

# 2025

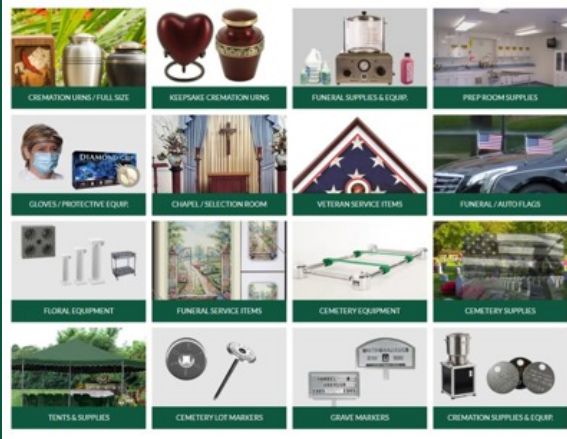
12042024



# Lynch Supply Company

## Cemetery Equipment & Supplies

[www.lynchsupply.com](http://www.lynchsupply.com) [info@lynchsupply.com](mailto:info@lynchsupply.com)



Service • Your Profession • Our Promise  
**LYNCH SUPPLY CO.**  
Since 1932

Lynch Supply Company, Inc.

## Lynch Supply Company

### Introduction

#### "SERVICE YOUR PROFESSION OUR PROMISE"

Founded in 1932, Lynch Supply Company, Inc. has earned a reputation for being a leader in the funeral and cemetery supply fields. At Lynch, you will find same-day shipping, knowledgeable and friendly customer care experts, and a 91-year commitment to you and the families you serve. Lynch Supply remains one of the oldest, family owned and independent suppliers to the funeral & cemetery professions today & has been on the world wide web for over 15 years. Located just 40 minutes southeast of Tulsa, our strong small town work ethic assures you of people who really care.

We carry the products and give you the service you require. We provide sales & service for items you need and use on a daily basis. Products for the Chapel & Selection Room, Embalming Fluids & Sundries, Floral Equipment & Supplies, Funeral Service Items, Infant Caskets, Prep Room Equipment & Supplies, Removal Equipment, Cremation Urns & Supplies and thousands of more.

Lynch Supply is also an Authorized Warranty and Repair Facility for both Duotronic and Portiboy machines. We carry and service the complete line of Duotronic and Portiboy embalming machines.

Having a web store for over 15 years, we understand the importance of providing our web customers with a shopping experience that is second to none. Thousands of the most sought-after products, fair pricing, same day shipping, and the most secure payment options to guarantee you a seamless and hassle-free shopping experience.

**Lynch Supply Company, Inc.**  
**455 N. Cherokee Street, Muskogee, OK 74403**  
**info@lynchsupply.com www.lynchsupply.com**  
**800.777.3151**



# Cemetery Equipment & Supplies

## Table of Contents

	<b>Page</b>
<b>Cemetery Equipment</b>	<u>5</u>
<b>General Price List</b>	<u>4</u>
<b>Lot Markers</b>	<u>23</u>
<b>Lowering Devices, Drapes &amp; Cemetery Grass</b>	<u>7</u>
<b>Remembrance Lights &amp; Floral Vases</b>	<u>27</u>
<b>Temporary Grave Markers &amp; Memorial Flags</b>	<u>29</u>
<b>Tents and Tent Accessories</b>	<u>17</u>



# Lynch Supply CO.

## Cemetery Equipment & Supplies

### Catalog Price List - 2025

455 N. Cherokee Street  
Muskogee, OK, 74403  
800.777.3151

www.lynchsupply.com  
info@lynchsupply.com

Name	Product Code	Price	Catalog Page
AEON CASKET CARRIAGE	CAC1000	4,150.00	<a href="#">11</a>
AEON CASKET CARRIAGE PNEUMATIC REPLACEMENT TIRES	CAC1250-P	75.00	<a href="#">12</a>
AEON CASKET CARRIAGE PROTECTIVE COVER	CAC3300	340.00	<a href="#">12</a>
AEON CASKET CARRIAGE STANDARD HARD RUBBER TIRES	CAC1200	67.90	<a href="#">12</a>
ALUMINUM GRAVE BOARDS-14" WIDTH	GRAB14S	392.00	<a href="#">16</a>
ALUMINUM GRAVE BOARDS-21" WIDTH	GRAB21S	392.00	<a href="#">16</a>
CASKET PLACER & LOWERING DEVICE END STOP ASSEMBLY	LOWP3511	164.15	<a href="#">16</a>
CAST ALUMINUM LOT MARKERS-3" ROUND WITH 3-SPLINE STAKE	LOTLS03	10.35	<a href="#">30</a>
CAST ALUMINUM LOT MARKERS-4" ROUND WITH 3-SPLINE STAKE	LOTLS04	11.95	<a href="#">30</a>
CAST ALUMINUM LOT MARKERS-4" ROUND WITH 8" STEEL SPIKE	LOTLS04-E	11.10	<a href="#">31</a>
CAST ALUMINUM LOT MARKERS-5" SQUARE	LOTLS05	16.05	<a href="#">31</a>
CAST ALUMINUM MARKER NUMBERS & LETTERS FOR LOT MARKERS	LOTLS0600	0.29	<a href="#">30</a>
CAST ALUMINUM NAME PLATES FOR AEON CASKET CARRIAGE	CASC33CCNP	475.00	<a href="#">12</a>
CEMETERY CHAIR COVERS	CHC500S	51.00	<a href="#">28</a>



Lynch Supply Company, Inc.

Name	Product Code	Price	Catalog Page
CEMETERY FINDER PROBES	FIND595S	71.75	<a href="#">16</a>
CEMETERY LAP BLANKET	LAP1600	233.35	<a href="#">28</a>
CEMETERY SPEARHEAD U.S. FLAGS-DELUXE SEWN	FLS105S	119.52	<a href="#">35</a>
CEMETERY SPEARHEAD U.S. FLAGS-ECONOMY	FLS106S	105.12	<a href="#">35</a>
CEMETERY TENT POLE REGISTER	REGPT599	255.00	<a href="#">20</a>
CFS 15 X 15 HILLSIDE TENT WITH ALUMINUM FRAME & ACRYLIC TOP	TENCFS-1502	3,565.00	<a href="#">23</a>
CFS 15 X 15 HILLSIDE TENT WITH GALVANIZED STEEL FRAME & ACRYLIC TOP	TENCFS-1500	3,295.00	<a href="#">23</a>
CFS 15 X 20 HILLSIDE TENT WITH ALUMINUM FRAME & ACRYLIC TOP	TENCFS-1522	4,785.00	<a href="#">23</a>
CFS 15 X 20 HILLSIDE TENT WITH GALVANIZED STEEL FRAME & ACRYLIC TOP	TENCFS-1520	4,395.00	<a href="#">23</a>
CFS HILLSIDE ACRYLIC REPLACEMENT TENT TOPS ONLY	TENCFS-1504	1,725.00	<a href="#">23</a>
CFS HILLSIDE ALUMINUM REPLACEMENT TENT FRAMES	TENCFS-1507	1,840.00	<a href="#">24</a>
CFS HILLSIDE GALVANIZED STEEL REPLACEMENT TENT FRAMES	TENCFS-1506	1,575.00	<a href="#">24</a>
CFS STRAIGHT TENT WALL-ACRYLIC	TENCFS-800	499.00	<a href="#">26</a>
CFS SUN EXTENSION COMPLETE SETS	TENCFS-702	1,675.00	<a href="#">26</a>
CFS SUN EXTENSION FRAMES ONLY	TENCFS-706	775.00	<a href="#">26</a>
CFS SUN EXTENSION TOP ONLY	TENCFS-704	870.00	<a href="#">25</a>
CFS WALLS TO FORM TENT AWNING COMPLETE	TENCFS-804	762.00	<a href="#">25</a>
CHAIR BAGS WITH INDIVIDUAL COMPARTMENTS	CHBB104S	43.25	<a href="#">28</a>

Lynch Supply Company, Inc.

Name	Product Code	Price	Catalog Page
CHAIR COVER STORAGE BAG W/DRAWSTRING	CHC400	58.35	<a href="#">28</a>
COCOA MATTING FOR THE GRAVESIDE	COM420S	2.35	<a href="#">19</a>
CRANKS FOR FRIGID LOWERING DEVICES	CRANK300S	39.00	<a href="#">16</a>
DELUXE PORTABLE FOLDING REGISTER STAND WITH HARDWOOD TOP	REGPXL3310S	446.00	<a href="#">20</a>
E-Z CASKET PLACER ROLLER BARS-ALUMINUM	PLC3008S	850.00	<a href="#">15</a>
EATON STEEL CASKA-ROL CASKET PLACER ROLLER BARS	PLC400	1,064.00	<a href="#">15</a>
ECONOMY LOWERING DEVICE STAND	LOWST300S	615.00	<a href="#">14</a>
EMKAY DEVOTIONAL CANDLES IN UNBREAKABLE CRYSTAL	CAN789S	176.50	<a href="#">33</a>
EMKAY REFILL CANDLES FOR REMEMBRANCE LIGHTS	CAN797	153.20	<a href="#">33</a>
EXTRA LONG CASKET KEY CRANK	CRANK600	17.97	<a href="#">16</a>
FOLDING PORTABLE REGISTER STANDS WITH LAMINATE TOPS	REGPXL2311S	298.00	<a href="#">20</a>
FRIGID 3-N-1 IMPERIAL LOWERING DEVICE SET -CEMETERY MODEL	LOWID5504S	8,599.65	<a href="#">13</a>
FRIGID 3-N-1 MASTER LOWERING DEVICE SET -CEMETERY MODEL	LOWMD4902S	10,026.98	<a href="#">13</a>
FRIGID IMPERIAL LOWERING DEVICE WITH PLACERS-CEMETERY MODEL	LOWID5502SP	6,422.98	<a href="#">14</a>
FRIGID IMPERIAL LOWERING DEVICE WITHOUT PLACERS-CEMETERY MODEL	LOWID5502SK	4,638.82	<a href="#">14</a>
FRIGID MASTER LOWERING DEVICE WITH PLACERS-CEMETERY MODEL	LOWMD4901SP	7,850.30	<a href="#">13</a>
FRIGID MASTER LOWERING DEVICE WITHOUT PLACERS-CEMETERY MODEL	LOWMD4901SK	6,066.14	<a href="#">13</a>
FRIGID OVERSIZED 3-N-1 MASTER LOWERING DEVICE SET -CEMETERY MODEL	LOWMD4002-R	10,954.74	<a href="#">13</a>

Lynch Supply Company, Inc.

Name	Product Code	Price	Catalog Page
FRIGID OVERSIZED MASTER LOWERING DEVICE WITH PLACERS -CEMETERY MODEL	LOWMD4000-P	8,778.07	<a href="#">13</a>
FRIGID OVERSIZED MASTER LOWERING DEVICE WITHOUT PLACERS -CEMETERY MODEL	LOWMD4000S	6,993.91	<a href="#">14</a>
FRIGID PALLBEARER CASKET CARRIAGE	PALL1400S	3,481.00	<a href="#">11</a>
FRIGID STAINLESS STEEL LOWERING DEVICE STANDS	LOWST1011-S	1,855.53	<a href="#">14</a>
FRIGID STREAMLINER MOBILE STAND & CASKET CARRIER	STRM614S	4,274.85	<a href="#">12</a>
GREEN FLUTED PLASTIC CEMETERY CONE VASES	VASE5011	41.40	<a href="#">34</a>
HAND LOWERING HAND STRAPS	STRH300S	30.75	<a href="#">17</a>
INDIVIDUAL DIES FOR MARKING MACHINE-LETTERS 3 1/2"	LOTMP31-DL	33.75	<a href="#">29</a>
INDIVIDUAL DIES FOR MARKING MACHINE-LETTERS 4 1/2"	LOTMP41-DL	37.75	<a href="#">29</a>
INDIVIDUAL DIES FOR MARKING MACHINE-NUMBERS 3 1/2"	LOTMP31-DN	33.75	<a href="#">29</a>
INDIVIDUAL DIES FOR MARKING MACHINE-NUMBERS 4 1/2"	LOTMP41-DN	37.75	<a href="#">29</a>
INFANT & URN LOWERING DEVICE SET	LOWIDINF	5,637.95	<a href="#">14</a>
LIFETIME CEMETERY FLUSH IN-GROUND FLOWER VASES	VAS4600S	103.90	<a href="#">34</a>
LOWERING DEVICE END ROLLER ASSEMBLY	LOWP3508S	321.15	<a href="#">15</a>
LOWERING DEVICE PLASTIC PROTECTIVE HEAD COVERS FOR IMPERIAL DEVICE	LOWP3595	148.30	<a href="#">15</a>
LOWERING DEVICE PLASTIC PROTECTIVE HEAD COVERS FOR MASTER DEVICE	LOWP3596	157.40	<a href="#">15</a>
LOWERING DEVICE SAFETY CHAINS	SAF491800S	98.70	<a href="#">17</a>
LOWERING DEVICE SAFETY STRAPS	SAF41200S	80.00	<a href="#">17</a>

Lynch Supply Company, Inc.

Name	Product Code	Price	Catalog Page
LOWERING DEVICE STRAPS	STR300S	78.00	<a href="#">17</a>
MAUSOLEUM TRAYS-ECONOMY WEIGHT (PACK OF 6)	MAU600-6	249.30	<a href="#">32</a>
MAUSOLEUM TRAYS-STANDARD WEIGHT (PACK OF 6)	MAU601-6	295.50	<a href="#">32</a>
MCNEILL #700 ALUMINUM GRAVE MARKERS	GRMK700	270.00	<a href="#">35</a>
MCNEILL #900 ALUMINUM GRAVE MARKERS	GRMK900	312.00	<a href="#">35</a>
MCNEILL #C166 CAST CHROME GRAVE MARKERS	GRMKC166	576.00	<a href="#">35</a>
MCNEILL #G50 CAST GOLD GRAVE MARKERS	GRMKCG50	561.00	<a href="#">36</a>
MCNEILL #S49 CAST SILVER GRAVE MARKERS	GRMKCS49	561.00	<a href="#">36</a>
MCNEILL SISTO ALUMINUM GRAVE MARKERS	GRMKSISTO	249.40	<a href="#">36</a>
MOUND COVER-ALCOVE STYLE COMPLETE	TENCFSP-904	1,067.00	<a href="#">25</a>
MOUND COVER-BOX STYLE COMPLETE	TENCFS-902	998.00	<a href="#">27</a>
MOUND COVER-SLANTED STYLE COMPLETE	TENCFS-900	956.00	<a href="#">27</a>
PERMA-MARK COMPLETE SET OF ALPHA MARKING DIES	LOTMP35S	551.00	<a href="#">29</a>
PERMA-MARK COMPLETE SET OF NUMERIC DIES	LOTMP32-SET	253.75	<a href="#">29</a>
PERMA-MARK MARKING CHARGE -PER MARKER	LOTMP52	0.22	<a href="#">30</a>
PERMA-MARK NUMBERING MACHINES	LOTMP31-	893.00	<a href="#">30</a>
PERMA-MARK NUMBERS/LETTERS/CROSS MARKS ADDED	LOTMP50	0.25	<a href="#">30</a>
PERMA-MARK STAINLESS STEEL LOT MARKER WITHOUT PIN-3 1/2" DIAMETER	LOTMP3-MO	4.40	<a href="#">31</a>

Lynch Supply Company, Inc.

Name	Product Code	Price	Catalog Page
PERMA-MARK STAINLESS STEEL LOT MARKER WITHOUT PIN-4 1/2" DIAMETER	LOTMP4-MO	5.39	<a href="#">31</a>
PERMA-MARK STAINLESS STEEL LOT MARKERS-3 1/2" DIAMETER	LOTMP3	7.40	<a href="#">31</a>
PERMA-MARK STAINLESS STEEL LOT MARKERS-4 1/2" DIAMETER	LOTMP4	8.35	<a href="#">31</a>
PORTABLE PEDESTAL REGISTER STAND WITH ADJUSTABLE TRIPOD BASE	REGPXL2011S	279.00	<a href="#">21</a>
PORTABLE PEDESTAL REGISTER STAND WITH NON-ADJUSTABLE TRIPOD BASE	REGPXL2111S	273.00	<a href="#">21</a>
PORTABLE REGISTER STAND REPLACEMENT FEET	REGPXL3745	1.10	<a href="#">21</a>
POW-MIA SPEARHEAD FLAGS	FLS862S	60.00	<a href="#">35</a>
REMEMBRANCE LIGHTS	CAN1001S	125.60	<a href="#">33</a>
REX CEMETERY FLUSH IN-GROUND FLOWER VASES	VAS4500S	56.97	<a href="#">34</a>
ROYAL CEMETERY GRASS COMPLETE SET	GRASR-S	1,246.70	<a href="#">17</a>
ROYAL CEMETERY GRASS MOUND COVER	GRASR-M	672.00	<a href="#">17</a>
ROYAL CEMETERY GRASS T SET WITH SIDE PIECES	GRASR-TS	596.00	<a href="#">18</a>
ROYAL WILBERT WAY CEMETERY GRASS SET	GRASR-W	918.70	<a href="#">18</a>
STAKE FLAGS 2 1/2" X 3 1/2" 21"	FLAGS21	46.20	<a href="#">32</a>
TENT BAG-HEAVY DUTY NATURAL CANVAS DUCK	TENB-1987	84.90	<a href="#">24</a>
TENT BAG-NATURAL CANVAS DUCK	TENB-1945	39.85	<a href="#">24</a>
TUF-TURF PREMIUM CEMETERY GRASS "T" AND SIDE PIECE SET	GRASTT-8	453.85	<a href="#">18</a>
TUF-TURF PREMIUM CEMETERY GRASS MOUND COVER	GRASTT-2M	398.50	<a href="#">18</a>



Lynch Supply Company, Inc.

Name	Product Code	Price	Catalog Page
TUF-TURF PREMIUM CEMETERY GRASS "T" SET ONLY	GRSTT-3	210.40	<a href="#"><u>18</u></a>
TUF-TURF PREMIUM CEMETERY GRASS COMPLETE SET	GRSTT-6	852.35	<a href="#"><u>18</u></a>
TUF-TURF WILBERT WAY PREMIUM CEMETERY GRASS SET	GRSTT-4	820.00	<a href="#"><u>19</u></a>
W.F. NORMAN #100 CROWN STRAIGHT ALUMINUM GRAVE MARKERS	GRMK100AS	165.50	<a href="#"><u>36</u></a>
W.F. NORMAN #101 CROWN TILTED ALUMINUM GRAVE MARKERS	GRMK101A	165.50	<a href="#"><u>36</u></a>
W.F. NORMAN #109 SURFACE ALUMINUM GRAVE MARKERS	GRMK109AS	165.50	<a href="#"><u>36</u></a>
WINDBUSTER 68" UMBRELLA	UMB401S	47.50	<a href="#"><u>22</u></a>
WINDY 391 WINDPROOF UMBRELLA-BLACK	UMB391	32.50	<a href="#"><u>22</u></a>
WRAP AROUND DRAPES FOR LOWERING DEVICES	DRL100S	247.00	<a href="#"><u>15</u></a>

### CAC1000

#### AEON CASKET CARRIAGE

##### "OPTIONS AVAILABLE"



The standard of the profession for decades. Quality materials, excellent craftsmanship and exclusive features make it the top choice. Standard 2.75" x 10" Diameter Hard Rubber Tires insure soft and smooth operation over rough terrain. Front wheels swivel to allow easy towing. Optional 4" x 10" Pneumatic Tires are available. Optional Cast Aluminum Name Plates with raised letters are sold in pairs and add valuable name recognition. Weight tested to hold up to 800 lbs.

24" W x 24" H x 72" L. Weight 200 lbs. One Year Warranty. **Please allow 30-45 Days**

### PALL1400S

#### FRIGID PALLBEARER CASKET CARRIAGE



This is your best means of providing pallbearers with a dependable method of moving the casket from hearse to graveside without incident or mishap. Built with traditional Frigid quality, our Pallbearer Casket Carriage has a heavy-duty frame of 1.5" 14 gauge welded steel tubing and extra-large 12" fully pneumatic wheels. Front 2 Wheels Swivel for easy when moving.

Drapes conveniently snap in place using the integrated grommets on the frame. The grommets can be seen on the frame tubing in the picture below. Please allow 6-8 weeks. One Year Warranty.



**CASC33CCNP**

**CAST ALUMINUM NAME PLATES FOR  
AEON CASKET CARRIAGE**

**"OPTIONS AVAILABLE"**

Matching Green Background with your firm's name  
in raised letters. Removable. Sold in Pairs.



**STRM614S**

**FRIGID STREAMLINER MOBILE  
STAND & CASKET CARRIER**

**"OPTIONS AVAILABLE"**

The Streamliner is designed to work with casket lowering devices and placers to give you a completely safe and mobile graveside set-up. The Streamliner enables your set-up, including drape, device and placer set, to remain intact before, during and between burials. Sturdy, 14" Pneumatic tires move the Streamliner throughout the cemetery with ease, and the tow bar is removable, allowing for two or more units to be coupled



**CAC3300**

**AEON CASKET CARRIAGE  
PROTECTIVE COVER**

Keep your casket carriage protected from the  
elements and damages.



**CAC1200**

**AEON CASKET CARRIAGE  
STANDARD HARD RUBBER  
TIRES**

Durable, Heavy Duty Green Canvas  
construction.



**CAC1250-P**

**AEON CASKET CARRIAGE PNEUMATIC REPLACEMENT  
TIRES**

Larger Pneumatic Replacement Wheel & Tire 4" x 10" Diameter. Soften the ride of the Aeon Casket Carriage with 4" pneumatic tire. Excellent for use for running over curbs, sprinklers and flush markers Wide tread also eases movement of carriage in wet or water saturated turf.

## Cemetery Equipment & Supplies



**LOWID5504S**  
**FRIGID 3-N-1 IMPERIAL LOWERING DEVICE SET - CEMETERY MODEL**  
**"OPTIONS AVAILABLE"**

Designed For One Or Two Person Setup. Adjustable friction braking system.  
 Optional telescopic stand for hillside set-ups.  
 800 pound capacity.  
 One -piece wrap around drape and stainless steel crank included.  
 Comes with set of 20' green nylon device straps for 8' depth graves.  
**\*\*Please allow 14-16 Weeks\*\***



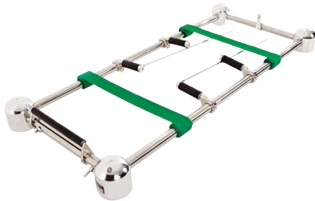
**LOWMD4902S**  
**FRIGID 3-N-1 MASTER LOWERING DEVICE SET - CEMETERY MODEL**  
**"OPTIONS AVAILABLE"**

Designed for two person setup. Ideal for lowering a casket and fiberglass vault combo. 1000 1000 pound capacity.  
 Optional telescopic stand for hillside set-ups.  
 One-piece wrap around drape and stainless steel crank included.  
**COMES WITH SET OF 20' GREEN NYLON DEVICE STRAPS FOR 8' DEPTH GRAVES.**  
**\*\*Please allow 10-12 weeks\*\***



**LOWMD4002-R**  
**FRIGID OVERSIZED 3-N-1 MASTER LOWERING DEVICE SET -CEMETERY MODEL**  
**"OPTIONS AVAILABLE"**

Designed for two person setup. 6" wider than the standard Master device ideal for lowering a casket and fiberglass vault combo. 1000 pound capacity.  
 Optional telescopic stand for hillside set-ups.  
 One-piece wrap around drape and stainless steel crank included.  
**COMES WITH SET OF 20' GREEN NYLON DEVICE STRAPS FOR 8' DEPTH GRAVES.**  
**\*\*Please allow 14-16 weeks\*\***



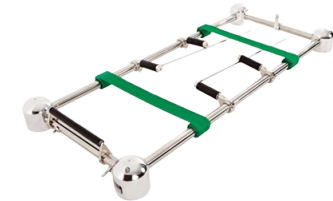
**LOWMD4901SP**  
**FRIGID MASTER LOWERING DEVICE WITH PLACERS-CEMETERY MODEL**  
**"OPTIONS AVAILABLE"**

This is a high-grade lowering device. The load bearing components of the Master are twice the size of those found in the Imperial device making it virtually maintenance free. It is an ideal choice for lowering a casket and fiberglass vault combo. Weighing 130 pounds plain, the Master is the most durable lowering device on the market and is designed for a two-person setup. **COMES WITH 20' GREEN NYLON DEVICE STRAPS FOR 8' GRAVES.****\*\*Please allow 14-16 Weeks\*\***



**LOWMD4901SK**  
**FRIGID MASTER LOWERING DEVICE WITHOUT PLACERS-CEMETERY MODEL**  
**"OPTIONS AVAILABLE"**

This is a high-grade lowering device. The load bearing components of the Master are twice the size of those found in the Imperial device making it virtually maintenance free. It is an ideal choice for lowering a casket and fiberglass vault. The Master is the most durable lowering device on the market and is designed for a two-person setup. **COMES WITH 20' GREEN NYLON DEVICE STRAPS FOR 8' GRAVES.****\*\*Please allow 14-16 Weeks\*\***



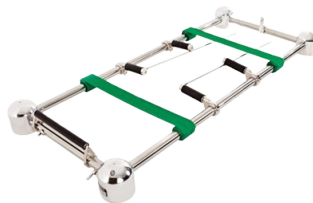
**LOWMD4000-P**  
**FRIGID OVERSIZED MASTER LOWERING DEVICE WITH PLACERS -CEMETERY MODEL**  
**"OPTIONS AVAILABLE"**

This is the most durable lowering device on the market. The load bearing components of the Master are twice the size of those found in the Imperial device making it virtually maintenance free. It is an ideal choice for lowering a casket and fiberglass vault combo. **COMES WITH SET OF 20' GREEN NYLON DEVICE STRAPS FOR 8' DEPTH GRAVES.**  
**\*\*Please allow 14-16 Weeks\*\***



**LOWID5502SK**  
**FRIGID IMPERIAL LOWERING DEVICE WITHOUT**  
**PLACERS-CEMETERY MODEL**  
**"OPTIONS AVAILABLE"**

A favorite among customers because of its quality of construction and its assurance of performance. As a medium-grade device, the Imperial is capable of bearing loads up to 800 pounds. The Imperial features an adjustable braking system giving you added control over the lowering speed. Weighing 110 pounds plain, the Imperial is designed for a one or two-person setup. COMES WITH SET OF 20' GREEN NYLON DEVICE STRAPS FOR 8' DEPTH GRAVES.



**LOWID5502SP**  
**FRIGID IMPERIAL LOWERING DEVICE WITH**  
**PLACERS-CEMETERY MODEL**  
**"OPTIONS AVAILABLE"**

A favorite among customers because of its quality of construction and its assurance of performance. As a medium-grade device, the Imperial is capable of bearing loads up to 800 pounds. The Imperial features an adjustable braking system giving control over the lowering speed. Weighing 110 pounds plain. COMES WITH SET OF 20' GREEN NYLON DEVICE STRAPS FOR 8' DEPTH GRAVES. \*\*Please allow 14-16 Weeks\*\*



**LOWMD4000S**  
**FRIGID OVERSIZED MASTER LOWERING DEVICE**  
**WITHOUT PLACERS -CEMETERY MODEL**  
**"OPTIONS AVAILABLE"**

The load bearing components of the Master are twice the size of those found in the Imperial device making it virtually maintenance free. With a 1000 pound weight capacity, it is an ideal choice for lowering a casket and fiberglass vault combo. Frigid Fluid Co. manufactures two types of Master casket lowering device: the original Master & the Oversize Master. COMES WITH SET OF 20' GREEN NYLON DEVICE STRAPS FOR 8' GRAVES. \*\*Please allow 8-12 weeks\*\*



**LOWST1011-S**  
**FRIGID STAINLESS STEEL LOWERING DEVICE**  
**STANDS**  
**"OPTIONS AVAILABLE"**

Stands are available in two models: Regular or Telescoping. The Regular model stands 14" high while the Telescoping model is fully adjustable. Designed to cope with a hillside setup, one end of the Telescoping stand adjusts from 10" - 18" while the other end adjusts from 14" - 26". The corner post tubing on our stands are made with polished stainless steel. All other tubing on our stands are made from polished aluminum.



**LOWST300S**  
**ECONOMY LOWERING DEVICE STAND**  
**"OPTIONS AVAILABLE"**

Designed to fit any lowering device. Constructed of Grey Galvanized Steel with adjustable width. Standard Non-Telescoping and Telescoping Model for hillside set-ups. Shipping includes crating charge.



**LOWIDINF**  
**INFANT & URN LOWERING DEVICE SET**  
**"OPTIONS AVAILABLE"**

3-N-1 Set-Up For Infant And Cremation Memorial Services  
 One-Piece Wrap Around style drape, Board, Stand, Placer and Crank Included.  
 COMES WITH SET OF 20' GREEN NYLON DEVICE STRAPS FOR 8' DEPTH GRAVES.  
 \*\*Please allow 10-12 weeks\*\*  
 \*\*\*RUSH PRODUCTION AVAILABLE- 7-10 DAYS\*\*\*



## Cemetery Equipment & Supplies



**PLC3008S**  
**E-Z CASKET PLACER ROLLER BARS-ALUMINUM**  
**"OPTIONS AVAILABLE"**

Placer consists of a set of three bars fabricated from heavy aluminum channel, assuring you of years of trouble-free service. Each bar has two 10" rubber rollers to allow any size casket to roll smoothly and without drag. One bar comes with a Brake Attachment to lock the casket into the desired position during the ceremony. The E-Z Casket Roller Bars will fit on any device up to 39" between rails. Weight 51 lbs.



**DRL100S**  
**WRAP AROUND DRAPES FOR LOWERING**  
**DEVICES**  
**"OPTIONS AVAILABLE"**

Premium Hy-Lustre Acrylic or Nylon Supreme Crushed Velvet. One-Piece, wrap around drape that covers the corners and easily attaches with Velcro straps. Built-In Spring that keeps the drape secure and tailored. Beautiful, durable and machine washable.



**PLC400**  
**EATON STEEL CASKA-ROL CASKET PLACER**  
**ROLLER BARS**  
**"OPTIONS AVAILABLE"**

Caska-Rol Placer consists of a set of three bars fabricated from steel assuring you of years of trouble-free service. Each bar has two 10" rubber rollers to allow any size casket to roll smoothly and without drag. One bar comes with a Brake Attachment to lock the casket into the desired position during the ceremony. The Casket Roller Bars will fit on any device up to 39" between rails.



**LOWP3595**  
**LOWERING DEVICE PLASTIC PROTECTIVE HEAD**  
**COVERS FOR IMPERIAL DEVICE**

The perfect product to keep your Frigid Imperial lowering device looking like new! Constructed of sturdy black plastic and green canvas. These Head Covers fit snugly over the corner heads to protect against scratches and wear. Sold in sets of 4.



**LOWP3508S**  
**LOWERING DEVICE END ROLLER ASSEMBLY**  
**"OPTIONS AVAILABLE"**

Add to any Frigid Lowering Device for easier casket placement. Included on casket placers but can also be added to any stand-alone Frigid lowering devices. **\*\*Must order Shim Kit for New Installations\*\***



**LOWP3596**  
**LOWERING DEVICE PLASTIC PROTECTIVE HEAD**  
**COVERS FOR MASTER DEVICE**

The perfect product to keep your Frigid Master lowering device looking like new! Constructed of sturdy black plastic and green canvas. These Head Covers fit snugly over the corner heads to protect against scratches and wear. Sold in sets of 4.



**LOWP3511  
CASKET PLACER & LOWERING DEVICE END STOP  
ASSEMBLY**

End Stop Clamp with stopper.  
For existing Frigid Casket Placers and Lowering  
Devices.



**GRAB14S  
ALUMINUM GRAVE BOARDS-14" WIDTH  
"OPTIONS AVAILABLE"**

14" Wide Channel Style Aluminum Grave Boards  
Provides safe and secure graveside support for  
pallbearers and equipment.  
Constructed of strong and lightweight aluminum.  
Available in 5' and 10' Lengths.  
Made in the U.S.A.



**GRAB21S  
ALUMINUM GRAVE BOARDS-21" WIDTH  
"OPTIONS AVAILABLE"**

21" Wide Channel Style Aluminum Grave Boards  
Provides safe and secure graveside support for  
pallbearers and equipment.  
Constructed of strong and lightweight aluminum.  
Available in 5' and 10' Lengths.  
Made in the U.S.A.



**FIND595S  
CEMETERY FINDER PROBES  
"OPTIONS AVAILABLE"**

Finder Probes are the perfect way to "probe" and locate  
underground grave sites and vaults.  
Constructed using high quality 3/8" diameter stainless  
steel with built-in sharp tip.  
Available in 3', 4' and 4.5" lengths.



**CRANK300S  
CRANKS FOR FRIGID LOWERING DEVICES  
"OPTIONS AVAILABLE"**

For all Frigid Lowering Devices.  
Durable Stainless Steel, Cast Bronze or Bronze with  
Swivel Wood Handle.



**CRANK600  
EXTRA LONG CASKET KEY CRANK**

Hard to Find 12" long key cranks for caskets. Additional  
length key for adjusting all adjustable casket beds.  
Provides a convenient way to get behind pillows and  
mattresses. Plastic handle.

## Cemetery Equipment & Supplies



**STRH300S**  
**HAND LOWERING HAND STRAPS**  
**"OPTIONS AVAILABLE"**

Choose from 3-Ply Cotton, Corded Nylon or Black Nylon. All with metal tips or looped ends. Sold in Pairs.



**SAF41200S**  
**LOWERING DEVICE SAFETY STRAPS**  
**"OPTIONS AVAILABLE"**

Made from super-strong, green 4-ply poly webbing. Rubber covered, cadmium plated steel hooks. Our safety straps provide extra precaution against the casket dropping. Provides peace of mind and confidence.



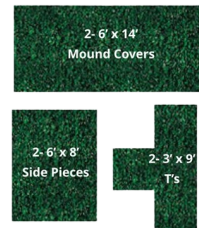
**STR300S**  
**LOWERING DEVICE STRAPS**  
**"OPTIONS AVAILABLE"**

Constructed of Soft, Pliable 4-Ply Green Nylon Webbing. 4" Width Heat Sealed Nylon Webbing. Reinforced Straps have 4' of additional reinforcing in center of strap. Fits all lowering devices. Blue and Black available. Long straps sold in pairs.



**SAF491800S**  
**LOWERING DEVICE SAFETY CHAINS**  
**"OPTIONS AVAILABLE"**

Attractive, cadmium plated steel hooks and chain. Rubber covering on hooks prevents scratching the device. Each pair of chains comes in an attractive carrying pouch. Sold in pairs.



**GRASR-S**  
**ROYAL CEMETERY GRASS COMPLETE SET**

Royal Grass is our best quality grass. Outdoor and indoor use and made entirely of polypropylene fibers! Color guaranteed for one year. Heavy Uraloc is the finest backing in any grass set and each piece of grass set is complete surged. Grass is washable by water and backing will not crack or peel under normal use. Strong, tough binding keeps fibers from pulling out. Flexible, easy to handle and guaranteed not to fade, rot, mildew, absorb moisture or damage equipment. SET INCLUDES 2-6'X14' MOUND COVER, 2-6'X8' SIDES & 2-T'S.  
**\*\*IN STOCK\*\***



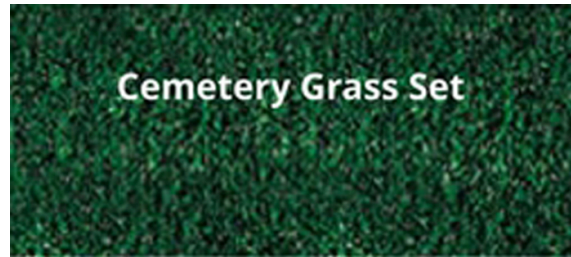
**GRASR-M**  
**ROYAL CEMETERY GRASS MOUND COVER**

Royal Grass is for outdoor and indoor use and made entirely of polypropylene fibers. Color guaranteed for one year. Heavy Uraloc Backing is the finest backing in any grass set and each piece of grass set is complete surged. Strong, tough binding keeps fibers from pulling out. Flexible, easy to handle and guaranteed not to fade, rot, mildew, absorb moisture or damage equipment. MOUND COVER SET CONSISTS OF 2 EA 6' X 14' PIECES FOR A 12' X 14' COVER.  
**\*\*\*Please allow 3-4 Weeks\*\*\***



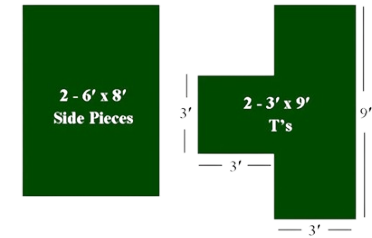
**GRASR-TS  
ROYAL CEMETERY GRASS T SET WITH SIDE  
PIECES**

Our Royal Grass is for outdoor and indoor use and made entirely of polypropylene fibers! Color guaranteed for one year. Heavy Uraloc is the finest backing in any grass set and each piece of grass set is complete surged. Will not crack or peel under normal use. Strong, tough binding keeps fibers from pulling out. Flexible, easy to handle and guaranteed not to fade, rot, mildew, absorb moisture or damage equipment. T-SET INCLUDES 2 EACH 3' X 9' PIECES & 2 6' X 8' SIDE PIECES.



**GRASR-W  
ROYAL WILBERT WAY CEMETERY GRASS SET**

Our Royal Grass is for outdoor and indoor use and made entirely of polypropylene fibers! Color guaranteed for one year. Heavy Uraloc is the finest backing in any grass set and each piece of grass set is complete surged. Strong, tough binding keeps fibers from pulling out. Flexible, easy to handle and guaranteed not to fade, rot, mildew, absorb moisture or damage equipment. SET INCLUDES 2 EACH 6' x 14' MOUND COVERS, 2-3' X 6' & 2-3' X 3' PIECES. Please allow 10-14 days.



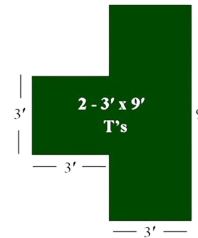
**GRASST-8  
TUF-TURF PREMIUM CEMETERY GRASS "T" AND  
SIDE PIECE SET**

Our Tuf-Turf Grass is for designed for outdoor use and made entirely of industry best polypropylene fibers. Tuf-Turf is constructed using Premium Urethane backing which is the finest available today. Flexible and easy to handle, Tuf-Turf is guaranteed not to fade, rot, mildew or absorb moisture. The set includes 2 each 3' x 9' "T" pieces and 2 each 6' x 8' side pieces.



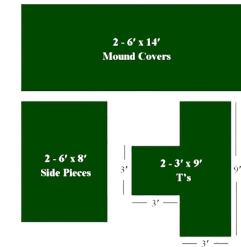
**GRASST-2M  
TUF-TURF PREMIUM CEMETERY GRASS MOUND  
COVER**

Our Tuf-Turf Grass is for designed for outdoor use and made entirely of industry best polypropylene fibers. Tuf-Turf is constructed using Premium Urethane backing which is the finest available today. Strong and tough, our surging keeps fibers from pulling out and is much more attractive. This Mound Set consists of 2 each 6' x 14' pieces making a standard 12' x 14' cover.



**GRASST-3  
TUF-TURF PREMIUM CEMETERY GRASS "T" SET  
ONLY**

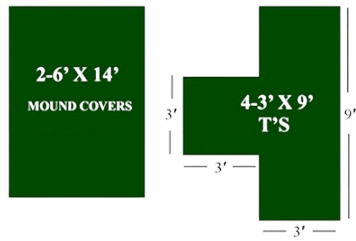
Our Tuf-Turf Grass is for designed for outdoor use and made entirely of industry best polypropylene fibers. Tuf-Turf is constructed using Premium Urethane backing which is the finest available today. All edges are completely Surged NOT sewn found with other grass. Strong and tough, our surging keeps fibers from pulling out and is much more attractive. The T-Set includes 2 each 3' x 9' pieces in a T shape.



**GRASST-6  
TUF-TURF PREMIUM CEMETERY GRASS  
COMPLETE SET**

The best cemetery grass available today. Our Tuf-Turf Grass is for designed for outdoor use and made entirely of industry best polypropylene fibers. Tuf-Turf is constructed using Premium Urethane backing which is the finest available today. Tuf-Turf is guaranteed not to fade, rot, mildew or absorb moisture. Complete set includes 2 each 6' x 14' Mound Cover, 2 each 6' x 8' Side pieces and 2 each 3' x 9' "T" pieces.

## Cemetery Equipment & Supplies



### GRATT-4 TUF-TURF WILBERT WAY PREMIUM CEMETERY GRASS SET

Our Tuf-Turf Grass is designed for outdoor use and made entirely of industry best polypropylene fibers. Tuf-Turf is constructed using Premium Urethane backing which is the finest available today. Strong and tough, our surging keeps fibers from pulling out and is much more attractive. This set includes 2 each 6' x 14' Mound Covers and 4 each 3' x 9' "T" pieces.



### COM420S COCOA MATTING FOR THE GRAVESIDE "OPTIONS AVAILABLE"

Cocoa matting is a sturdy, three shaft herringbone, reversible twill matting which is tightly woven to reduce the danger of slipping. Ideal to protect your lawns at the cemetery, year round hallway use in public buildings, on wet or greasy floors, stairs, walks or for private use. We recommend Sewn Jute Binding on each end which will prevent fraying and provide a finished look. Calculate the binding needed by the "width" ordered times 2 (1 for each end). PLEASE ORDER THE LENGTH NEEDED BY THE FOOT.





**REGPT599**  
**CEMETERY TENT POLE REGISTER**  
**\$255.00**



**REGPXL3310S**  
**DELUXE PORTABLE FOLDING REGISTER STAND**  
**WITH HARDWOOD TOP**  
**"OPTIONS AVAILABLE"**  
**\$446.00**



**REGPXL2311S**  
**FOLDING PORTABLE REGISTER STANDS WITH LAMINATE**  
**TOPS**  
**"OPTIONS AVAILABLE"**  
**\$298.00**





**REGPXL2111S**  
**PORTABLE PEDESTAL REGISTER STAND WITH NON-ADJUSTABLE  
TRIPOD BASE**

**"OPTIONS AVAILABLE"**  
**\$273.00**



**REGPXL2011S**  
**PORTABLE PEDESTAL REGISTER  
STAND WITH ADJUSTABLE TRIPOD  
BASE**

**"OPTIONS AVAILABLE"**  
**\$279.00**



**REGPXL3745**  
**PORTABLE REGISTER STAND  
REPLACEMENT FEET**

**\$1.10**

**Available Options**



## OUR FINEST UMBRELLA



UMB401S  
WINDBUSTER 68" UMBRELLA  
"OPTIONS AVAILABLE"  
\$47.50

UMB391  
WINDY 391 WINDPROOF UMBRELLA-BLACK  
\$32.50



**TENCFS-1500**

**CFS 15 X 15 HILLSIDE TENT WITH GALVANIZED STEEL FRAME & ACRYLIC TOP**

**"OPTIONS AVAILABLE"**

Complete Tent with Accessories & Tent Bag.  
Galvanized Steel Frame.  
Easy one-man setup.  
Includes one name on side of top at no charge.  
Additional Names available.  
Please allow 4-6 Weeks.



**TENCFS-1502**

**CFS 15 X 15 HILLSIDE TENT WITH ALUMINUM FRAME & ACRYLIC TOP**

**"OPTIONS AVAILABLE"**

## *CFS Hillside Tents & Accessories*

**TENCFS-1522**

**CFS 15 X 20 HILLSIDE TENT WITH ALUMINUM FRAME & ACRYLIC TOP**

**"OPTIONS AVAILABLE"**

Complete Tent with Accessories & Tent Bag.  
Durable, light & rust-proof aluminum frame.  
Easy One-Man Set Up.  
Includes one name on side of top at no charge.  
Additional Names available.  
Please allow 4-6 Weeks.

**TENCFS-1520**

**CFS 15 X 20 HILLSIDE TENT WITH GALVANIZED STEEL FRAME & ACRYLIC TOP**

**"OPTIONS AVAILABLE"**

**TENCFS-1504**

**CFS HILLSIDE ACRYLIC REPLACEMENT TENT TOPS ONLY**

**"OPTIONS AVAILABLE"**

Replacement Top Only  
Light-Weight, quick drying and fade resistant acrylic.  
Choose from many beautiful colors.  
Select Hooks and Straps or All Straps.  
Includes one name on side of top at no charge.  
Additional Names available.  
Please allow 4-6 Weeks.

### Tent Colors



## Steel or Aluminum



### TENCFS-1506

#### CFS HILLSIDE GALVANIZED STEEL REPLACEMENT TENT FRAMES

##### "OPTIONS AVAILABLE"

Galvanized Steel Frame Assembly For Hillside Tents  
Fixtures are constructed of galvanized cast steel.  
15' X 15' and 15' x 20' Frames.  
Please allow 4-6 Weeks.

### TENCFS-1507

#### CFS HILLSIDE ALUMINUM REPLACEMENT TENT FRAMES

##### "OPTIONS AVAILABLE"

### TENB-1945

#### TENT BAG-NATURAL CANVAS DUCK

Durable natural canvas duck construction.  
Protects tent tops and side walls against weather and dirt.

Drawstring Closure.

Ideal for 15' x 15' Tents.

3 1/2' D X 5 1/2' L. x 21" Diameter.



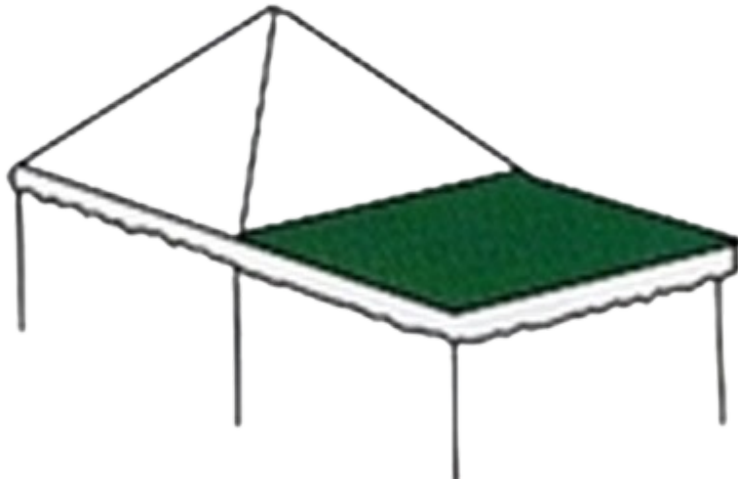
### TENB-1987

#### TENT BAG-HEAVY DUTY NATURAL CANVAS DUCK

Heavy Duty tent bag with reinforced carrying handles. Reinforced bottom for extra strength. Heavy weight natural canvas duck construction. For larger, heavier tents. Protects tent tops and side walls against weather and dirt. Ideal for tents larger than 15' x 15'. 4 1/2' D X 7' L x 27" Diameter.







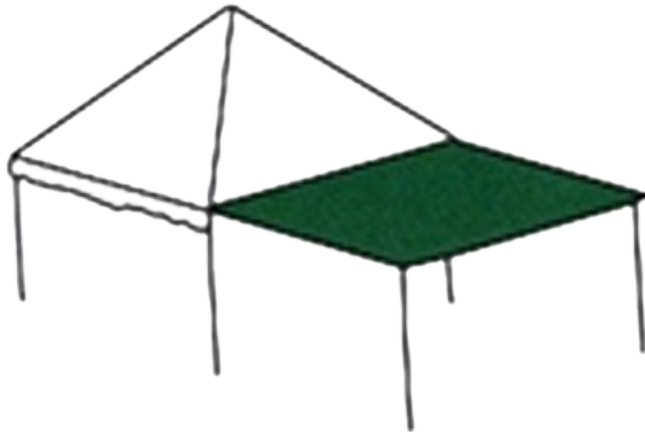
**TENCFS-704**

**CFS SUN EXTENSION TOP ONLY**

**"OPTIONS AVAILABLE"**

Top Only for 15 x 15 Sun Extension.  
Quick drying, fade resistant Sunbrella Acrylic  
Measures 8' x 15'  
\*Does NOT include frame\*  
Please allow 4-6 Weeks.

**Tent Colors**

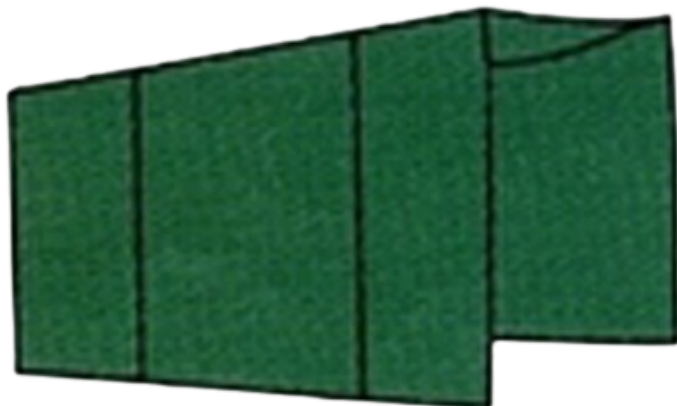


**TENCFS-804**

**CFS WALLS TO FORM TENT AWNING COMPLETE**

**"OPTIONS AVAILABLE"**

This Wall Creates An Awning For Additional Protection From The Elements  
Constructed of beautiful and durable Sunbrella Acrylic to match tent.  
Fits 15 X 15 Hillside tents.  
Includes 2 poles, 2 ropes and 4 stakes.  
Please allow 4-6 Weeks.



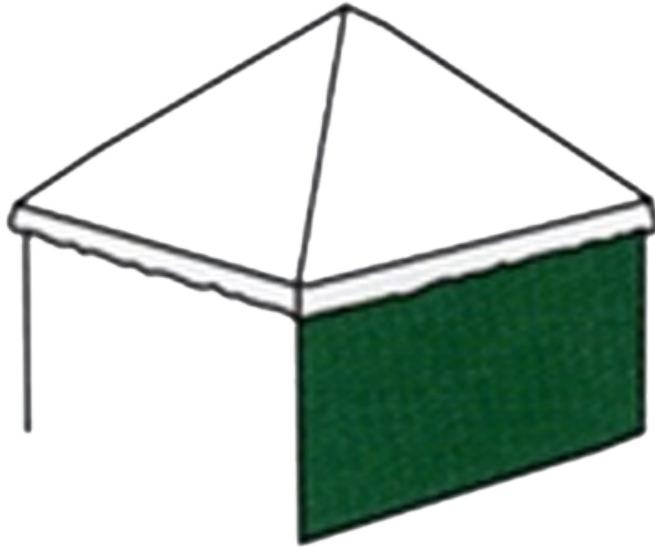
**TENCFS-904**

**MOUND COVER-ALCOVE STYLE COMPLETE**

**"OPTIONS AVAILABLE"**

The Largest Mound Cover Available.  
7' x 15'.  
Sunbrella Acrylic to match tent fabric.  
Enough room to hold 3 rows of chairs.  
Includes Poles, Stakes and Ropes.  
Please allow 4-6 Weeks.

## Protects family and set-up from wind, rain and sun exposure



### TENCFS-800

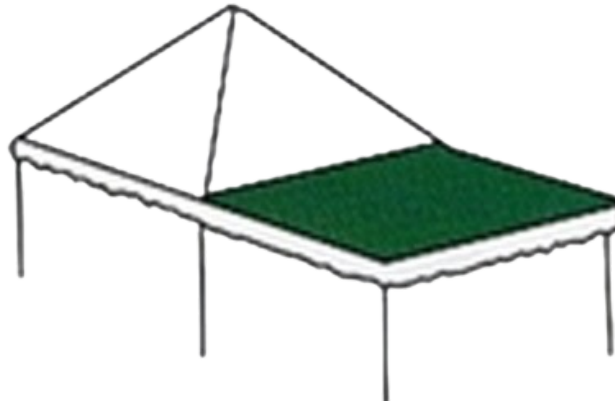
#### CFS STRAIGHT TENT WALL-ACRYLIC

#### "OPTIONS AVAILABLE"

Protects family and set-up from wind, rain and sun exposure.

Sunbrella Acrylic Fabric to match tent.

Please allow 4-6 Weeks.



### TENCFS-702

#### CFS SUN EXTENSION COMPLETE SETS

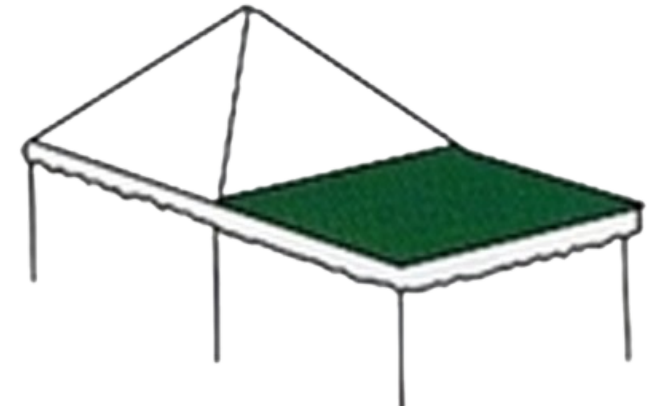
#### "OPTIONS AVAILABLE"

Attaches to 15' side of tent and provides an additional 8' x 15' of protection.

Features scalloped design to match the tent top. Frame connects to tent frame.

Please select steel or aluminum frame.

Please allow 4-6 Weeks.



### Tent Colors



### TENCFS-706

#### CFS SUN EXTENSION FRAMES ONLY

#### "OPTIONS AVAILABLE"

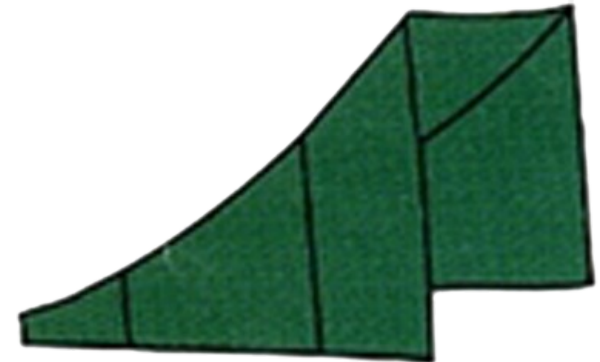
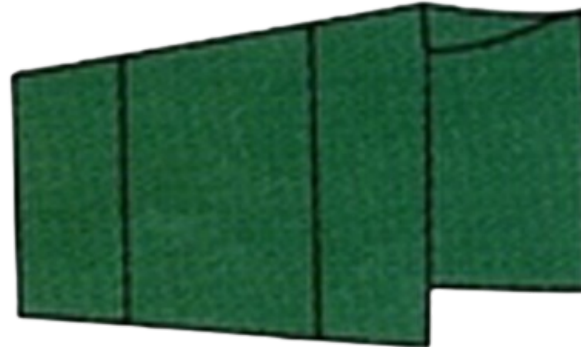
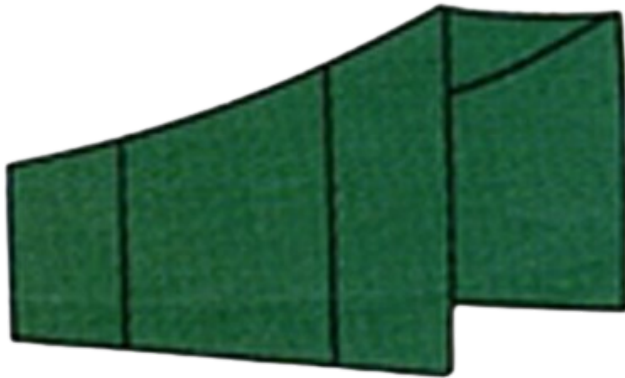
Complete Frame for Sun Extension Top.

Measures 8' x 15'

Please select Steel or Aluminum to match the tent frame.

Please allow 4-6 Weeks.

Tent Colors



**TENCFS-902**

**MOUND COVER-BOX STYLE  
COMPLETE**

**"OPTIONS AVAILABLE"**

This style is 3 ft in the back and can be used as an extension of the tent.  
Protects equipment and the dirt mound.  
Includes poles, stakes and ropes.  
Sunbrella Acrylic matches the tent top.  
7' x 15'.  
Please allow 4-6 Weeks.

**TENCFSP-904**

**MOUND COVER-ALCOVE STYLE  
COMPLETE**

**"OPTIONS AVAILABLE"**

The Largest Mound Cover Available.  
7' x 15'.  
Sunbrella Acrylic to match tent fabric.  
Enough room to hold 3 rows of chairs.  
Includes Poles, Stakes and Ropes.  
Please allow 4-6 Weeks.

**TENCFS-900**

**MOUND COVER-SLANTED STYLE  
COMPLETE**

**"OPTIONS AVAILABLE"**

Gently slopes from the opening back to the ground.  
Protects the lowering device, grass and flowers.  
Sunbrella Acrylic fabric to match the tent.  
Measures 7' x 15'.  
Please allow 4-6 Weeks.



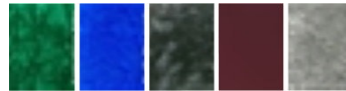
**LAP1600**

**CEMETERY LAP BLANKET**

**"OPTIONS AVAILABLE"**

Durable & Beautiful Lap Blanket Available in beautiful Nylon Supreme Crushed Velvet. Double Faced for added warmth. Large 4' x 8' Size. Available 1-Line of Monogramming or Initials is available for extra charge.

**Chair/Blanket Colors**



**CHC500S**

**CEMETERY CHAIR COVERS**

**"OPTIONS AVAILABLE"**

Durable & Beautiful Chair Covers. Nylon Supreme Crushed Velvet. Available 1-Line of Monogramming or Initials. Please specify if for Round or Square Backed Chairs.



**CHBB104S**

**CHAIR BAGS WITH INDIVIDUAL COMPARTMENTS**

**"OPTIONS AVAILABLE"**

Double bottom for added strength and durability. Each chair is fully enclosed to insure maximum protection. Easy closure partitions in bag. Strong sew-in carrying handle. Heavy Duty Polyester & Natural Canvas Cotton Blend.

**CHC400**

**CHAIR COVER STORAGE BAG W/DRAWSTRING**

Draw String bag for storing and transporting chair covers. Constructed from Durable Gray Weblon Material and Grommets.



## Cemetery Equipment & Supplies



### **LOTMP31-DL INDIVIDUAL DIES FOR MARKING MACHINE- LETTERS 3 1/2"**

Individual 3 1/2" Replacement Marking Dies for the Perma-Mark Marking Machine  
Must have the Marking Machine Marking Machine. The number 6 and 9 are the same die.  
Please select appropriate size of your marking machine.



### **LOTMP41-DL INDIVIDUAL DIES FOR MARKING MACHINE- LETTERS 4 1/2"**

Individual 4 1/2" Replacement Marking Dies for the Perma-Mark Marking Machine  
Must have the Marking Machine Marking Machine. The number 6 and 9 are the same die.  
Please select appropriate size of your marking machine.



### **LOTMP31-DN INDIVIDUAL DIES FOR MARKING MACHINE- NUMBERS 3 1/2"**

Individual 3 1/2" Replacement Marking Dies for the Perma-Mark Marking Machine  
Must have the Marking Machine Marking Machine. The number 6 and 9 are the same die.  
Please select appropriate size of your marking machine.



### **LOTMP41-DN INDIVIDUAL DIES FOR MARKING MACHINE- NUMBERS 4 1/2"**

Individual 4 1/2" Replacement Marking Dies for the Perma-Mark Marking Machine  
Must have the Marking Machine Marking Machine. The number 6 and 9 are the same die.  
Please select appropriate size of your marking machine.



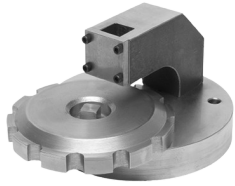
### **LOTMP35S PERMA-MARK COMPLETE SET OF ALPHA MARKING DIES**

Marking Dies for Perma-Mark Stainless Steel Marking Machines.  
Includes Letters A thru Z. Must have the Marking Machine Marking.  
Machine NOT included.



### **LOTMP32-SET PERMA-MARK COMPLETE SET OF NUMERIC DIES**

Complete Set of 8 Number Dies for the Perma-Mark Marking Machine.  
Must have the Marking Machine Marking Machine. The number 6 and 9 are the same die.  
Please select appropriate size of your marking machine.



**LOTMP31-  
PERMA-MARK NUMBERING MACHINES**  
"OPTIONS AVAILABLE"

A Minimum of 250 markers is required to purchase the numbering machines. Hand Numbering machine for PERMA-MARK Lot Markers. This is required if you wish to do your own marking. Includes 1/2" Digits 0-9, Cross mark Dies & Hammer.

Hand Numbering machine for PERMA-MARK Lot Markers. This is required if you wish to do your own marking. Includes 1/2" Digits 0-9, Cross mark Dies & Hammer.

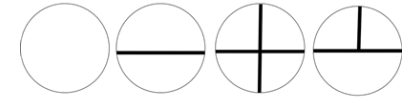


**Marking Charge**

**LOTMP52  
PERMA-MARK MARKING CHARGE -PER MARKER**

This Is A "Per Marker" Charge For The Labor Involved In Marking In Addition To The Digit Or Cross Mark Charge. When ordering Numbers/Letters or Cross marks, this item must also be ordered in addition to the marking charge!

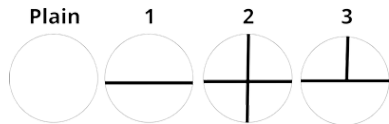
Please call us if you need your markers "marked".



These designs are available on all round lot markers

**LOTMP50  
PERMA-MARK NUMBERS/LETTERS/CROSS MARKS ADDED**

Additional Charge For Each Number, Letter Or Cross Mark Added To A Marker



**LOTLS0600  
CAST ALUMINUM MARKER NUMBERS & LETTERS FOR LOT MARKERS**

Additional Charge



**LOTLS03  
CAST ALUMINUM LOT MARKERS-3" ROUND WITH 3-SPLINE STAKE**  
"OPTIONS AVAILABLE"

Includes 8" 3-Spline Aluminum Stake. Maximum of 3 numerals or letters on this size. Please call us if Lettering, Numbering and/or Cross Marks are required as this can be confusing. If marking is required, please see Item Numbers LOTLS0600. Please allow 4-5 weeks for blank markers. Allow 6-8 weeks if markers are numbered or lettered.



**LOTLS04  
CAST ALUMINUM LOT MARKERS-4" ROUND WITH 3-SPLINE STAKE**  
"OPTIONS AVAILABLE"

Includes 8" 3-Spline integrally cast aluminum stake. Please call us if Lettering, Numbering and/or Cross Marks are required as this can be confusing. If marking is required, please see Item Numbers LOTLS0600 for pricing. Please allow 4-5 weeks for blank markers. Allow 6-8 weeks if markers are numbered or lettered.



## Cemetery Equipment & Supplies



### LOTLS04-E CAST ALUMINUM LOT MARKERS-4" ROUND WITH 8" STEEL SPIKE

Includes 8" Galvanized Steel Spike.  
Please call us if Lettering, Numbering and/or Cross  
Marks are required as this can be confusing.  
If marking is required, please see Item Numbers  
LOTLS0600 for pricing.  
Please allow 4-5 weeks for blank markers. Allow 6-8  
weeks if markers are numbered or lettered.



### LOTLS05 CAST ALUMINUM LOT MARKERS-5" SQUARE

Includes 8" integrally cast 3-spline aluminum spike.  
Please call us if Lettering, Numbering and/or Cross  
Marks are required as this can be confusing.  
If marking is required, please see Item Number  
LOTLS0600 for pricing.  
Please allow 4-5 weeks for blank markers. Allow 6-8  
weeks if markers are numbered or lettered.



### LOTMP3 PERMA-MARK STAINLESS STEEL LOT MARKERS-3 1/2" DIAMETER

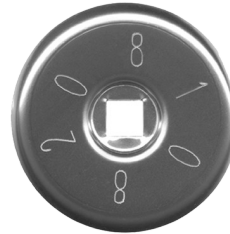
**"OPTIONS AVAILABLE"**

Grade #430 Stainless Steel.  
Includes 10" x 1/2" Diameter "Hot Dipped" Galvanized  
Threaded Carriage Bolt for maximum corrosion  
protection.  
Price is for a blank marker and carriage bolt only.  
This type of stainless is magnetic and can be found  
using a metal detector.  
Custom Marking is available at extra charge.  
Please call us if Lettering, Numbering and/or Cross



### LOTMP4 PERMA-MARK STAINLESS STEEL LOT MARKERS-4 1/2" DIAMETER

Grade #430 Stainless Steel.  
Includes 10" x 1/2" Diameter "Hot Dipped" Galvanized  
Threaded Carriage Bolt for maximum corrosion  
protection.  
This type of stainless is magnetic and can be found  
using a metal detector.  
Price is for blank marker and carriage bolt only.  
Custom Marking is available at extra charge.  
If marking is required, please see Item Numbers  
LOTMP50 & LOTMP52 for pricing.



### LOTMP3-MO PERMA-MARK STAINLESS STEEL LOT MARKER WITHOUT PIN-3 1/2" DIAMETER

**"OPTIONS AVAILABLE"**

Grade #430 Stainless Steel.  
This type of stainless is magnetic and can be found  
using a metal detector.  
Price is for a blank marker only.  
Custom Marking is available at extra charge.  
Please call us if Lettering, Numbering and/or Cross  
Marks are required as this can be confusing.  
If marking is required, please see Item Numbers  
LOTMP50 & LOTMP52 for pricing.



### LOTMP4-MO PERMA-MARK STAINLESS STEEL LOT MARKER WITHOUT PIN-4 1/2" DIAMETER

**"OPTIONS AVAILABLE"**

Grade #430 Stainless Steel.  
This type of stainless is magnetic and can be found  
using a metal detector.  
Price is for a blank marker only.  
Custom Marking is available at extra charge.  
Please call us if Lettering, Numbering and/or Cross  
Marks are required as this can be confusing.  
If marking is required, please see Item Numbers  
LOTMP50 & LOTMP52 for pricing.





**FLAGS21**  
**STAKE FLAGS 2 1/2" X 3 1/2" 21"**  
**"OPTIONS AVAILABLE"**

Presco's high quality marking flags are ideal for above ground marking for cemetery plots  
2 1/2" x 3 1/2" Color banners with a 21" wire stake  
Long-lasting material colors  
Wind and tear resistant for high performance down to -40 degrees  
Flag is glued to staff-not wrapped  
Other sizes are available. Special Imprinting is available on larger quantities. Please call us.  
100 Flags per bundle.



**MAU600-6**  
**MAUSOLEUM TRAYS-ECONOMY WEIGHT (PACK OF 6)**

Protects Your Mausoleum and Casket Bottoms  
Provides long-term protection of the casket and mausoleum.  
Lightweight but will not twist or warp.  
Trimmed lip to contain liquids.  
Durable .100 weight polyethylene for superior strength.  
Palletized for safe shipment nationwide.  
Minimum order is one pack of 6 trays.  
We suggest purchasing at least 2 packs of 6 (12 ea.) trays for freight savings.



**MAU601-6**  
**MAUSOLEUM TRAYS-STANDARD WEIGHT (PACK OF 6)**

Protects Your Mausoleum and Casket Bottoms  
Provides long-term protection of the casket and mausoleum.  
Lightweight but will not twist or warp.  
Trimmed lip to contain liquids.  
Durable .135 weight polyethylene for superior strength.  
Palletized for safe transit nationwide.  
Minimum order is one pack of 6 trays.  
We suggest purchasing at least 2 packs of 6 (12 ea.) trays for freight savings.



**CAN789S**

**EMKAY DEVOTIONAL CANDLES  
IN UNBREAKABLE CRYSTAL**

Useful for many occasions.  
High quality beeswax.  
Choose from 3 different sizes.  
Ruby and Blue also available.



**CAN1001S**

**REMEMBRANCE LIGHTS**

**"OPTIONS AVAILABLE"**

A Remembrance Light is the perfect memorial choice. Made especially for outdoor shrines, grottoes, or burial sites. Our Remembrance Light is weather and rust resistant. Available in either Center or Offset Spike styles. Choose from Ruby, Blue or Clear Plastic. Standard Latin Cross. Eastern Orthodox 3-Bar (not shown) is available in Offset Spike Style Only. Requires the #CAN797 Candles.



**Offset Spike  
Option**



**CAN797**

**EMKAY REFILL CANDLES FOR  
REMEMBRANCE LIGHTS**

Lightweight, non-combustible clear plastic container.  
Use for Remembrance Light fixtures or by themselves.  
Measures 2 1/2" x 8" High.  
Packed 24 per case.

**A Remembrance Light is the perfect memorial choice. Made especially for outdoor shrines, grottoes, or burial sites.**



**VAS4500S**

**REX CEMETERY FLUSH IN-GROUND FLOWER VASES**

**"OPTIONS AVAILABLE"**

This two-piece, flush-type vase is made of impact-extruded aluminum with a cast aluminum flange. This lets the vase keep its shiny, corrosion-resistant appearance indefinitely and set at ground level. The outer holder is designed to prevent frost heaving.

Without a riser, the inner vase will be flush with the ground when in use; with the 2-1/4" riser, the vase will be about 1/3" exposed when in use; and with the 3-1/2" riser, the vase will be about 1/2" exposed. Outer vase measures 4" Diameter x 7.5" High. Please call if only Inner Vase is needed.



**VAS4600S**

**LIFETIME CEMETERY FLUSH IN-GROUND FLOWER VASES**

**"OPTIONS AVAILABLE"**

Our Most Popular In-Ground Cemetery Vase  
Exclusive twist-lock feature secures inner vase  
Die-cast of solid, non-corroding zinc  
Flange around bottom resists frost heaving  
Ultra-durable polyester-based powder coating on both inner vase and outer holder  
Completely flush with ground when not in use.  
The look and feel of bronze and silver at a fraction of the cost.  
7 1/2" High x 4" Diameter with a 1" Rim.  
Five unique finishes to choose from: Aluminum, Bronze, Antique Silver, Antique Bronze.  
Please call for special pricing on larger quantities.  
Vase 7 3/4" H x 3.75" Diameter.  
Casing 8" H x 4.25" Diameter. Rim is .75".  
Please call if only the Inner Vase is needed.

**VASE5011**

**GREEN FLUTED PLASTIC CEMETERY CONE VASES**

Economical and durable.  
3" Wide x 7" Tall with 2" Removable Stems  
Packed 36 vases per case.



## Cemetery Equipment & Supplies



**FLS105S**  
**CEMETERY SPEARHEAD U.S. FLAGS-DELUXE SEWN**  
**"OPTIONS AVAILABLE"**

Great For Cemeteries, Businesses or Parades Banners are "Sewn" to the staff for durability. "Sewn" edges on Poly/Cotton Banners. 4" x 6" flags are mounted on a 3/16" x 10" gold plastic staff with ball on top. 8" x 12" flags are mounted on a 5/16" x 24" plain wooden shafts with gold spear on top. 12" x 18" flags are mounted on a 3/8" x 30" plain wooden shafts with gold spear on top.



**GRMK700**  
**MCNEILL #700 ALUMINUM GRAVE MARKERS**  
**"OPTIONS AVAILABLE"**

Attractive all aluminum and economical. Fill in information on aluminum insert with ball point pen or pencil. Imprinted up to 2 lines with your firm's name. 8 1/2" x 4 5/8" top with 15 3/4" stake. 3 Dozen Markers per Case.



**FLS106S**  
**CEMETERY SPEARHEAD U.S. FLAGS-ECONOMY**  
**"OPTIONS AVAILABLE"**

Great For Cemeteries, Businesses or Parades "No-Sew" Poly/Cotton Banner. Banner is "Glued" To Staff. 4" x 6" flags are mounted on a 3/16" x 10" gold plastic staff with ball on top. 8" x 12" flags are mounted on a 5/16" x 24" plain wooden shafts with gold spear on top. 12" x 18" flags are mounted on a 3/8" x 24" plain wooden shafts with gold spear on top. 1 Gross equals 144 flags.



**GRMK900**  
**MCNEILL #900 ALUMINUM GRAVE MARKERS**  
**"OPTIONS AVAILABLE"**

Weather resistant, durable, highly visible and economical. Includes box of assorted letters, numbers and letter holders. Includes 2 line imprint with your firm's name. 4 5/8" x 8 1/2" top with 15 3/4" aluminum stake. 3 Dozen Markers per Case.



**FLS862S**  
**POW-MIA SPEARHEAD FLAGS**  
**"OPTIONS AVAILABLE"**

Great For Cemeteries, Businesses or Parades 12" X 18" Polyester/Cotton. 3/8" x 30" Wooden Staff with Gold Spear.



**GRMKC166**  
**MCNEILL #C166 CAST CHROME GRAVE MARKERS**  
**"OPTIONS AVAILABLE"**

These markers are durable, rust-proof aluminum. Pre-Assembled and ready-to-use. Easy assembled letters and nameplates snap into place. Die cast top 4 1/2" x 8 1/2" with 15 3/4" aluminum stake. Comes with your choice of emblems. New 2-ply, black and silver Laser Etched Name plate included. 25 Markers Per Case.



**GRMKCG50**  
**MCNEILL #G50 CAST GOLD GRAVE MARKERS**  
**"OPTIONS AVAILABLE"**

These markers are durable, rust-proof, aluminum. Pre-Assembled and ready-to-use. Easy assembled letters and nameplates snap into place. Die cast top 4 1/2" x 8 1/2" with 15 3/4" aluminum stake. Comes with your choice of emblems. New 2-ply, black and silver Laser Etched Name plate included. 25 Markers Per Case.



**GRMKCS49**  
**MCNEILL #S49 CAST SILVER GRAVE MARKERS**  
**"OPTIONS AVAILABLE"**

These markers are durable, rust-proof, all-aluminum. Pre-Assembled and ready-to-use. Easy assembled letters and nameplates snap into place. Die cast top is 4 3/4" x 8 1/2" with 15 3/4" aluminum stake. Comes with your choice of emblems. New 2-ply, black and silver Laser Etched Name plate included. 25 Markers Per Case.



**GRMKSISTO**  
**MCNEILL SISTO ALUMINUM GRAVE MARKERS**  
**"OPTIONS AVAILABLE"**

Economical aluminum grave marker. Simply fill in information on aluminum insert with ball point pen or pencil. Imprinted with your firm's name. 6" x 3 1/2" top with 12" stake. 3 Dozen Markers per Case.



**GRMK100AS**  
**W.F. NORMAN #100 CROWN STRAIGHT ALUMINUM GRAVE MARKERS**  
**"OPTIONS AVAILABLE"**

All Norman Markers come in your choice of Grey, Black, and Green. The enamel baked galvanized steel ensures long lasting, rust resistant use. Acrylic panes, polyethylene envelopes and Bristol cards are included with your order. Packed 25 Markers per carton.



**GRMK101A**  
**W.F. NORMAN #101 CROWN TILTED ALUMINUM GRAVE MARKERS**  
**"OPTIONS AVAILABLE"**

Our Most Popular Grave Marker All Norman Markers come in your choice of Grey, Black, and Green. The enamel baked galvanized steel ensures long lasting, rust resistant use. Acrylic panes, polyethylene envelopes and Bristol cards are included with your order. Packed 25 markers per carton.



**GRMK109AS**  
**W.F. NORMAN #109 SURFACE ALUMINUM GRAVE MARKERS**  
**"OPTIONS AVAILABLE"**

Ground Level Marker All Norman Markers come in your choice of Grey, Black, and Green. The enamel baked galvanized steel ensures long lasting, rust resistant use. Acrylic panes, polyethylene envelopes and Bristol cards are included with your order. Packed 25 markers per carton.



# "SERVICE YOUR PROFESSION OUR PROMISE"

## Lynch Supply CO., Inc.

455 North Cherokee Street

Muskogee, OK 74403

[www.lynchsupply.com](http://www.lynchsupply.com) [info@lynchsupply.com](mailto:info@lynchsupply.com)

800.777.3151 918-687.3151



Service • Your Profession • Our Promise

**LYNCH SUPPLY CO.**

Since 1932

