

37 38 40

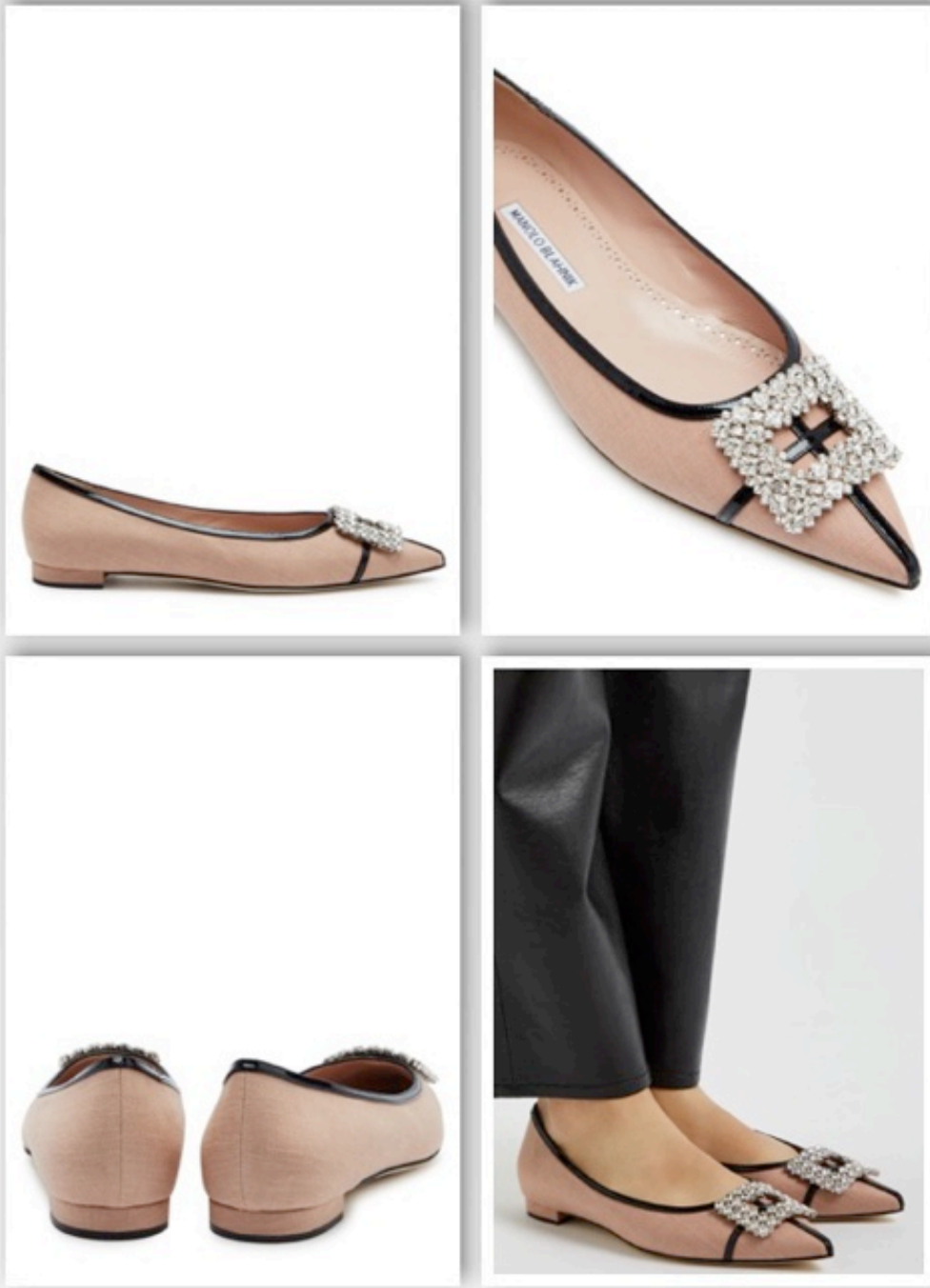
- Handmade
- Manolo Blahnik canvas pumps
- Heel measures approximately 4 inches/ 105mm
- Glittered, crystal-embellished pointed toe
- Slip-on
- Comes with a dust bag



MANOLO BLAHLNIK Hangisi 105 glittered pumps

46,000

36 37 38



MANOLO BLAHNIK Tubarian 10 linen flats
49,000

36 36.5 37 38 38.5 40



MANOLO BLAHNIK Hangisi 10 satin flats
43,000

MANOLO BLAHNIK FLASH SALE

36 37 37.5 38 38.5 40 41

- Handmade
- Manolo Blahnik satin mules
- Heel measures approximately 3.5 inches/ 90mm
- Crystal embellishments at toe and strap, pointed toe
- Slip-on



MANOLO BLAHNIK Lurum 90 embellished satin mules WHITE

59,000

37 37.5 38 38.5 40



- Handmade
- Manolo Blahnik silk-satin pumps
- Heel measures approximately 4 inches/ 105mm
- Crystal-embellished pointed toe
- Slip-on
- Come with a dust bag

MANOLO BLAHNIK Hangisi 105 silk-satin pumps LIL
47,000

36 37.5 38.5

- Heel measures approximately 105mm/ 4 inches
- White and black satin, black patent-leather (Calf)
- Elasticated slingback strap
- Fits true to size, take your normal size
- Italian sizing



MANOLO Bimixpla 105 buckled checked satin and patent-leather slingback pumps

64,000

35 37.5 39 39.5 40 41 42

- Heel measures approximately 70mm/ 3 inches
- White and black satin
- Slip on
- Fits small to size, take a half size larger than normal



MANOLO BLAHNIK Latexamu 70 embellished flocked satin mules

55,000

36 37 40 41 42

- Heel measures approximately 10mm/ 0.5 inches
- Gold leather (Lamb)
- Slip on



MANOLO BLAHNIK Hangisi embellished metallic leather point-toe flats GOLD

45,000

35 37

- Heel measures approximately 70mm/ 3 inches
- Grey metallic-leather (Lamb)
- Slip on



MANOLO BLAHNIK Hangisi 70 embellished metallic leather pumps METTALIC

49,000

34 35 36 36.5 37 37.5 38
39 41 41.5

- Heel measures approximately 90mm/ 3.5 inches
- White and black satin
- Slip on



MANOLO BLAHNIK Latexa 90 embellished checked satin pumps

52,000

35 36 37 37.5 38 39 41.5

- Heel measures approximately 10mm/ 0.5 inches
- White satin
- Slip on



MANOLO BLAHNIK Hangisiflat crystal-embellished satin point-toe flats WHITE

45,000

35 37 41.5

- Heel measures approximately 10mm/ 0.5 inches
- Light-blue satin
- Slip on



MANOLO BLAHNIK Hangisi crystal-embellished satin point-toe flats BLUE

44,000

36 36.5 37.5 38 38.5 41 42

- Heel measures approximately 90mm/ 3.5 inches
- Gold leather (Sheep)
- Slip on



MANOLO BLAHNIK Hangisi 90 embellished metallic leather pumps GOLD
42,000

35 37.5 39 40 41

- Heel measures approximately 90mm/ 3.5 inches
- Gold leather (Sheep)
- Slip on



MANOLO BLAHNIK Hangisi 105 embellished metallic leather pumps SILVER

42,000

35 36 37 39 40 41 42



- Heel measures approximately 105mm/ 4 inches
- Silver leather (Lamb), clear PVC
- Buckle-fastening ankle strap



MANOLO BLAHNIK Elhob 105 crystal-embellished PVC and metallic leather sandals
49,000



Manolo Blahnik's 'Capri Long' clutch is embellished with the same crystal-embellished buckle found on its iconic pumps. Crafted from particularly delicate leather in a sleek, streamlined shape, the interior includes a slip pocket for your cards. It's accompanied by a slim detachable strap.

- Depth: 6cm / 2.4in
- Max. Strap Length: 114cm / 44.9in
- Height: 13.5cm / 5.3in
- Width: 32cm / 12.6in

MANOLO BLAHNIK Capri Long crystal-embellished metallic leather clutch GUN METAL

71,000

- Depth: 6cm / 2.4in
- Max. Strap Length: 114cm / 44.9in
- Height: 13.5cm / 5.3in
- Width: 32cm / 12.6in



MANOLO BLAHNIK Capri Long crystal-embellished metallic leather clutch GOLD

61,000