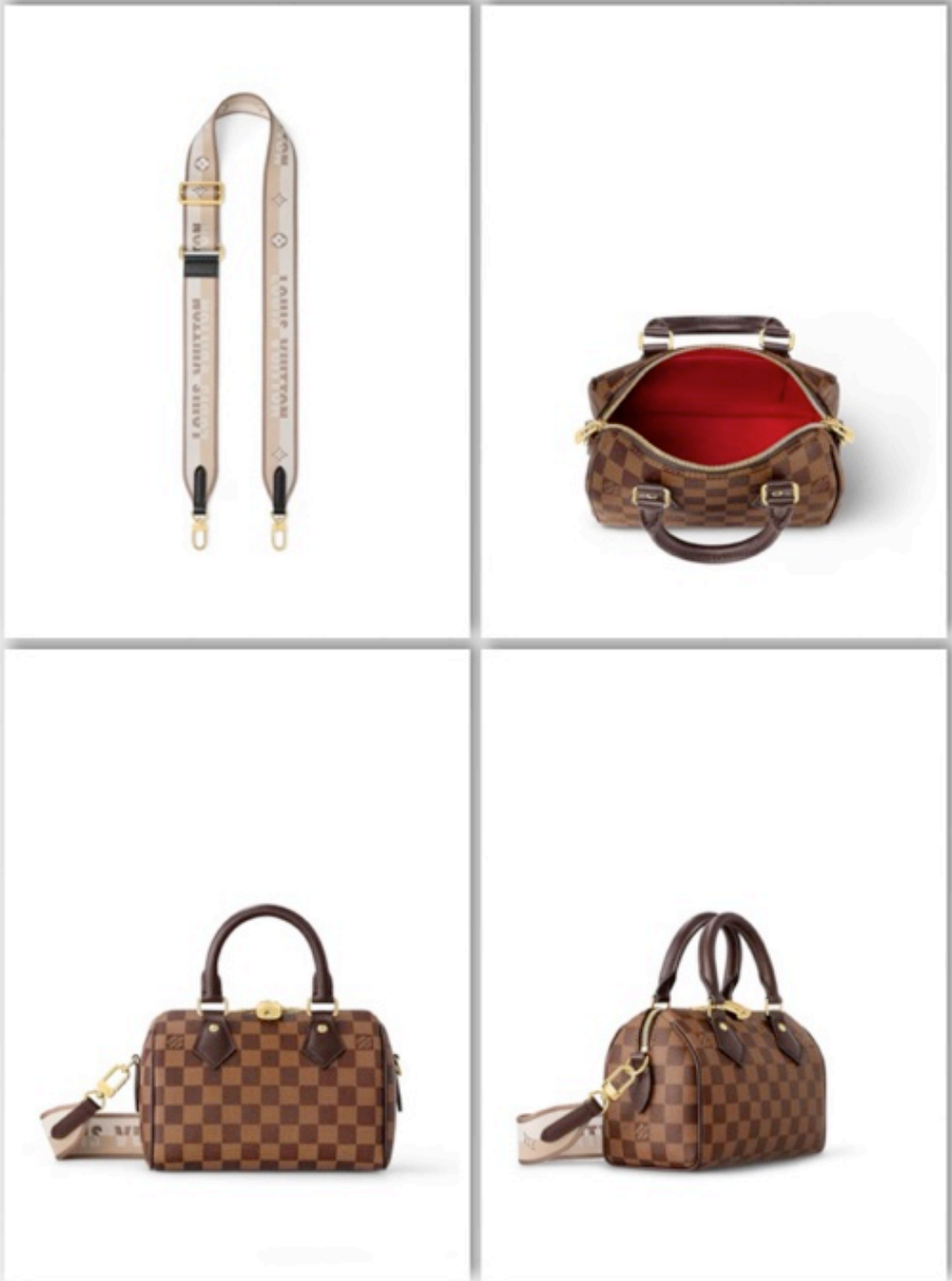


Table of Contents

Product	Code	Page
Speedy Bandoulière 20 Bag	54758	2
Speedy Bandoulière 20 Bag	54757	3
Speedy Bandoulière 20 Bag	54756	4
Sunset Bag	54755	5
Marellini Bag	54754	6
Marelle Bag	54753	7
LV x TM Marellini Bag	54752	8
Pochette Tirette Bag	54751	9
CarryAll PM Bag	54750	10
Vivacité Bag	54749	11
Sunset Bag	54748	12
Looping Bag	54747	13
CarryAll BB Bag	54746	14
Neverfull PM Tote Bag	54745	15
Neverfull Reversible Neverfull Bandoulière Inside Out GM Bag	54744	16
Neverfull Bandoulière Inside Out BB Bag	54743	17
Neverfull Bandoulière Inside Out BB Bag	54742	18
Neverfull Bandoulière Inside Out MM Tote Bag	54741	19
Neverfull Bandoulière Inside Out MM Tote Bag	54740	20
Neverfull Inside Out MM Bag	54739	21
Neverfull PM Tote Bag	54738	22
Neverfull PM Tote Bag	54737	23
Neverfull MM Tote Bag	54736	24
Neverfull MM Tote Bag	54735	25
Neverfull MM Tote Bag	54734	26
Neverfull MM Tote Bag	54733	27
LV x TM Neverfull MM Bag	54732	28
M14025 Fashion Show Nil Bag	54691	29
M14016 Fashion Show Nil Bag	54690	30



20.5 x 13.5 x 12

cm
(Length x height x width)

- Damier Ebene coated canvas
- Cowhide leather
- Cowhide leather trim
- Textile lining
- Gold-colour hardware
- Padlock
- Inside flat pocket
- Double zipped closure
- Strap: Removable , adjustable
- Strap Drop: 39.0 cm
- Strap Drop Max: 58.0 cm
- Handle: Single x2

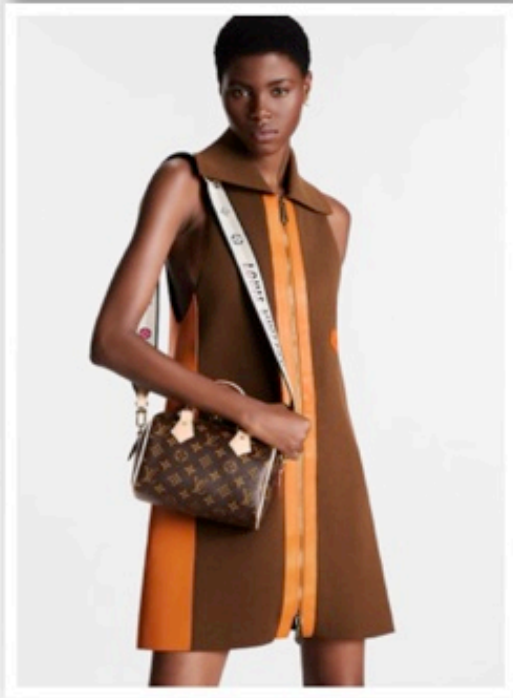
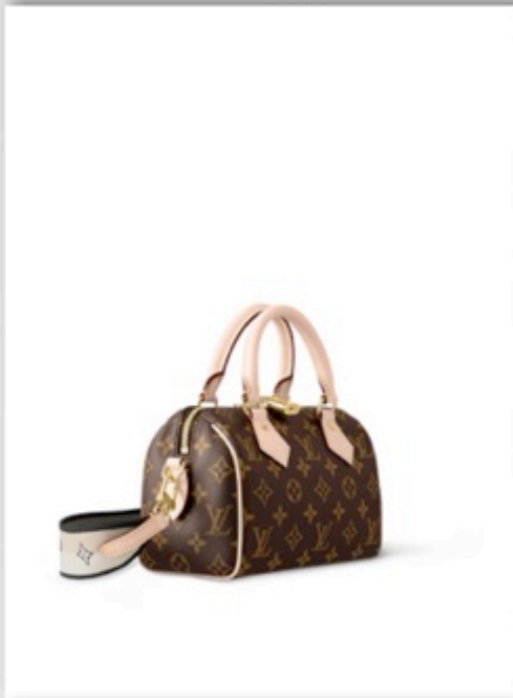
Speedy Bandoulière 20 Bag

109,000

20.5 x 13.5 x 12

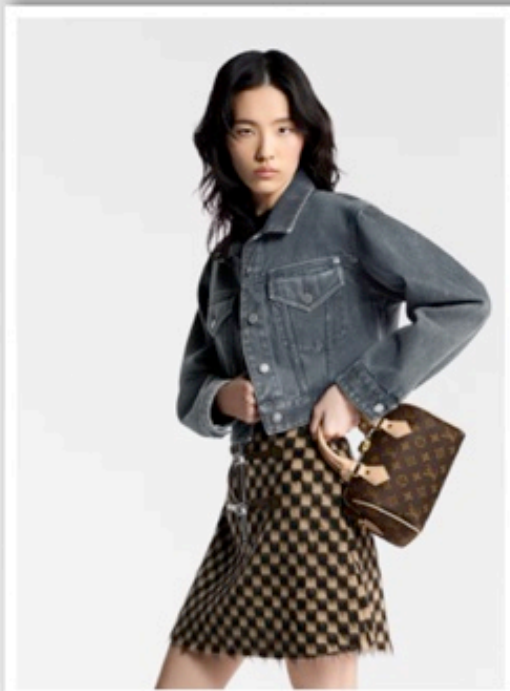
cm
(Length x height x width)

- Black
- Monogram coated canvas
- Natural cowhide trim
- Textile lining
- Gold-colour hardware
- Padlock
- Flat inside pocket
- Fits 6.7-inch smartphone, Lou wallet, keys, lipstick, tissues, sunglasses
- Weight: 0.6 kg
- Strap: Removable, adjustable
- Strap Drop: 39.0 cm
- Strap Drop Max: 58.0 cm
- Handle: Single x2



Speedy Bandoulière 20 Bag

109,000



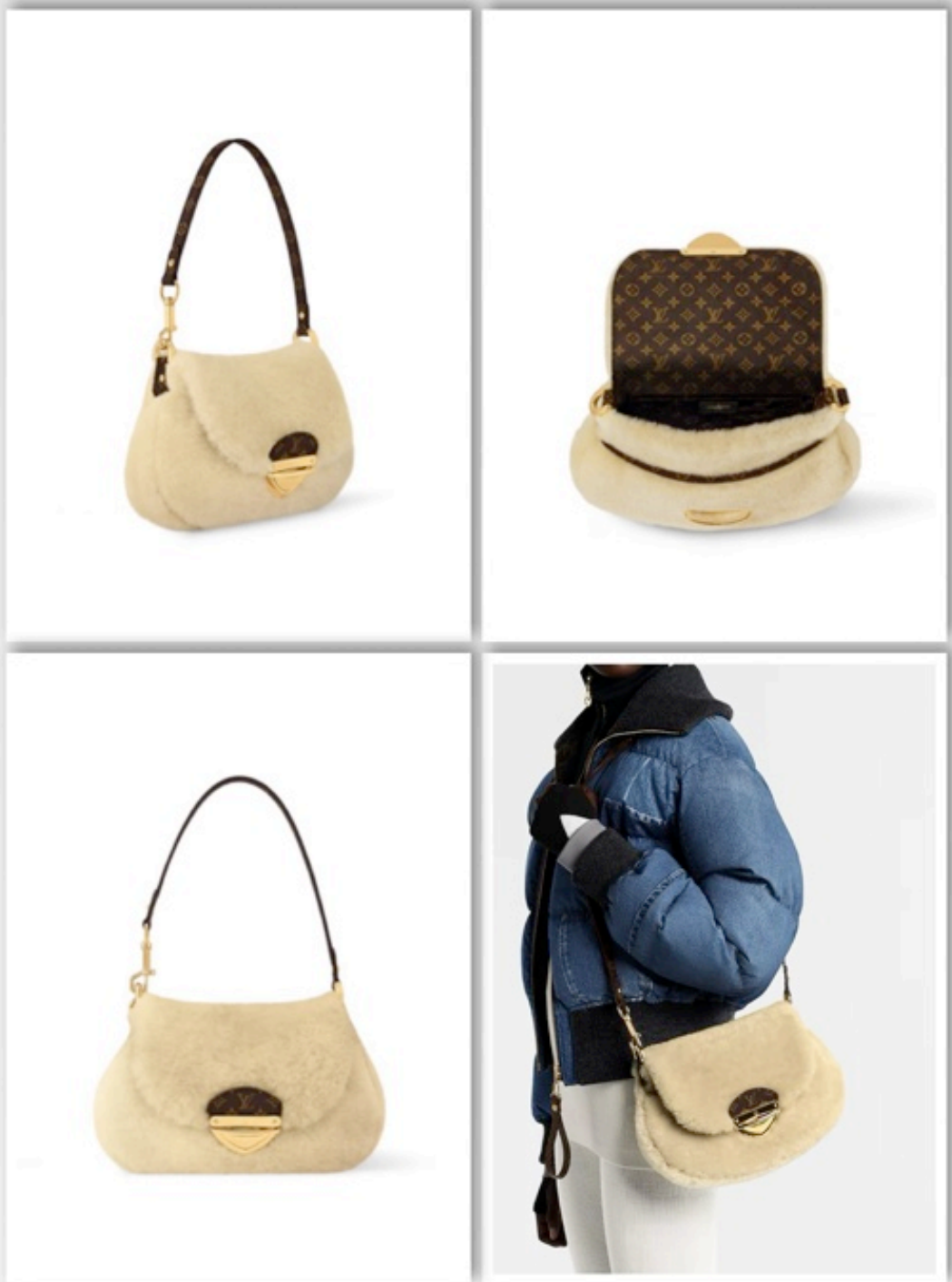
20.5 x 13.5 x 12

cm
(Length x height x width)

- Monogram coated canvas
- Natural cowhide leather trim
- Textile lining
- Gold-colour hardware
- Padlock
- Inside flat pocket
- Double zip closure
- Strap: Removable , adjustable
- Strap Drop: 39.0 cm
- Strap Drop Max: 58.0 cm
- Handle: Single x2

Speedy Bandoulière 20 Bag

109,000



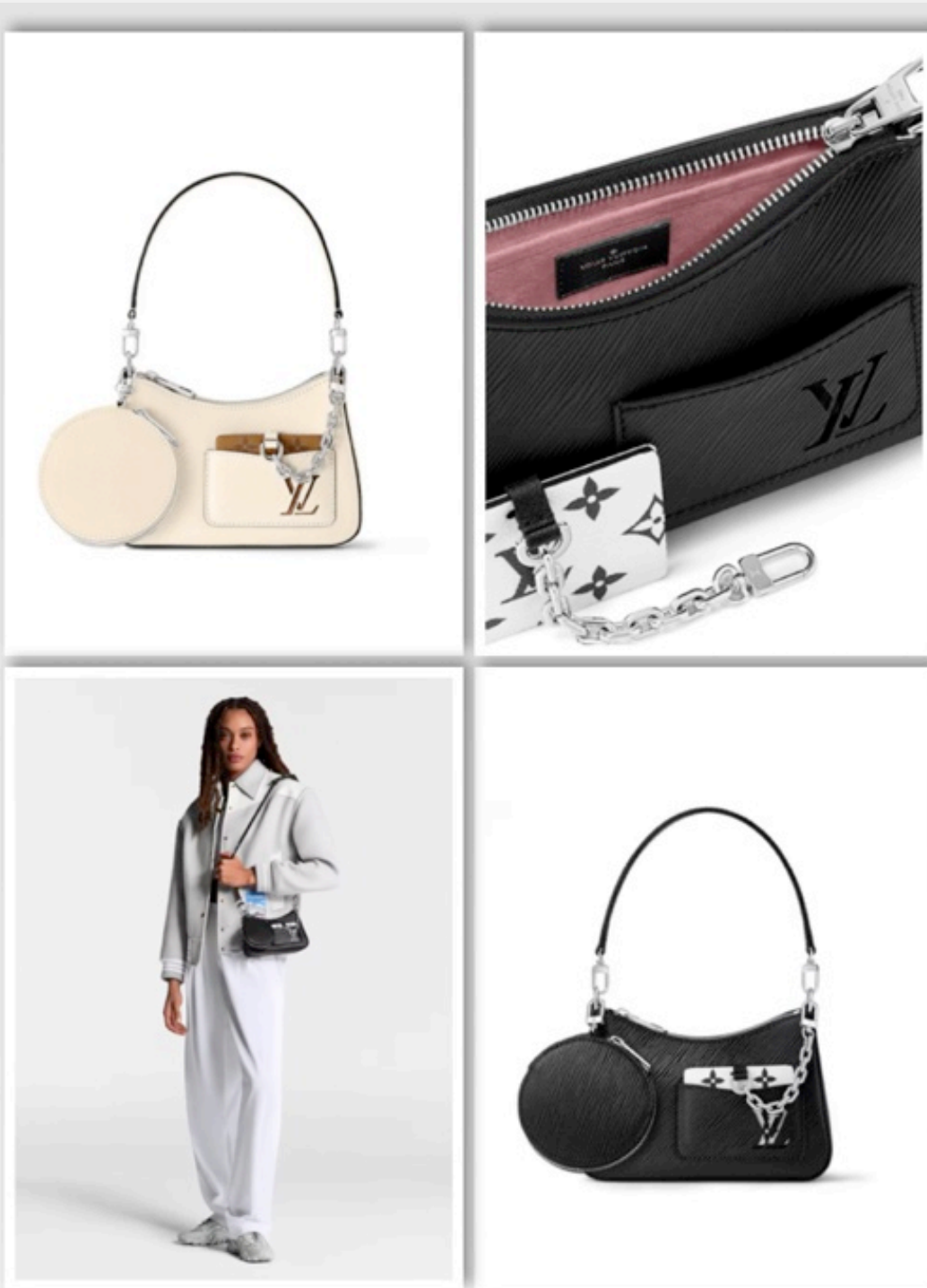
27 x 18 x 3

cm
(Length x height x width)

- Cream
- Shearling
- Coated canvas trim
- Polyester lining
- Gold-colour hardware
- Tuck lock
- 1 inside flat pocket
- 1 front flat pocket
- Fits smartphone, keys, Lou wallet, earphones and lipstick
- Strap: Removable , adjustable
- Strap Drop: 23.0 cm
- Strap Drop Max: 48.5 cm

Sunset Bag

220,000



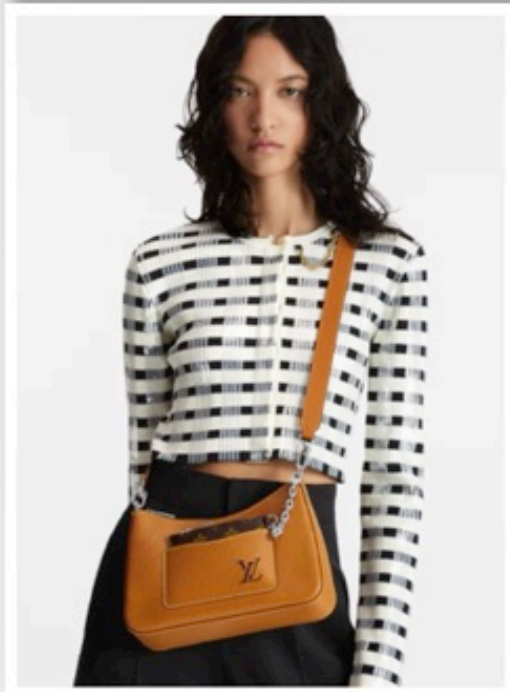
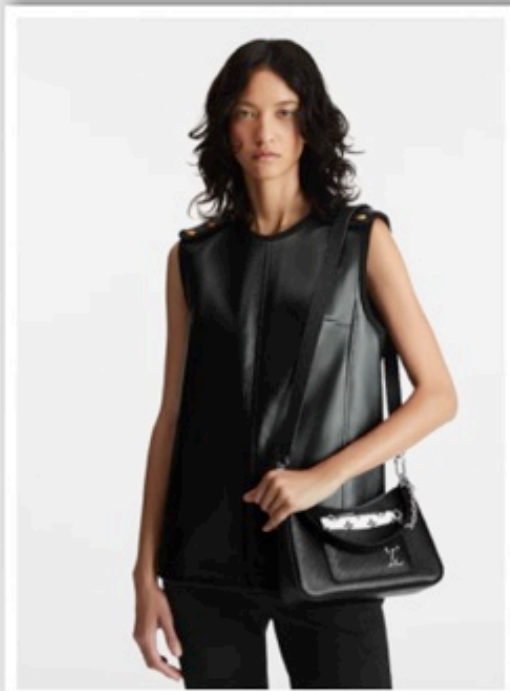
19 x 13.5 x 6.5

cm
(Length x height x width)

- Black
- Epi grained cowhide leather
- Smooth cowhide leather trim
- Microfibre lining
- Silver-colour hardware
- Removable zipped round coin purse
- Front flat pocket
- Mirror hooked to the bag with removable chain
- Zip closure
- Flat inside pocket
- Strap: Removable , adjustable
- Strap Drop: 30.0 cm
- Strap Drop Max: 37.5 cm

Marellini Bag

115,000



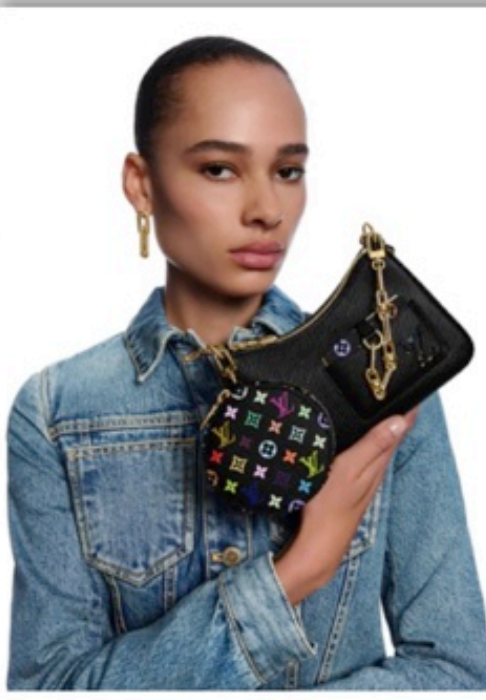
25 x 15 x 8

cm
(Length x height x width)

- Epi grained leather
- Smooth cowhide leather trim
- Smooth cowhide leather Textile Monogram Tiles printed lining
- Silver-colour hardware
- Flat front pocket
- Removable zipped pouch in Monogram Tiles canvas hooked to the bag with a removable chain
- Fits smartphone, keys, compact wallet and earphones
- Strap: Removable , adjustable
- Strap Drop: 47.0 cm
- Strap Drop Max: 56.0 cm
- Handle: Single, removable

Marelle Bag

119,000



19 x 13.5 x 6.5

cm
(Length x height x width)

- Black/Multicoloured
- Epi grained cowhide leather
- Smooth cowhide leather trim
- Textile lining
- Gold-colour hardware
- Zip closure
- Flat outside pocket
- Removable round zipped coin purse
- Mirror attached with a removable chain
- Fits smartphone, keys, earphones, Lou wallet
- Please note that the colour placement of the Monogram motif varies per product
- Strap: Removable, adjustable
- Strap Drop: 30.0 cm
- Strap Drop Max: 37.5 cm

LV x TM Marellini Bag

152,000



22 x 12 x 5.5

cm
(Length x height x width)

- Monogram coated canvas
- Natural cowhide leather trim
- Microfibre lining
- Gold-colour hardware
- Zip closure
- LV engraved padlock
- Fits: a 17-cm/6.7-inch smartphone, a Rosalie Coin Purse, earphones, keys and lipstick
- Strap: Removable , adjustable
- Strap Drop: 49.0 cm
- Strap Drop Max: 61.0 cm
- Handle: Single, removable

Pochette Tirette Bag

97,000

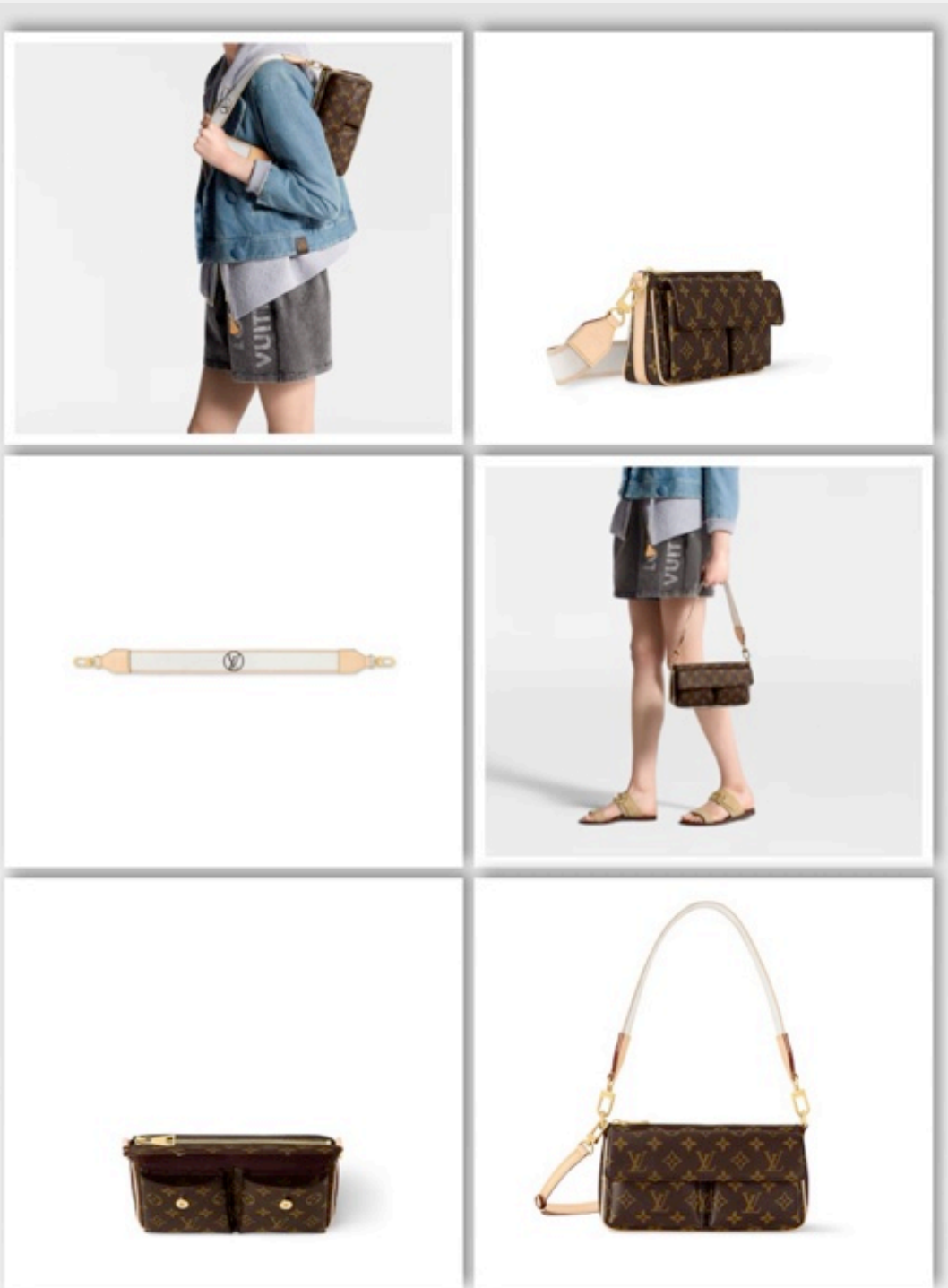


29.5 x 24 x 12
cm
(Length x height x
width)

- Tourterelle
Grey/Crème
Beige
- Embossed supple
grained cowhide
leather
- Supple grained
cowhide leather
trim
- Microfibre lining in
Navy Blue
- Gold-colour
hardware
- Zip closure
- 2 flat inside
pockets
- Zipped inside
pocket
- Removable
zipped pouch
attached by a
leather cord
- 4 protective metal
bottom studs
- Strap: Non-
removable,
adjustable
- Strap Drop: 32.0
cm
- Strap Drop Max:
50.0 cm

CarryAll PM Bag

159,000



25 x 15 x 8

cm
(Length x height x width)

- Monogram coated canvas
- Natural cowhide leather trim
- Twill lining
- Gold-colour hardware
- Zip closure
- Flat inside pocket
- 2 front pockets
- Outside back flat pocket
- Main compartments fit smartphone and compact wallet
- Front pocket fits earphones, simple cardholder and keys
- Strap: Removable , adjustable
- Strap Drop: 43.0 cm
- Strap Drop Max: 51.5 cm
- Handle: Single, removable

Vivacité Bag

124,000



27 x 18 x 3

cm
(Length x height x width)

- Monogram coated canvas
- Cowhide leather trim
- Microfibre lining
- Gold-colour hardware
- 1 extra strap for cross-body carry
- Tuck lock
- 1 flat inside pocket
- 1 flat front pocket
- Fits smartphone, keys, long wallet and earphones
- Strap: Removable, adjustable
- Strap Drop: 23.0 cm
- Strap Drop Max: 48.5 cm

Sunset Bag

155,000



28 x 15 x 7

cm
(Length x height x width)

- Monogram coated canvas
- Cowhide leather trim
- Microfibre lining
- Gold-colour hardware
- Zip closure
- Removable signature charm
- Key bell
- Padlock and key
- Additional textile strap for cross-body carry
- Fits smartphone, keys, Sarah wallet and earphones
- Strap: Removable , adjustable
- Strap Drop: 45.0 cm
- Strap Drop Max: 65.0 cm
- Handle: Single, removable

Looping Bag

142,000



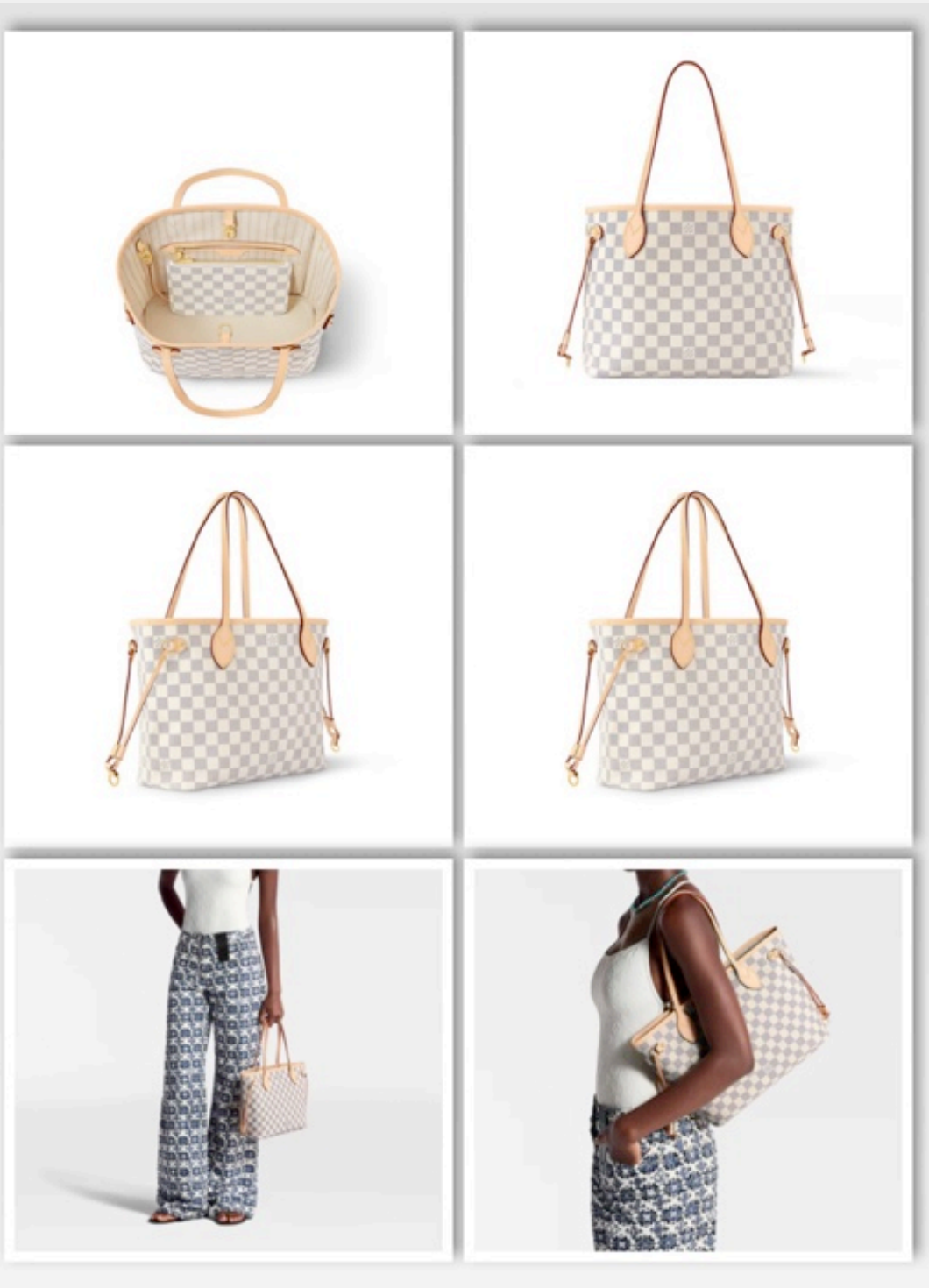
26 x 17 x 10

cm
(Length x height x width)

- Monogram coated canvas
- Cowhide leather trim
- Microfibre lining
- Gold-colour hardware
- Leather lace and magnet closure
- Inside zipped flat pocket
- Name tag
- Fits smartphone, keys, Zippy wallet and earphones
- Strap: Non-removable, adjustable
- Strap Drop: 40.0 cm
- Strap Drop Max: 50.0 cm
- Handle: Single, removable

CarryAll BB Bag

149,000



29 x 21 x 12
cm
(Length x height x
width)

- Damier Azur coated canvas
- Natural cowhide leather trim
- Striped textile lining
- Gold-colour hardware
- 4 side laces
- Hook closure
- Flat, textile-lined zipped inside pocket
- Removable zipped pouch
- D-ring
- Handle: Single x2

Neverfull PM Tote Bag

89,000



39 x 32 x 19

cm
(Length x height x width)

- Monogram coated canvas/Stamped Beige textile
- Coated canvas and textile
- Natural cowhide leather trim
- Gold-colour hardware
- Hook closure
- Interior printed flat zipped pocket
- 2 side laces
- 2 side hooks
- Fits 13-inch laptop, smartphone, keys, Zippy wallet and earphones
- Strap: Removable, non-adjustable
- Strap Drop: 42.0 cm
- Handle: Single x2

Neverfull Reversible Neverfull Bandoulière Inside Out
GM Bag

135,000

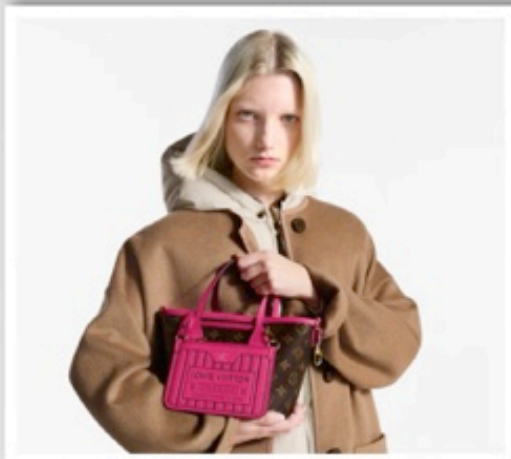


26.5 x 16.5 x 11
cm
(Length x height x
width)

- Black cowhide leather/Monogram coated canvas
- Grained cowhide leather and coated canvas
- Cowhide leather trim
- Gold-colour hardware
- Removable zipped pouch
- Hook closure
- Fits smartphone, Rosalie coin purse, keys, earphones, lipstick, tissues
- Weight: 0.5 kg
- Strap: Removable , non-adjustable
- Strap Drop: 50.0 cm
- Handle: Single x2

Neverfull Bandoulière Inside Out BB Bag

132,000



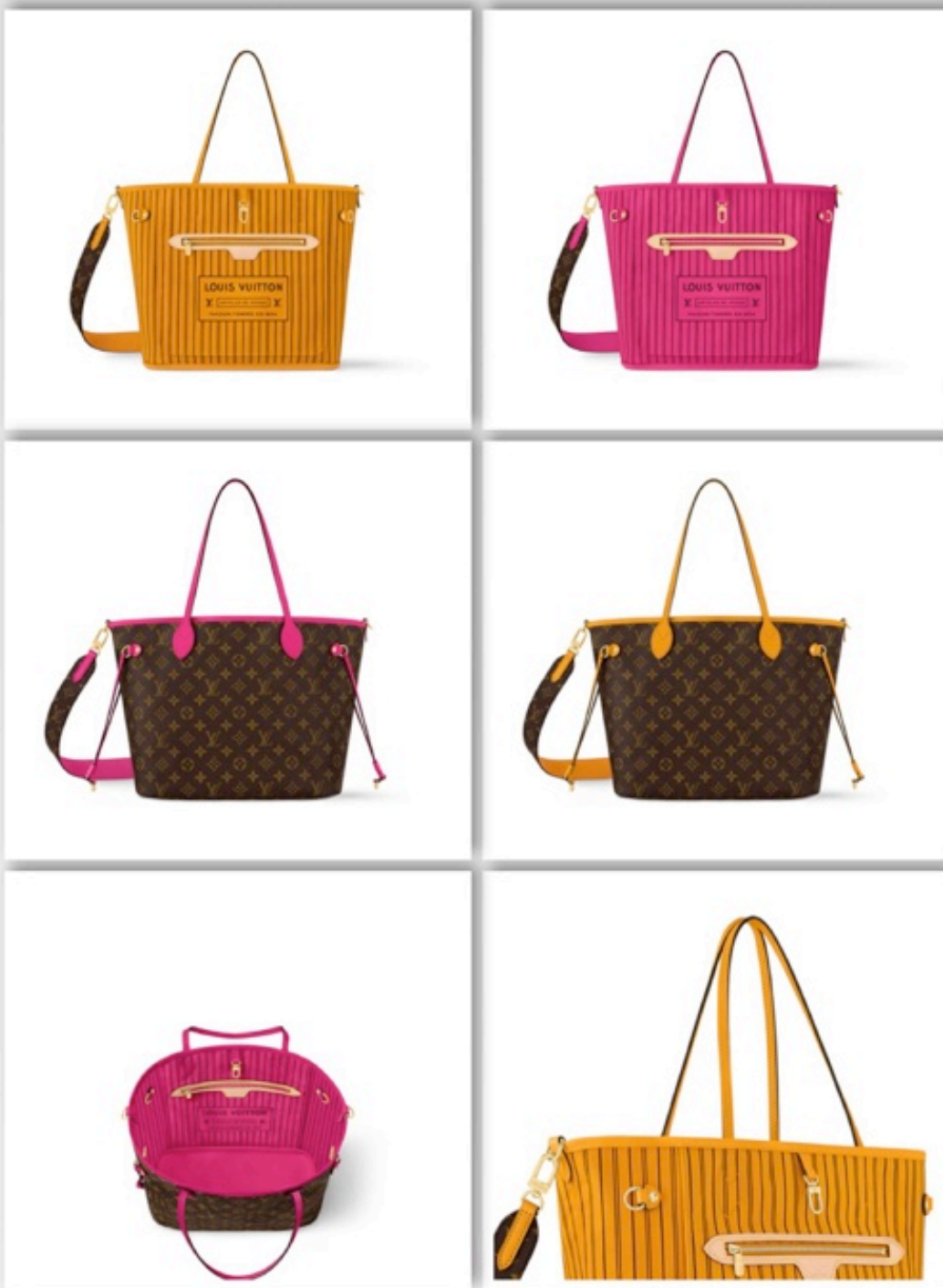
26.5 x 16.5 x 11

cm
(Length x height x width)

- Rose Pondichery cowhide leather/Monogram coated canvas
- Grained cowhide leather and coated canvas
- Cowhide leather trim
- Gold-colour hardware
- Removable zipped pouch
- Hook closure
- Fits smartphone, keys, earphones
- Strap: Removable , non-adjustable
- Strap Drop: 50.0 cm
- Handle: Single x2

Neverfull Bandoulière Inside Out BB Bag

132,000



31 x 28 x 14

cm
(Length x height x width)

- Monogram coated canvas
- Coated canvas and textile
- Cowhide leather trim
- Gold-colour hardware
- Hook closure
- Interior printed flat zipped pocket
- 2 side laces
- 2 side hooks
- Fits 13-inch laptop, smartphone, keys, Zippy wallet and earphones
- Strap: Removable , non-adjustable
- Strap Drop: 42.0 cm
- Handle: Single x2

Neverfull Bandoulière Inside Out MM Tote Bag

125,000



31 x 28 x 14

cm
(Length x height x width)

- Monogram coated canvas
- Coated canvas and textile
- Cowhide leather trim
- Gold-colour hardware
- Hook closure
- Interior printed flat zipped pocket
- 2 side laces
- 2 side hooks
- Fits 13-inch laptop, smartphone, keys, Zippy wallet and earphones
- Strap: Removable , non-adjustable
- Strap Drop: 42.0 cm
- Handle: Single x2

Neverfull Bandoulière Inside Out MM Tote Bag

125,000

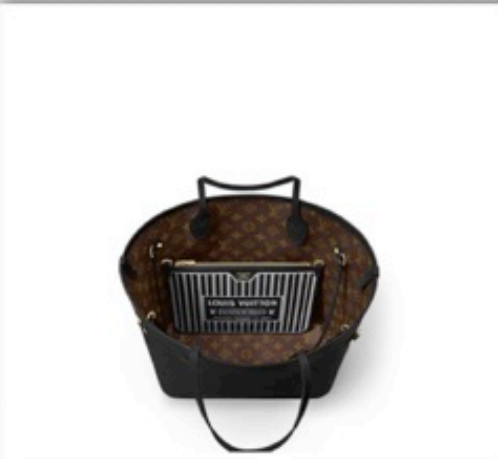
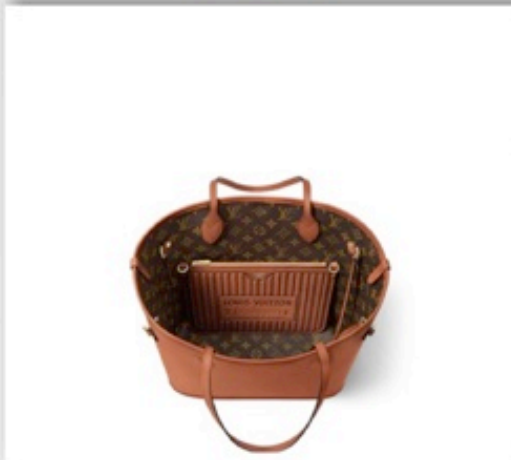
LV List

31 x 28 x 14

cm

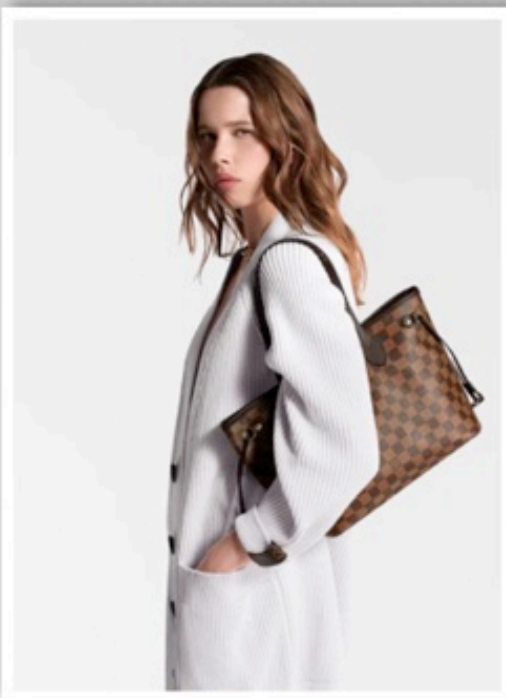
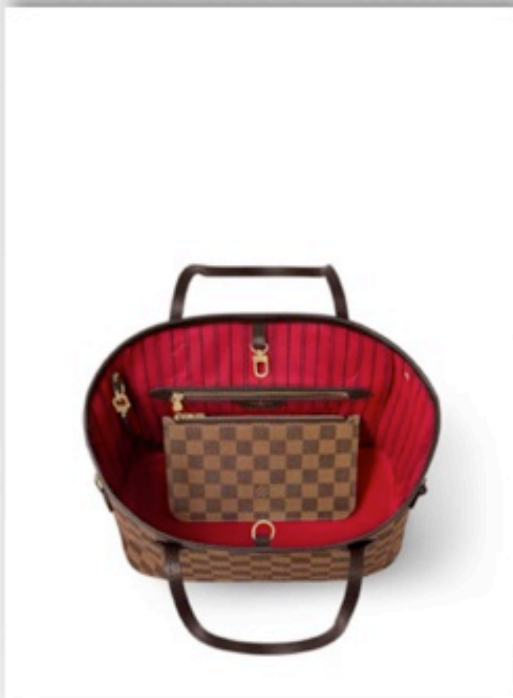
(Length x height x width)

- cowhide leather/Monogram coated canvas
- Grained cowhide leather and coated canvas
- Cowhide leather trim
- Gold-colour hardware
- Removable zipped pouch
- 2 side laces
- 2 side hooks
- Fits 13-inch laptop, smartphone, keys, Zippy wallet and earphones
- Weight: 0.9 kg
- Handle: Single x2



Neverfull Inside Out MM Bag

159,000



29 x 21 x 12

cm
(Length x height x width)

- Damier Ebene coated canvas
- Natural cowhide leather trim
- Striped textile lining
- Gold-colour hardware
- 4 side laces
- Hook closure
- Flat, textile-lined zipped inside pocket
- Removable zipped pouch
- D-ring
- Handle: Single x2

Neverfull PM Tote Bag

96,000



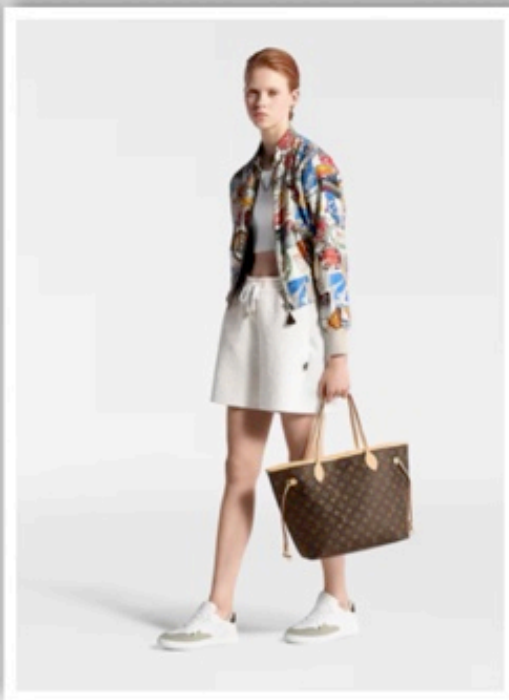
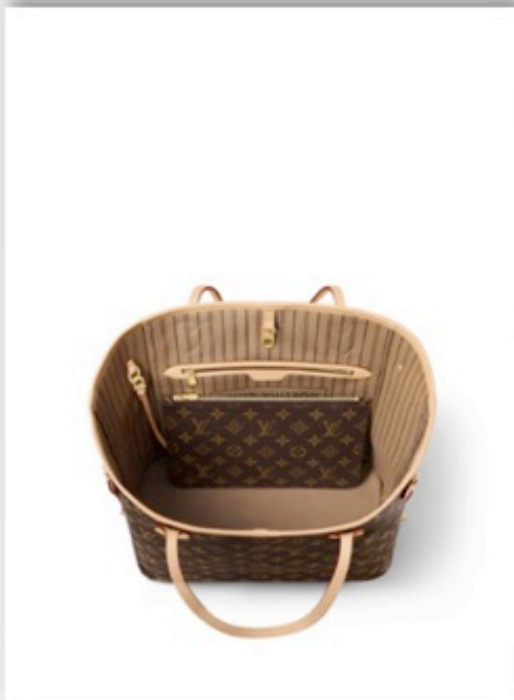
29 x 21 x 12

cm
(Length x height x width)

- Beige
- Monogram coated canvas
- Natural cowhide leather trim
- Striped textile lining
- Gold-colour hardware
- 4 side laces
- Hook closure
- Flat, textile-lined zipped inside pocket
- Removable zipped pouch
- D-ring
- Fits: a 22.9-cm/9-inch tablet, a smartphone, a Zippy Long Wallet, earphones, sunglasses, keys, tissues and lipstick
- Handle: Single x2

Neverfull PM Tote Bag

96,000



Monogram canvas with a natural cowhide trim
31 x 28 x 14

cm
(Length x height x width)

Neverfull MM Tote Bag

105,000

Damier Ebene canvas
with a natural cowhide trim
31 x 28 x 14

cm
(Length x height x width)



Neverfull MM Tote Bag
105,000

31 x 28 x 14

cm
(Length x height x width)



Neverfull MM Tote Bag

135,000

31 x 28 x 14

cm
(Length x height x width)



Neverfull MM Tote Bag

135,000

31 x 28 x 14

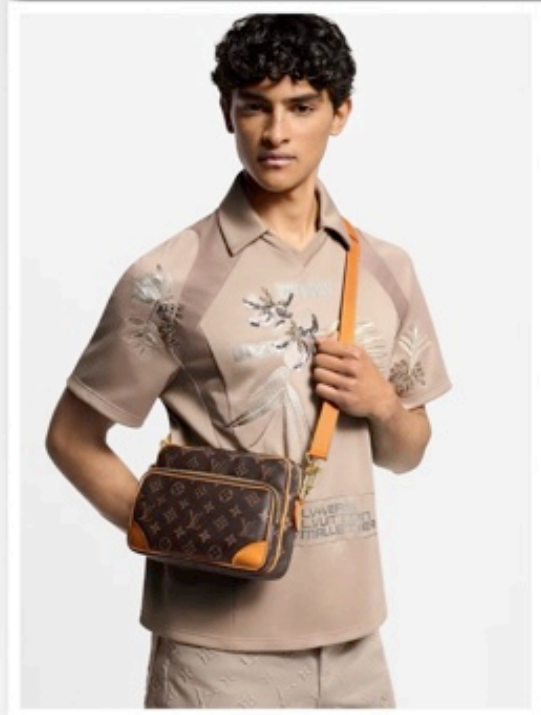
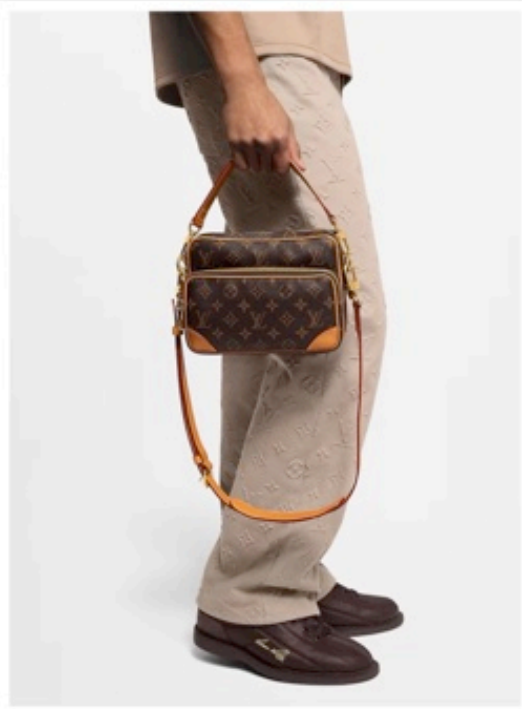
cm
(Length x height x width)

- Monogram coated canvas
- Cowhide leather trim
- Textile lining
- Gold-colour hardware
- Hook closure
- Flat inside zipped pocket
- Removable pouch
- 4 side laces
- D-ring
- Fits smartphone, keys, Zippy wallet, earphones
- Handle: Single x2



LV x TM Neverfull MM Bag

179,000

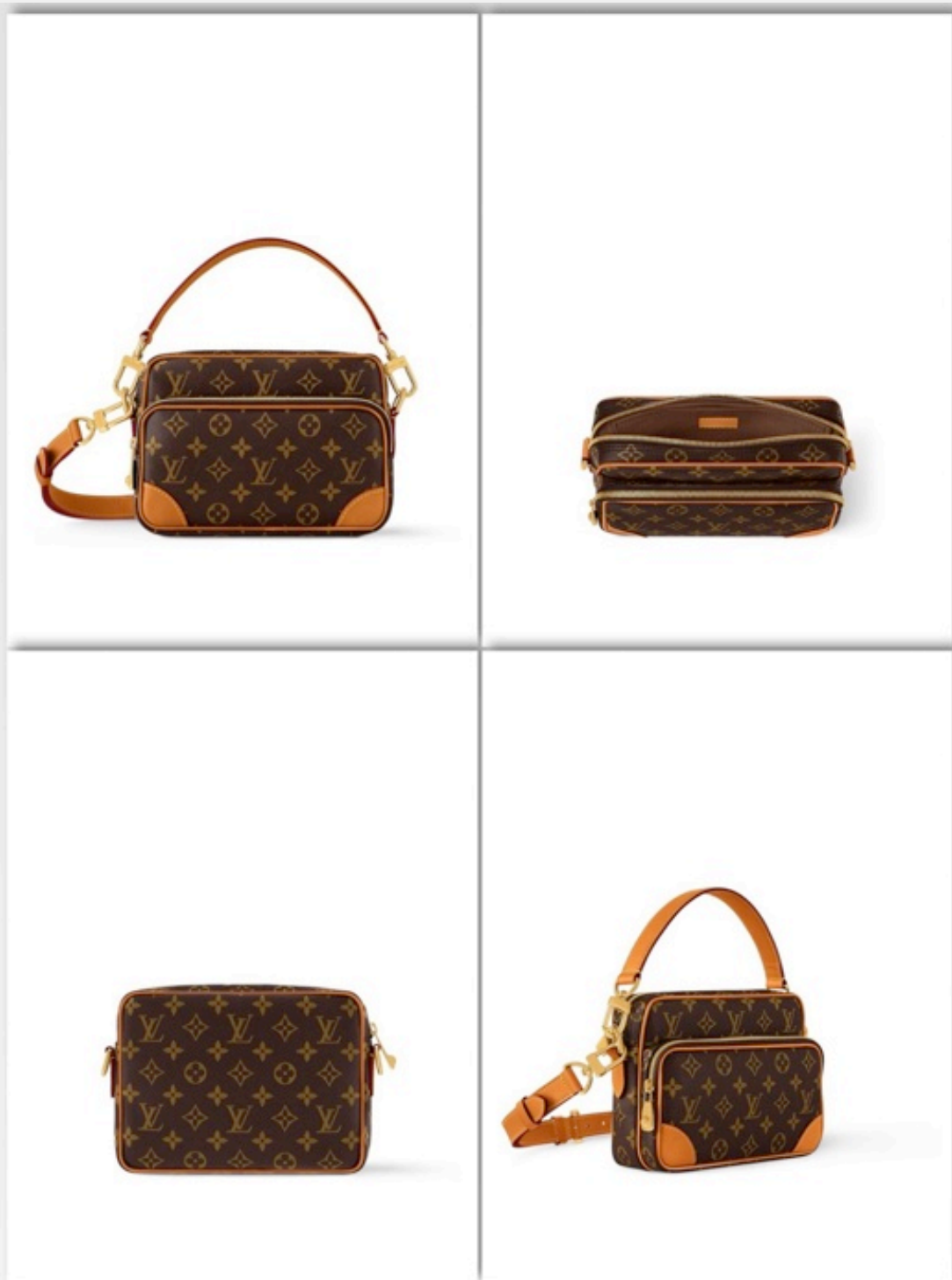


25 x 17.5 x 11
cm
(Length x height x
width)

- Monogram
- Calf leather
- Aged natural cowhide leather trim
- Textile lining
- Aged gold-tone hardware
- Zip closure
- Removable metallic tag
- Side lock
- Zipped front pocket
- Main compartment
- Flat inside pocket
- Strap: Removable , adjustable
- Strap Drop: 49.0 cm
- Strap Drop Max: 59.0 cm
- Handle: Single, removable

M14025 Fashion Show Nil Bag

195,000



25 x 17.5 x 11

cm
(Length x height x
width)

- Monogram coated canvas
- Aged natural cowhide leather trim
- Textile lining
- Aged gold-colour hardware
- Zip closure
- Zipped front pocket
- Main compartment
- Flat inside pocket
- Strap: Removable , adjustable
- Strap Drop: 49.0 cm
- Strap Drop Max: 59.0 cm
- Handle: Single, removable

M14016 Fashion Show Nil Bag

125,000