

Table of Contents

Product	Code	Page
Prada Quilted re-nylon shoulder bag	3000	<u>2</u>
PRADA CANVAS CROSSBODY/TOTE BROWN	3001	<u>3</u>
PRADA CANVAS CROSSBODY/TOTE BLK	3002	<u>4</u>
PRADA NYLON DOUBLE POCKET SATCHEL	3003	<u>5</u>
PRADA NYLON SATCHEL	3004	<u>6</u>
PRADA NYLON CAMERA BAG	3005	<u>7</u>
PRADA MINI LEATHER POUCH	3006	<u>8</u>
PRADA MINI LEATHER DOMED POUCH	3007	<u>9</u>
PRADA LEATHER DOMED POUCH BROWN	3008	<u>10</u>
PRADA LEATHER CROSSBODY HOBO BLK	3009	<u>11</u>
PRADA LEATHER CROSSBODY HOBO HOT PINK	3010	<u>12</u>
PRADA NYLON TOP HANDLE MEDIUM CROSSBODY	3011	<u>13</u>
PRADA NYLON BACKPACK RED	3012	<u>14</u>
PRADA NYLON CROSSBODY TRUNK	3013	<u>15</u>
PRADA NYLON BACKPACK BLACK	3014	<u>16</u>
PRADA SMALL NYLON DOME CROSSBODY	3015	<u>17</u>
PRADA SML CANVAS BUCKET CROSSBODY BAG BLACK	3016	<u>18</u>
Prada Re nylon Top handle Crossbody Bag	3017	<u>19</u>
PRADA SML CANVAS BUCKET CROSSBODY BAG BROWN	3018	<u>20</u>
PRADA DOUBLE ZIP NYLON MESSENGER	3019	<u>21</u>
PRADA SAFFIANO MINI WOC BEIGE	3020	<u>22</u>
PRADA SAFFIANO MINI WOC BLACK	3021	<u>23</u>
PRADA MINI LEATHER GRAINED CAMERA BAG BLUE	3022	<u>24</u>
PRADA MINI LEATHER GRAINED CAMERA BAG PINK	3023	<u>25</u>
PRADA MINI LEATHER GRAINED CAMERA BAG RED	3024	<u>26</u>
PRADA MINI LEATHER GRAINED CAMERA BAG YELLOW	3025	<u>27</u>
PRADA NYLON CROSSBODY/TOTE BAG	3026	<u>28</u>
PRADA PRADA RE EDIT 2000 VELA MINI BAG	3027	<u>29</u>
PRADA NYLON SHOULDER BAG BLACK	3028	<u>30</u>
PRADA NYLON SHOPPER TOTE BAG BLACK	3029	<u>31</u>
PRADA NYLON SIDEBAG BLK	3030	<u>32</u>
PRADA RE-NYLON BACKPACK BLK	3031	<u>33</u>
PRADA SAFFIANO RE-EDITION LEATHER MINI BAG BLACK	3035	<u>34</u>
PRADA SAFFIANO RE-EDITION LEATHER MINI BAG PINK	3036	<u>35</u>
PRADA CLEO MINI BAG BLACK	3037	<u>36</u>
PRADA CLEO MINI BAG RED	3038	<u>37</u>
PRADA QUILTED SMALL TOTE BAG SABBIA	3039	<u>38</u>
PRADA QUILTED SMALL TOTE BAG BLACK	3040	<u>39</u>
PRADA QUILTED SMALL TOTE BAG WHITE	3041	<u>40</u>

Table of Contents

Product	Code	Page
PRADA SAFFIANO CUIR MESSENGER BAG BLK	3042	<u>41</u>
PRADA NYLON POCKET BELT BAG BLK	3043	<u>42</u>
PRADA NYLON BABY BAG BLK	3044	<u>43</u>
PRADA PRADA TESSUTO TOTE BLACK	3045	<u>44</u>
PRADA PLATE BUM BAG BLACK	3046	<u>45</u>
PRADA NYLON POCKET TOTE BAG BLACK	3047	<u>46</u>
PRADA EMBROIDERED FABRIC TOTE BAG NERO	3048	<u>47</u>
PRADA POUCH MESSENGER BAG BLK	3049	<u>48</u>
PRADA LEATHER SLING BAG	3050	<u>49</u>
PRADA RE-NYLON CROSSBODY TOTE BAG CELESTE	3052	<u>50</u>
PRADA RE-NYLON CROSSBODY TOTE BAG BLK	3053	<u>51</u>
Re-Nylon and Saffiano leather smartphone case	3054	<u>52</u>
PRADA MOON PADDED SHOULDER BAG black	3055	<u>53</u>
PRADA MOON PADDED SHOULDER BAG WHITE	3056	<u>54</u>
PRADA NYLON GYM BAG BLACK	3057	<u>55</u>
PRADA NYLON GYM BAG DESSERT	3058	<u>56</u>
PRADA MINI VELA NYLON BACKPACK BLK	3059	<u>57</u>
PRADA VELA NYLON BACKPACK BLK	3060	<u>58</u>
PRADA PRADA QLTD TOTE MEDIUM	3061	<u>59</u>
PRADA NYLON SAFFIANO CROSSBODY	3062	<u>60</u>
PRADA ANTIQUE LEATHER TOP HANDLE CROSSBODY BAG	3063	<u>61</u>
PRADA ANTIQUE LEATHER TOP HANDLE CROSSBODY BAG	3064	<u>62</u>
PRADA ANTIQUE LEATHER TOP HANDLE CROSSBODY BAG	3065	<u>63</u>
PRADA LARGE NAPPA TOTE BLACK	3066	<u>64</u>
PRADA PET BAG BLK	3067	<u>65</u>
PRADA SMALL BRUSHED LEATHER SUPERNOVA	3069	<u>66</u>
PRADA SMALL MESH SHOPPER BAG BLK	3070	<u>67</u>
PRADA MINI CRYSTAL BUCKET POUCH GLD	3072	<u>68</u>
PRADA RE-EDITION 1995 BRUSHED LEATHER MEDIUM	3075	<u>69</u>
Prada Logo Plaque Clutch Bag	3077	<u>70</u>
Prada women's pink antique nappa leather mini tote bag pink	3078	<u>71</u>
PRADA Flower-embossed foiled-logo leather wallet-on-chain	50630	<u>72</u>
PRADA Triangle mini leather pouch bag	50682	<u>73</u>
PRADA PRADA TESSUTO XBODY	50683	<u>74</u>
PRADA TRIANGLE CROSSBODY BAG	51251	<u>75</u>
PRADA PADDED RE-EDITION 2005 SHOULDER BAG BLK	51252	<u>76</u>
PRADA PADDED RE-EDITION 2005 SHOULDER BAG PINK	51253	<u>77</u>
PRADA PADDED RE-EDITION 2005 SHOULDER BAG NIN	51254	<u>78</u>
PRADA MINI SAFFIANO LEATHER GALLERIA BAG YELLOW	51255	<u>79</u>

Table of Contents

Product	Code	Page
PRADA MINI SAFFIANO LEATHER GALLERIA BAG BLK	51256	<u>80</u>
PRADA MINI SAFFIANO LEATHER GALLERIA BAG BLUE	51257	<u>81</u>
Re-Nylon and Saffiano leather smartphone case BLACK	51258	<u>82</u>
Re-Nylon and Saffiano leather smartphone case MILITARY	51259	<u>83</u>
PRADA SAFFIANO LEATHER SHOULDER BAG	51260	<u>84</u>
PRADA PRADA TESSUTO CROSSBODY FANNY PACK	51261	<u>85</u>
PRADA Duet Small Re-Nylon bucket bag BLLK	51262	<u>86</u>
PRADA Re-Nylon recycled-nylon shoulder bag	51263	<u>87</u>
Small Saffiano leather Prada Brique bag BLK	51264	<u>88</u>
PRADA LUXURY RE-EDITION 2005 SAFFIANO BAG BLK	51266	<u>89</u>
PRADA LUXURY RE-EDITION 2005 SAFFIANO BAG BEIGE	51267	<u>90</u>
Re-Nylon and Saffiano leather belt bag	51268	<u>91</u>
PRADA ZIP AROUND MINI BAG	51269	<u>92</u>
prada Re-Nylon pouch	52529	<u>93</u>
PRADA Padded Re-Nylon shoulder bag	52530	<u>94</u>
PRADA RE-NYLON CROSSBODY BAG	52531	<u>95</u>
PRADA RE-NYLON AND SAFFIANO SMARTPHONE CASE	52532	<u>96</u>
Re-Nylon Prada Re-Edition 2000 mini-bag	52533	<u>97</u>
PRADA Patent leather mini-bag	52534	<u>98</u>
PRADA DOUBLE WHEEL SNEAKERS ALABASTRO	50663	<u>99</u>
Monolith padded nappa leather sandals	50668	<u>100</u>
PRADA STRAPPY FLAT SANDALS	50677	<u>101</u>
PRADA STRAPPY FLAT SANDALS beige	50678	<u>102</u>
PRADA Embellished leather ballet flats	50688	<u>103</u>
PRADA LOGO D WHEEL SNEAKERS PINK	52302	<u>104</u>
PRADA QUILTED LOGO SNEAKERS	52303	<u>105</u>
PRADA LOGO LEATHER SNEAKERS	52304	<u>106</u>
PRADA PLAIN LEATHER SNEAKERS (WHITE BLACK, WHITE	52305	<u>107</u>
PRADA LOGO CLASSIC SNEAKERS	52306	<u>108</u>
PRADA SNEAKERS	52307	<u>109</u>
PRADA QUILTED CLASSIC SNEAKERS	52308	<u>110</u>
PRADA LOGO LEATHER MULES	52309	<u>111</u>
PRADA COLLAPSIBLE HEEL SLIP ONS	52310	<u>112</u>
PRADA LEATHER SLIP ONS	52311	<u>113</u>
PRADA LOGO SAF SLIDES (NAVY GREEN)	52312	<u>114</u>
PRADA NAPPA SLING BACKS	52313	<u>115</u>
PRADA NAPPA SLINGS	52314	<u>116</u>
PRADA PATENT SAF LOAFERS	52315	<u>117</u>
PRADA METALLIC SLIDES	52316	<u>118</u>

Table of Contents

Product	Code	Page
PRADA METALLIC KIT HEELS	52317	<u>119</u>
PRADA LOGO LEATHER QUILTED MULES	52318	<u>120</u>
PRADA CANV ESPADRILLES	52319	<u>121</u>
PRADA QULTED ESPADRILLES WHITE	52320	<u>122</u>
PRADA LOGO BLUE WHITE ESPADRILLES	52321	<u>123</u>
PRADA LOGO MESH ESPADRILLES	52322	<u>124</u>
PRADA EMB WEDGES	52323	<u>125</u>
PRADA LOGO WEDGE SANDALS	52324	<u>126</u>
PRADA LOGO CHUNKY SANDALS	52325	<u>127</u>
PRADA LADIES CHUNKY TREKKERS	52326	<u>128</u>
PRADA LEATHER BOW BALLET LATS	52327	<u>129</u>
PRADA LOGO METTALIC LEATHER BALLET FLATS	52328	<u>130</u>
PRADA LOGO TIPPED HEELED SANDALS (WHITE SILVER)	52424	<u>131</u>
PRADA LOGO TIPPED HEELED SANDALS BLK	52425	<u>132</u>
PRADA LOGO TIPPED MULES SILVER	52426	<u>133</u>
PRADA LOGO HIGH TOPS BLK	52427	<u>134</u>
PRADA LOGO HIGH TOPS WHITE LEATHER	52428	<u>135</u>
Prada logo nylon chunky sole sneakers (BLACK WHITE)	52429	<u>136</u>
PRADA LOGO NYLON SNAKERS BLK	52430	<u>137</u>
PRADA LOGO RUBBER LEATHERS SANDALS (WHITE PALE	52431	<u>138</u>
PRADA LOGO ST SLIDES (PINK BLUE WHITE)	52432	<u>139</u>
PRADA LOGO BLOCK HEELS PATENT BLACK	52433	<u>140</u>
PRADA LOGO PATENT LEATHER PUMPS (NUDE BLK)	52434	<u>141</u>
PRADA CHUNKY PLATFORM SANDALS (WHITE BEIGE BLACK)	52435	<u>142</u>
PRADA LOGO SNEAKERS WHITE BLUE MENS	52436	<u>143</u>
PRADA DOWNTOWN SNEAKERS WHITE PURPLE MENS	52437	<u>144</u>
PRADA PLAIN TENNIS SHOES WHITE BLACK MENS	52438	<u>145</u>
PRADA TENNIS SHOES (BLACK TAB OR WHITE TAB) MENS	52439	<u>146</u>
PRADA TECH NYLON SNEAKERS O(NAVY OR BLACK) MENS	52440	<u>147</u>
PRADA LEATHER SNEAKERS BLACK MENS	52441	<u>148</u>
PRADA LEATHER SNEAKERS WHITE WHITE MENS	52442	<u>149</u>
PRADA LEATHER SNEAKERS WHITE NVY MENS	52443	<u>150</u>
PRADA CAMO NYLON SNEAKERS MENS	52444	<u>151</u>
PRADA NAVY SNEAKERS MENS	52445	<u>152</u>
PRADA CLASSIC LEATHER SNEAKER (WHITYE OR NAVY)	52446	<u>153</u>
PRADA PRADA LEATHER SNEAKERS WHITE BLACK MENS	52447	<u>154</u>
PRADA PRADA LEATHER SNEAKERS BLK MENS	52448	<u>155</u>
PRADA PRADA LEATHER SNEAKERS NAVY MENS	52449	<u>156</u>
PRADA TECH SNEAKERS BLK MENS	52450	<u>157</u>

Table of Contents

Product	Code	Page
PRADA Flat nappa leather sandals	52535	<u>158</u>
PRADA SAFFIANO MULTI SLOT CARDHOLDER BEIGE	3112	<u>160</u>
PRADA COIN PURSE/CARDHOLDER LIGHT PINK	3118	<u>162</u>



Prada Quilted re-nylon shoulder bag

62,000



DETACHABLE STRAP

PRADA CANVAS CROSSBODY/TOTE BROWN
62,000



PRADA CANVAS CROSSBODY/TOTE BLK

62,000



PRADA NYLON DOUBLE POCKET SACHEL

82,000



PRADA NYLON SATCHEL

72,000



PRADA NYLON CAMERA BAG

63,000



PRADA MINI LEATHER POUCH

20,000



PRADA MINI LEATHER DOMED POUCH
20,000



PRADA LEATHER DOMED POUCH BROWN
20,000



PRADA LEATHER CROSSBODY HOBO BLK
75,000



PRADA LEATHER CROSSBODY HOBO HOT PINK

75,000



PRADA NYLON TOP HANDLE MEDIUM
CROSSBODY

68,000



PRADA NYLON BACKPACK RED

75,000



PRADA NYLON CROSSBODY TRUNK

69,000



PRADA NYLON BACKPACK BLACK

78,000



PRADA SMALL NYLON DOME CROSSBODY

72,000



PRADA SML CANVAS BUCKET CROSSBODY BAG
BLACK

56,000



Come with detachable
Crossbody strap.

Prada Re nylon Top handle Crossbody Bag
62,000



PRADA SML CANVAS BUCKET CROSSBODY BAG
BROWN

56,000



PRADA DOUBLE ZIP NYLON MESSENGER

53,000



PRADA SAFFIANO MINI WOC BEIGE

67,000



PRADA SAFFIANO MINI WOC BLACK

67,000



PRADA MINI LEATHER GRAINED CAMERA BAG
BLUE

52,000



PRADA MINI LEATHER GRAINED CAMERA BAG
PINK

52,000



PRADA MINI LEATHER GRAINED CAMERA BAG
RED

52,000



PRADA MINI LEATHER GRAINED CAMERA BAG
YELLOW

52,000



PRADA NYLON CROSSBODY/TOTE BAG

72,000

Produced from high profile Nylon, adorned with a block colour finish and Saffiano Leather trim for added quality. Featuring a contemporary fabrication mix, the bag styles a main zip closure, woven shoulder strap and is finished with the iconic Prada emblem to the front and tag for instant brand recognition. Supplied in premium packaging and a high end gift box. H 17cm x W 22cm.



PRADA PRADA RE EDIT 2000 VELA MINI BAG

59,000



- Adjustable 95 cm woven tape shoulder strap
- Re-Nylon detachable zipper pouch
- Zipper pocket
- Metal hardware
- Enameled metal triangle logo on the front
- Zipper closure
- Re-Nylon logo-print lining with zipper pocket
- Height: 15cm
- Width: 23cm
- Length: 7cm

PRADA NYLON SHOULDER BAG BLACK

89,000



The design incorporates the iconic triangle Prada logo, as well as a front pouch pocket. The main compartment features a zip fastening, a zip-closed pocket and a magnetic fastened pocket to ensure all your valuables are kept safe.

- Saffiano leather handles
- Pocket with magnet closure
- Metal hardware
- Enameled metal triangle logo on the front
- Zipper closure
- Re-Nylon logo-print lining with two pockets, including one with zipper
- Height: 29cm
- Width: 35cm
- Length: 15.5cm



PRADA NYLON SHOPPER TOTE BAG BLACK

69,500



Crafted with a nylon upper, this piece boasts two zip closure compartments. Complete with an adjustable woven strap, this bag is finished with the signature Prada logo to the front. H17 x W23 x D7cm



PRADA NYLON SIDEBAG BLK
64,000



The design features dual zip opening to the main compartment and zip front pocket, with the enameled Prada logo adds embellishment, and there are multiple, practical pockets inside and out enhanced with logo lining. Dimensions: H:35cm x W:25cm x D:16cm



PRADA RE-NYLON BACKPACK BLK
119,000



Saffiano Re-Edition Leather Mini Bag is a cult staple accessory renowned to the brand's archival heritage. Styled in a mini hobo silhouette, this grab bag has been crafted from a premium Saffiano leather defined with a crosshatch texture for a high-end aesthetic while the jet black finish provides a clean finish. Adorned with gold-toned hardware throughout, this bag offers a top zip fastening opening up to reveal the nylon lined main compartment while the double shoulder strap allows for styling day-to-evening. The look is signed off with the brand's signature enameled metal triangle logo embellished to the front for a designer stamp. Dimensions: H 18cm x W 22cm x D 6cm

PRADA SAFFIANO RE-EDITION LEATHER MINI BAG BLACK

99,500



Saffiano Re-Edition Leather Mini Bag is a cult staple accessory renowned for the brand's archival heritage. Styled in a mini hobo silhouette, this grab bag has been crafted from a premium Saffiano leather defined with a crosshatch texture for a high-end aesthetic while the jet black finish provides a clean finish. Adorned with gold-toned hardware throughout, this bag offers a top zip fastening opening up to reveal the nylon lined main compartment while the double shoulder strap allows for styling day-to-evening. The look is signed off with the brand's signature enameled metal triangle logo embellished to the front for a designer stamp. Dimensions: H 18cm x W 22cm x D 6cm

PRADA SAFFIANO RE-EDITION LEATHER MINI BAG PINK

99,500



Crafted from a smooth leather construction, this bag features sleek curved lines, a main button fastening, an adjustable shoulder strap and silver toned hardware for a lux feel. The look is finished with the signature Prada triangle sewn to the front for brand recognition. H: 14.5cm x W: 17cm x D: 3cm.



PRADA CLEO MINI BAG BLACK
125,000



Crafted from a smooth leather construction, this bag features sleek curved lines, a main button fastening, an adjustable shoulder strap and silver toned hardware for a lux feel. The look is finished with the signature Prada triangle sewn to the front for brand recognition. H: 14.5cm x W: 17cm x D: 3cm.



PRADA CLEO MINI BAG RED
125,000



Crafted solely from luxurious leather, this classic silhouette features double top handles as well as a detachable shoulder strap with gold-toned metal hardware while the large central compartment offers a rear zipped pocket and front slip pouch. Decorated in a minimalist colourway, the design is enhanced with an embossed triangular pattern to the outside, finished with the iconic Prada crest in metal hardware to the front and to the removal leather key chain. Luxury dust bag included. Dimensions: W: 25 x H: 27.5 x D: 11.5 cm.



PRADA QUILTED SMALL TOTE BAG SABBIA

159,000



Crafted solely from luxurious leather, this classic silhouette features double top handles as well as a detachable shoulder strap with gold-toned metal hardware while the large central compartment offers a rear zipped pocket and front slip pouch. Decorated in a minimalist colourway, the design is enhanced with an embossed triangular pattern to the outside, finished with the iconic Prada crest in metal hardware to the front and to the removal leather key chain. Luxury dust bag included. Dimensions: W: 25 x H: 27.5 x D: 11.5 cm.



PRADA QUILTED SMALL TOTE BAG BLACK

159,000



Crafted solely from luxurious leather, this classic silhouette features double top handles as well as a detachable shoulder strap with gold-toned metal hardware while the large central compartment offers a rear zipped pocket and front slip pouch. Decorated in a minimalist colourway, the design is enhanced with an embossed triangular pattern to the outside, finished with the iconic Prada crest in metal hardware to the front and to the removal leather key chain. Luxury dust bag included. Dimensions: W: 25 x H: 27.5 x D: 11.5 cm.

PRADA QUILTED SMALL TOTE BAG WHITE

159,000



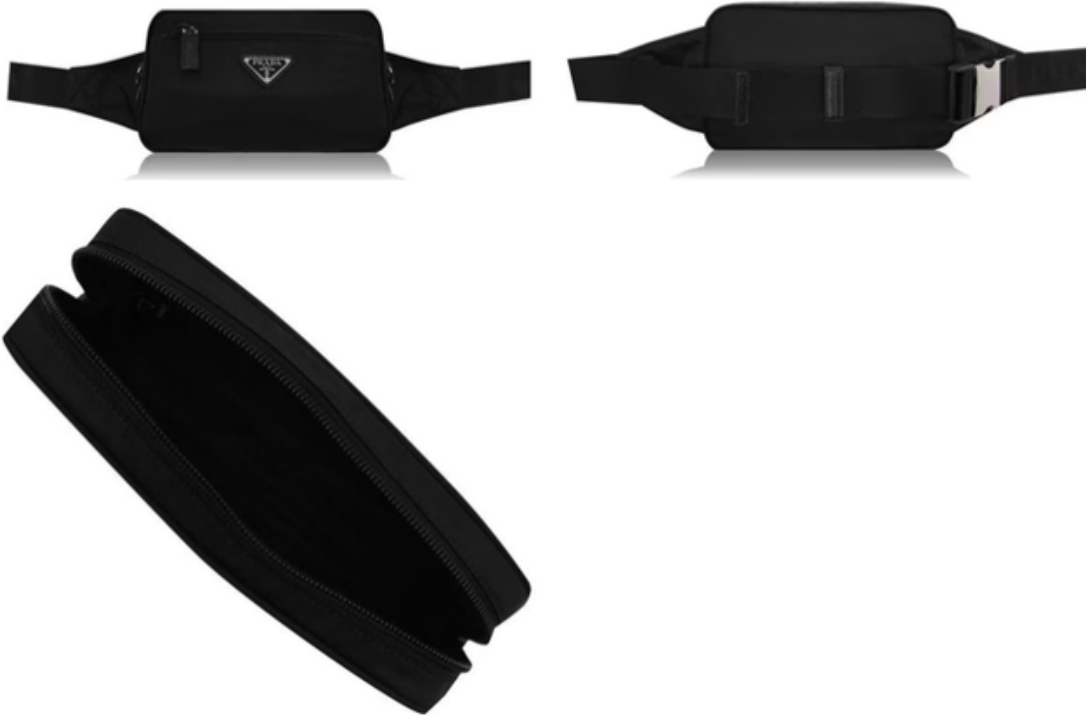
- Detachable, adjustable shoulder strap in embroidered webbing and leather
- Front embossed logo and back enameled-metal triangle
- Zipper closure
- One external pocket
- Interior with patch pocket
- Re-Nylon logo lining
- Height: 19cm
- Width: 16cm
- Length: 5.5cm



PRADA SAFFIANO CUIR MESSENGER BAG BLK

102,000

this belt bag features a front zipped pocket to keep your essentials organised and an adjustable strap for the perfect fit. The minimalist design makes this bag super easy to style with your ensemble and the enamelled Prada badge to the front completes the high end aesthetic. H: 12.5cm x W: 21cm x D: 4cm



PRADA NYLON POCKET BELT BAG BLK
66,000



This Nylon Baby Bag from Prada is favoured amongst celebrity parents. This design has tonal woven handles, detachable and adjustable shoulder strap, two open pockets, zipped front pouch, zipped back pocket and main zipped pocket for organisation and plenty of internal storage. This baby bag is perfect for all parenting needs, the look is complete with Prada branding throughout.

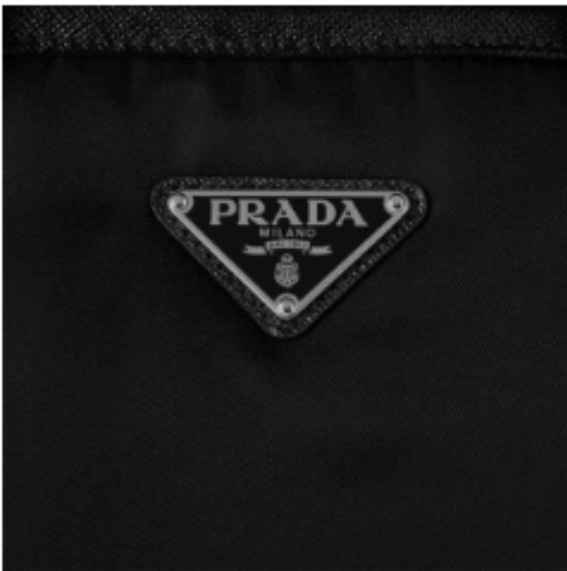


- Height 28cm-11"
- Min. width 36cm-14"
- Max. width 48cm-19"

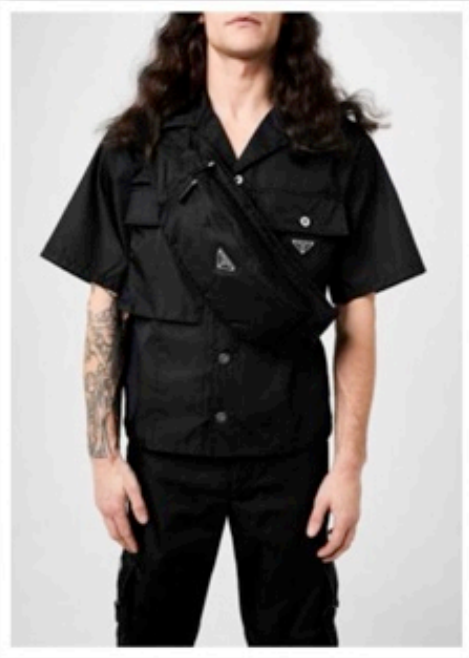
PRADA NYLON BABY BAG BLK

107,000

- Width 18.5in/47cm
- Length 14.2in/36cm
- Depth 6.7in/17cm
- Handle drop length 9.8in/25cm



PRADA PRADA TESSUTO TOTE BLACK
110,000



PRADA PLATE BUM BAG BLACK

49,000



Designed with multiple pockets for safe storage, this sleek tote bag combines style with functionality. The detachable, adjustable shoulder strap helps to keep you hands-free with the double grab handles being there when you need them. The simplistic style emphasises the branded to the front for a bold designer statement that completes the look. H: 34cm x W: 36cm x D: 8cm

PRADA NYLON POCKET TOTE BAG BLACK

89,900



Crafted from a fabric and leather composition, this classic silhouette has been re-imaged with a geometric triangle design which tributes the brand. This piece is adorned with gold detailing with an internal zip fastening, fabric handles, an internal slip pocket, a re-nylon lining, and a removable leather key chain. This design is finished with the enamelled metal Prada logo which gives this bag a luxurious designer finish.

Dimensions:
H32cm X L13cm



PRADA EMBROIDERED FABRIC TOTE BAG NERO
165,000

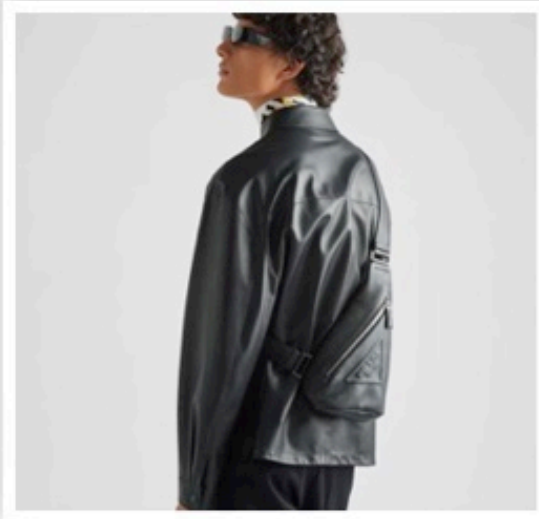


Crafted with main zipped compartment and additional slip pocket to the front with zip detailing and leather trim, all whilst also including a grosgrain shoulder strap with added detachable pouch - for extra styling and convenience. Both are finished with iconic metal Prada badge to complete the look.



PRADA POUCH MESSENGER BAG BLK

84,000



- Height 37cm-14.5"
- Max. width 25cm-10"
- Depth 8cm-3"
- Adjustable shoulder strap
- Min. length shoulder strap 70cm-27.5"
- Max. length shoulder strap 100cm-39.5"
- crafted from premium grained leather construction with a zip fastening main compartment along with an additional internal slip pocket that provides ample space for your essentials, an adjustable shoulder strap allows for comfortable transportation, finished off with the classic Prada logo to the front for instant brand appeal.

PRADA LEATHER SLING BAG

89,000



Crafted in a colour-block fabrication, this classic tote bag is produced from a Nylon fabrication adorning a front zip pocket, canvas grab handles with Leather accents, detachable canvas cross-body strap, zipped fastening, zip interior pocket and silver-tone hardware. Complete with the iconic Prada triangle emblem to the front. Dust bag included. H 22cm x W 30cm x D 11cm.

PRADA RE-NYLON CROSSBODY TOTE BAG
CELESTE

69,500

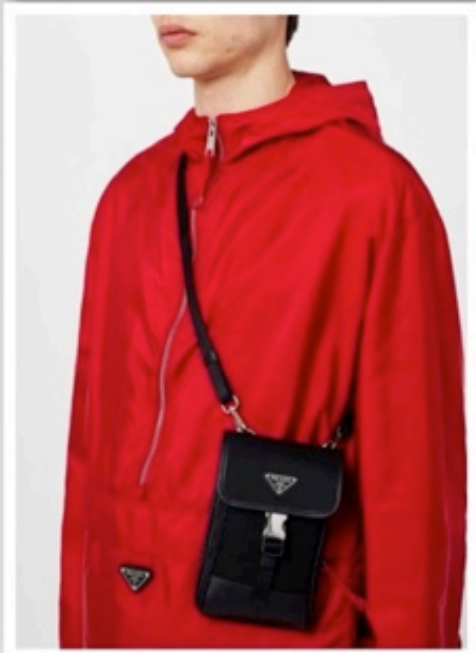


Crafted in a colour-block fabrication, this classic tote bag is produced from a Nylon fabrication adorning a front zip pocket, canvas grab handles with Leather accents, detachable canvas cross-body strap, zipped fastening, zip interior pocket and silver-tone hardware. Complete with the iconic Prada triangle emblem to the front. Dust bag included. H 22cm x W 30cm x D 11cm.

PRADA RE-NYLON CROSSBODY TOTE BAG BLK

69,500

Width: 12.5cm, Length:
18.5cm



Re-Nylon and Saffiano leather smartphone case

53,000



Dimensions: 16 x
22.5 x 7.5 cm.
NAPPA LEATHER



PRADA MOON PADDED SHOULDER BAG black

123,000



Dimensions: 16 x
22.5 x 7.5 cm.
NAPPA LEATHER



PRADA MOON PADDED SHOULDER BAG WHITE

123,000



Designed with two grosgrain handles to the top that are reinforced with leather handles, one main zipped compartment with an extra internal zip pocket as well as having a zipped pocket to the outside for an ergonomic use of storage space. Dimensions: H: 45 cm x W: 22 cm x D: 30 cm.



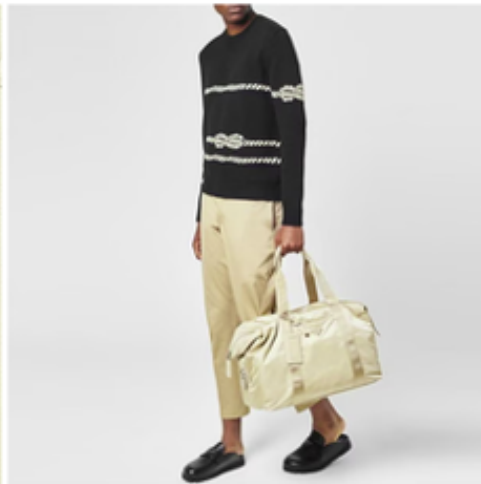
PRADA NYLON GYM BAG BLACK

98,000



Designed with two grosgrain handles to the top that are reinforced with leather handles, one main zipped compartment with an extra internal zip pocket as well as having a zipped pocket to the outside for an ergonomic use of storage space.

Dimensions: H: 45 cm x W: 22 cm x D: 30 cm.



PRADA NYLON GYM BAG DESSERT

73,000



- Leather handle
- Removable 105 cm chain shoulder strap
- Front flap pockets with buckle closure
- Metal hardware
- Enameled metal triangle logo on the flap
- Drawstring, flap and buckle closure
- Re-nylon logo print lining
- Height: 18.5cm
- Width: 17cm
- Length: 8cm



PRADA MINI VELA NYLON BACKPACK BLK

85,000



- Height 31cm-12"
- Width 30cm-12"
- Depth 15cm-6"
- Min. length shoulder strap 53cm-21"
- Max. length shoulder strap 87cm-34.5"
- Clutch height 9cm-3.5"
- Clutch width 18,5cm-7.5"



PRADA VELA NYLON BACKPACK BLK

108,000



PRADA PRADA QLTD TOTE MEDIUM
167,000



- Height 19cm-7.5"
- Width 14cm-5.5"
- Depth 6cm-2.5"
- Min. length shoulder strap 100cm-39.5"
- Max. length shoulder strap 142cm-56"



PRADA NYLON SAFFIANO CROSSBODY

69,500



This bag with casual, classic allure is made of glossy nappa leather with a natural finish. The handmade wrinkled effect contrasts with the concept of a rigid construction, reinterpreting an everyday object that can be worn without constraints. Presented for the Spring Summer 2023 collection, the accessory that is a re-edition of a bag presented in 2001 is decorated with the enameled metal triangle logo.

- Handmade wrinkled effect

PRADA ANTIQUE LEATHER TOP HANDLE
CROSSBODY BAG PINK

172,000



This bag with casual, classic allure is made of glossy nappa leather with a natural finish. The handmade wrinkled effect contrasts with the concept of a rigid construction, reinterpreting an everyday object that can be worn without constraints. Presented for the Spring Summer 2023 collection, the accessory that is a re-edition of a bag presented in 2001 is decorated with the enameled metal triangle logo.

- Handmade wrinkled effect

PRADA ANTIQUE LEATHER TOP HANDLE
CROSSBODY BAG GREY

172,000



This bag with casual, classic allure is made of glossy nappa leather with a natural finish. The handmade wrinkled effect contrasts with the concept of a rigid construction, reinterpreting an everyday object that can be worn without constraints. Presented for the Spring Summer 2023 collection, the accessory that is a re-edition of a bag presented in 2001 is decorated with the enameled metal triangle logo.

- Handmade wrinkled effect

PRADA ANTIQUE LEATHER TOP HANDLE
CROSSBODY BAG BLACK

172,000



This bag with casual, everyday allure is made of glossy nappa leather with a natural finish. The handmade wrinkled effect contrasts with the concept of a rigid construction, reinterpreting an everyday object that can be worn without constraints. Presented for the Spring Summer 2023 collection, the accessory is decorated with the enameled metal triangle logo.

- Wrinkled effect motif
- Nappa leather handles
- Metal hardware
- Enameled metal triangle logo on the front
- Nappa leather lining with two zipper pockets
- Height: 31cm
- Width: 39cm
- Length: 10cm



PRADA LARGE NAPPA TOTE BLACK

164,000

20 X 30 X 17 CM
STRAP 65CM

Spoil your beloved pets with this Pet Bag from Prada. Crafted from premium saffiano leather and recycled nylon, this eye-catching design has everything one needs for caring for their faithful companions. Featuring a front zipped pocket, a large central compartment with mesh sides, silver toned hardware, adjustable nylon handles, a water dish and separate pouch for your rubbish bags- this is the ultimate in premium pet luxury. Decorated in a solid colour throughout, the design is completed with the iconic Prada enamelled logo to the front for a truly high end completion.



PRADA PET BAG BLK
125,000



- Leather handles
- Detachable, adjustable 105 cm leather shoulder strap
- Metal hardware
- Printed lettering logo on front and enameled metal triangle logo on the zipper
- Zipper closure
- Nappa leather lining
- Height: 18cm
- Width: 25.5cm
- Length: 13.5cm

PRADA SMALL BRUSHED LEATHER SUPERNOVA
CROSSBODY HANDBAG PINK

85,000



Crafted from a sheer mesh fabrication, this structured silhouette has been designed with a high visual impact design adorned with the iconic tonal triangle logo plaque to the front for an instantly recognisable look. With one main compartment and removable inner zipped pouch secured to the patent leather edges, this piece is perfect to use on-the-go and carry with the two top grab handles. Outer:
Polyurethane 100%, Patent Leather 100%. H

PRADA SMALL MESH SHOPPER BAG BLK
63,000



W 7 H 9 D 5CM
STRAP 52CM



PRADA MINI CRYSTAL BUCKET POUCH GLD

72,000



crafted from a luxe leather boasting an elegant geometric shape with minimal lines for a structured silhouette. With two main compartments separated with one large zipped pocket, this practical yet formal accessory offers two top handles allowing you to wear over the shoulder or carry handheld. The look is complete with the brands iconic silver screen-printed logo lettering adorned to the front complete with a detachable Prada Re-Edition 1995

PRADA RE-EDITION 1995 BRUSHED LEATHER MEDIUM HANDBAG BLACK

144,000



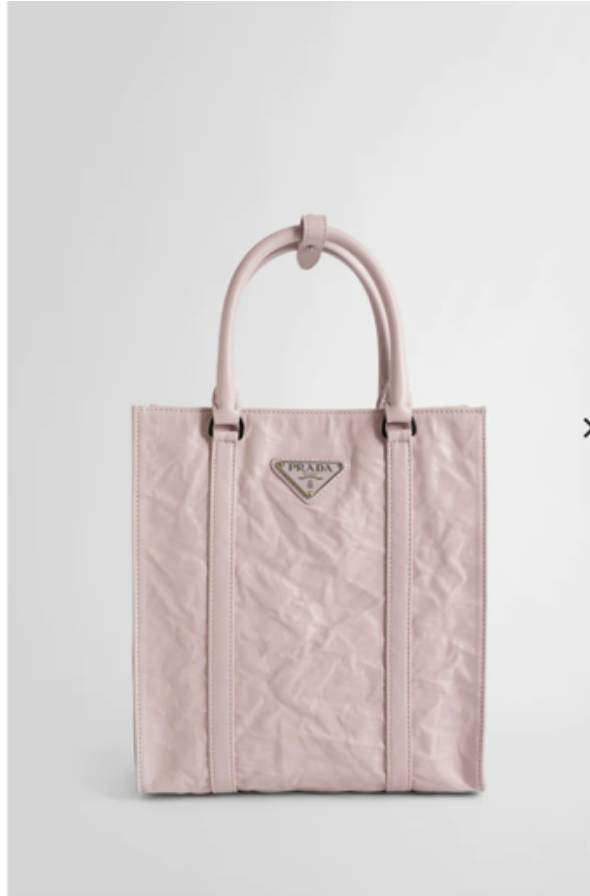
- Prada leather pouch bag
- 100% leather
- Flap-over with magnetic button closure
- Envelope design, detachable chain strap, detachable wristlet strap, brand metal plaque at front, one main compartment, internal zip compartment, grain texture, gold-toned hardware
- Height 13cm, width 20.5cm, depth 2.5cm



Prada Logo Plaque Clutch Bag

73,000

- Pink
- Antique nappa leather
- Wrinkled effect
- Front metal logo plaque
- Top handles
- Adjustable and removable shoulder strap
- Internal zipped pocket
- 100% leather
- Made in Italy

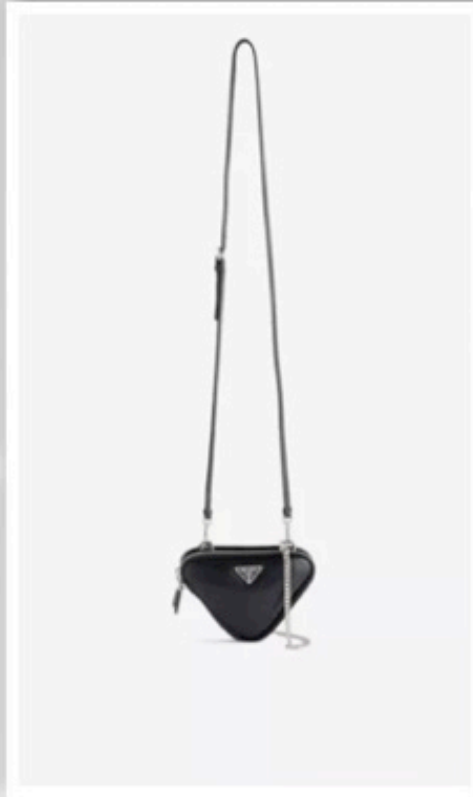


Prada women's pink antique nappa leather mini tote bag pink
125,000



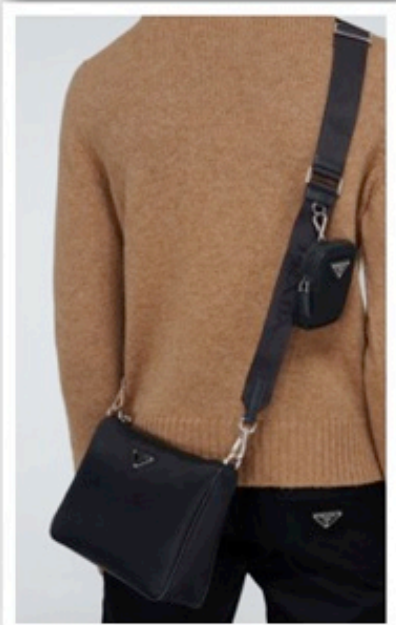
- Prada leather wallet-on-chain
- 100% calf leather
- Magnetic fastening
- Rectangular shape, detachable adjustable strap, foiled branding at flap front, all over embossed flower pattern, all over smooth leather, gold-toned hardware, one main compartment, internal slip pocket and foiled branding, fully lined
- Height 8cm, width 11cm, depth 3cm, strap length 121cm, strap drop 58cm
- Presented in a box

PRADA Flower-embossed foiled-logo leather wallet-on-chain
49,000



- Prada leather pouch bag
- 100% leather
- Triangle shape, detachable adjustable strap, two buttoned pouches, brand triangle plaque at front, foiled branding at back, all-over smooth leather, silver-toned hardware, two main compartments, foiled branding at interiors, fully lined
- Exposed zip fastening
- Height 11cm, width 15cm, depth 1cm
- Specialist leather clean
- Made in Italy
- Presented in a box

PRADA Triangle mini leather pouch bag
58,000



This black crossbody bag from Prada is made from technical nylon featuring a zipped top fastening, leather trims and a miniature pocket on the strap.

- Closure: zipped top
- Color of fastening: silver
- Color of strap: black
- Comes with dust bag
- Internal details: fabric lining
- Made in Italy
- Material: fabric, leather
- Adjustable shoulder strap, Detachable shoulder strap

- Height 17,5cm-7"
- Width 25cm-10"
- Min. depth 3,5cm-1.5"
- Max. depth 7cm-3"
- Pendant length 10,5cm-4"
- Pendant width 7,5cm-3"
- Min. length shoulder strap 99cm-39"
- Max. length shoulder strap 145cm-57"

PRADA PRADA TESSUTO XBODY

85,000



Made from supple calf leather in Italy, this black iteration of Prada's Triangle bag honours the significance of the geometric shape for the maison. Emblazoned with an enamel logo plaque at the front, this accessory benefits from an adjustable strap that allows it to be worn in multiple ways.

Highlights

- black
- calf leather
- triangle shape
- silver-tone hardware
- adjustable shoulder strap
- enamel triangle logo
- top zip fastening

PRADA TRIANGLE CROSSBODY BAG

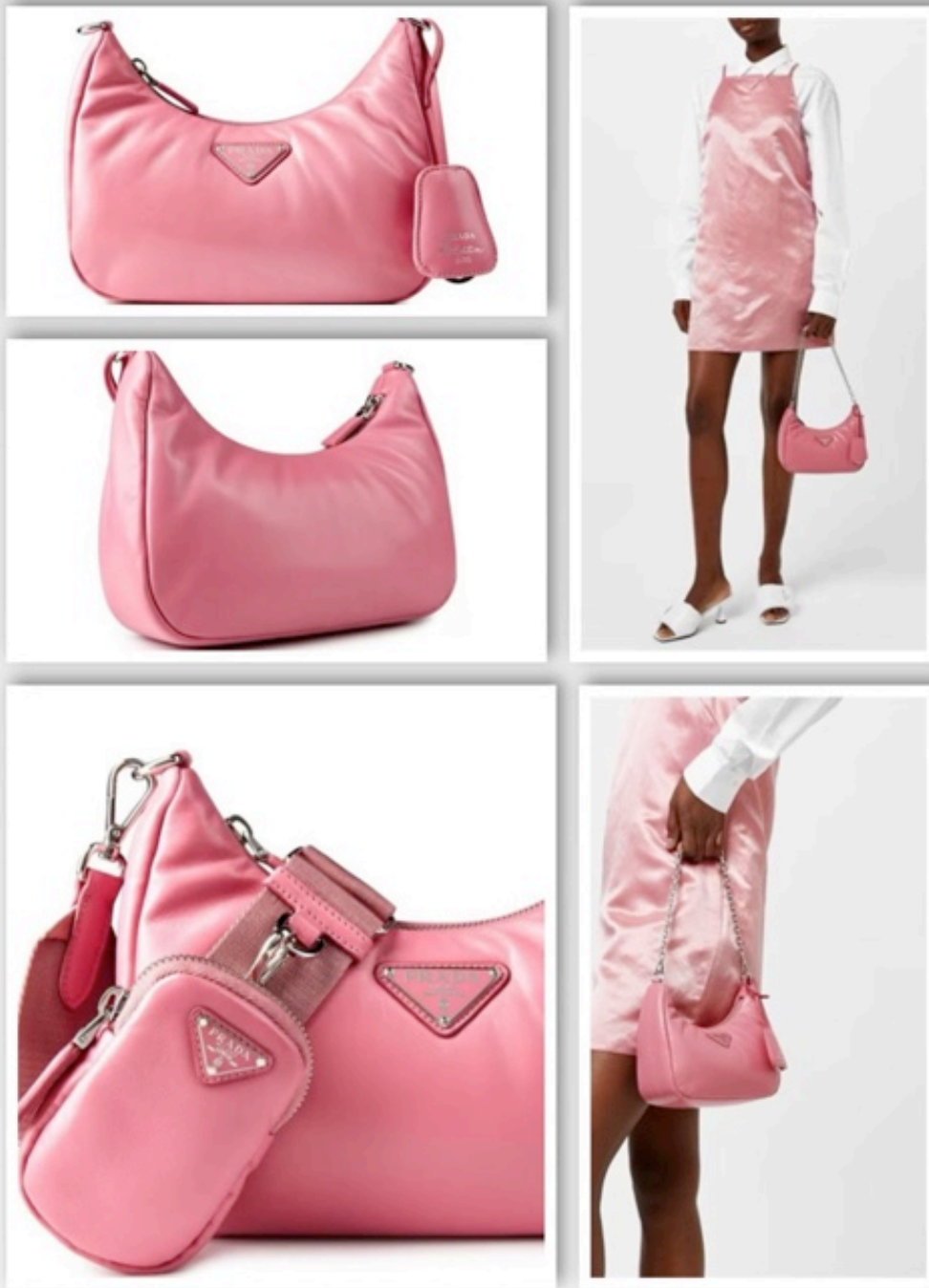
92,000



This striking Padded Re-Edition 2005 Shoulder Bag is a contemporary reimagining of a classic 00s silhouette, reconceptualised in the finest Italian nappa leather. Detachable and adjustable chain-link and webbing shoulder straps offer variety, allowing you to customise and wear this piece how you see fit. A zip fastening across the curved top pulls back to reveal a spacious central compartment accompanied by a removable external pouch that provides ample space for your on-the-go essentials and imparts a utilitarian feel. A detachable key ring, light padding and discreet tone-on-tone topstitching complete the construction. The solid block colouring delivers an exceptional foundation to style this piece into any ensemble, making this a versatile addition to your wardrobe. Of course, no Prada design is complete without the label's signature triangular Symbole motif, proudly presented on the front of the bag, ensuring immediate brand appreciation and luxe appeal. Dimensions: 18 x 22 x 6 centimetres.

PRADA PADDED RE-EDITION 2005 SHOULDER BAG BLK

119,000



This striking Padded Re-Edition 2005 Shoulder Bag is a contemporary reimagining of a classic 00s silhouette, reconceptualised in the finest Italian nappa leather. Detachable and adjustable chain-link and webbing shoulder straps offer variety, allowing you to customise and wear this piece how you see fit. A zip fastening across the curved top pulls back to reveal a spacious central compartment accompanied by a removable external pouch that provides ample space for your on-the-go essentials and imparts a utilitarian feel. A detachable key ring, light padding and discreet tone-on-tone topstitching complete the construction. The solid block colouring delivers an exceptional foundation to style this piece into any ensemble, making this a versatile addition to your wardrobe. Of course, no Prada design is complete without the label's signature triangular Symbole motif, proudly presented on the front of the bag, ensuring immediate brand appreciation and luxe appeal. Dimensions: 18 x 22 x 6 centimetres.

PRADA PADDED RE-EDITION 2005 SHOULDER BAG PINK

111,000

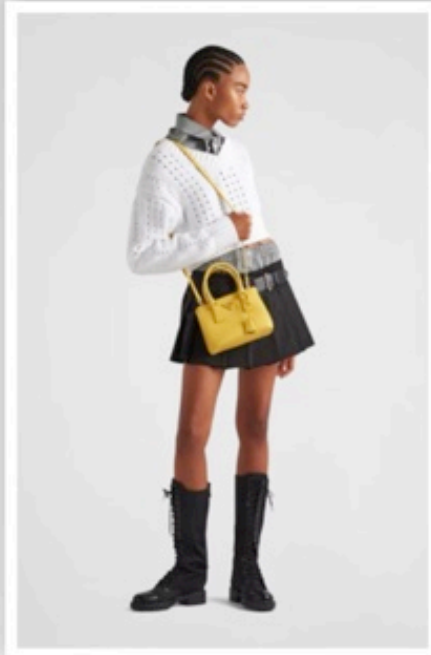


This striking Padded Re-Edition 2005 Shoulder Bag is a contemporary reimagining of a classic 00s silhouette, reconceptualised in the finest Italian nappa leather. Detachable and adjustable chain-link and webbing shoulder straps offer variety, allowing you to customise and wear this piece how you see fit. A zip fastening across the curved top pulls back to reveal a spacious central compartment accompanied by a removable external pouch that provides ample space for your on-the-go essentials and imparts a utilitarian feel. A detachable key ring, light padding and discreet tone-on-tone topstitching complete the construction.

The solid block colouring delivers an exceptional foundation to style this piece into any ensemble, making this a versatile addition to your wardrobe. Of course, no Prada design is complete without the label's signature triangular Symbole motif, proudly presented on the front of the bag, ensuring immediate brand appreciation and luxe appeal. Dimensions: 18 x 22 x 6 centimetres.

PRADA PADDED RE-EDITION 2005 SHOULDER BAG NIN

111,000

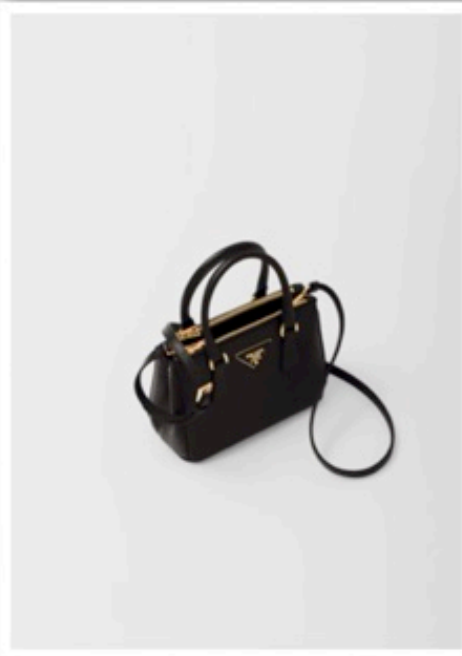
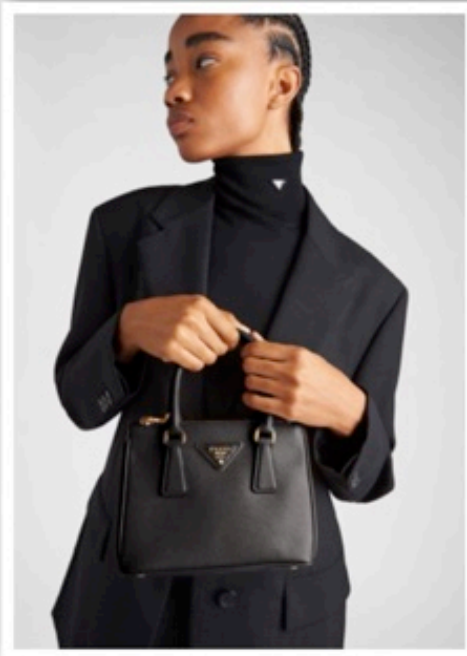
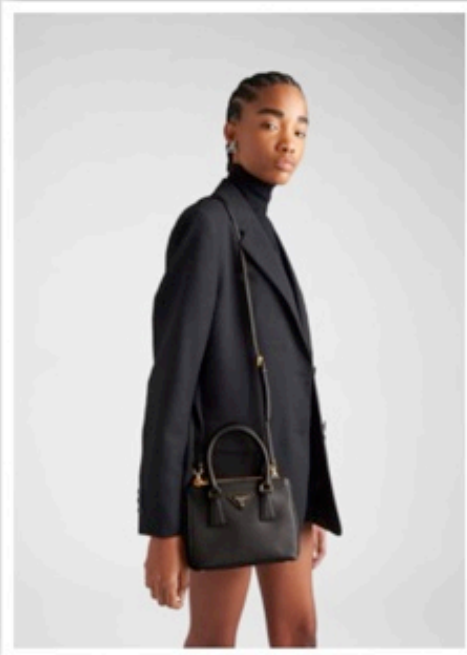


- Leather handles
- Detachable, adjustable leather shoulder strap. Max. length: 120 cm - Min. length: 110 cm - Max. drop length: 60 cm - Min. drop length: 55 cm
- Removable leather key ring
- External zipper pockets
- Metal hardware
- Leather triangle with metal lettering logo on the front
- Snap closure on the sides
- Logo-print nylon lining
- Two internal pockets, including one with zipper
- With purse feet
- Height: 14cm
- Width: 20cm
- Length: 9cm

Material s and care

PRADA MINI SAFFIANO LEATHER GALLERIA BAG
YELLOW

119,000



- Leather handles
- Detachable, adjustable leather shoulder strap. Max. length: 120 cm - Min. length: 110 cm - Max. drop length: 60 cm - Min. drop length: 55 cm
- Removable leather key ring
- External zipper pockets
- Metal hardware
- Leather triangle with metal lettering logo on the front
- Snap closure on the sides
- Logo-print nylon lining with two pockets, including one with zipper
- With purse feet
- Height: 14cm
- Width: 20cm
- Length: 9cm

Material s and care

PRADA MINI SAFFIANO LEATHER GALLERIA BAG
BLK

159,000

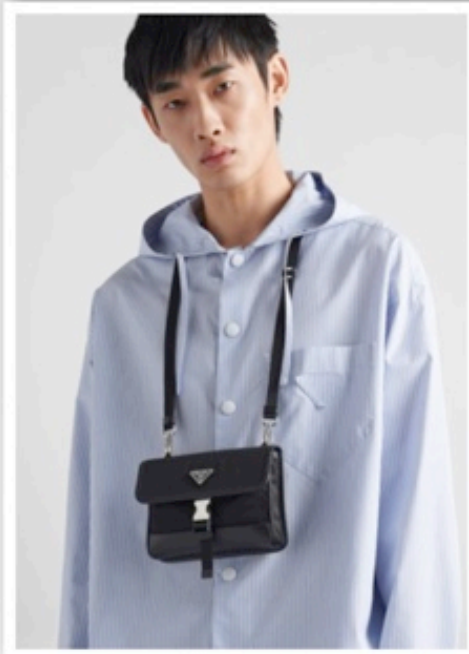
- Leather handles
- Detachable, adjustable leather shoulder strap. Max. length: 120 cm - Min. length: 110 cm - Max. drop length: 60 cm - Min. drop length: 55 cm
- Removable leather key ring
- External zipper pockets
- Metal hardware
- Leather triangle with metal lettering logo on the front
- Snap closure on the sides
- Logo-print nylon lining with two pockets, including one with zipper
- With purse feet
- Height: 14cm
- Width: 20cm
- Length: 9cm

Material s and care



PRADA MINI SAFFIANO LEATHER GALLERIA BAG
BLUE

119,000



This smartphone case, which can be worn around the neck thanks to its adjustable strap, combines Prada's iconic Saffiano leather with Re-Nylon, a regenerated nylon yarn produced through a process of recycling and purifying plastics recovered from the ocean, as well as fishing nets and textile fibers. The accessory is decorated with the enameled triangle logo, striking a balance between modern and traditional.

- Product code: 2ZH108_2DMH_F0002
- Push-lock clasp
- Enameled metal triangle logo
- One card slot
- Detachable, adjustable woven nylon shoulder strap
- Height: 12cm
- Width: 18cm
- Length: 2cm

Re-Nylon and Saffiano leather smartphone case
BLACK

54,000



This smartphone case, which can be worn around the neck thanks to its adjustable strap, combines Prada's iconic Saffiano leather with Re-Nylon, a regenerated nylon yarn produced through a process of recycling and purifying plastics recovered from the ocean, as well as fishing nets and textile fibers. The accessory is decorated with the enameled triangle logo, striking a balance between modern and traditional.

- Product code: 2ZH108_2DMH_F0002
- Push-lock clasp
- Enameled metal triangle logo
- One card slot
- Detachable, adjustable woven nylon shoulder strap
- Height: 12cm
- Width: 18cm
- Length: 2cm

Re-Nylon and Saffiano leather smartphone case
MILITARY GREEN

54,000



PRADA SAFFIANO LEATHER SHOULDER BAG

113,000



- Black
- Brushed leather
- Front enamelled metal triangle logo
- Zip closure
- Front zippered pocket
- Adjustable logo jacquard webbing belt with hook closure
- Back pocket
- 100% calfskin
- Made in Italy

Height 13 cm
Width 21 cm



PRADA PRADA TESSUTO CROSSBODY FANNY
PACK

87,000



- Height 22,5cm-9"
- Width 17,5cm-7"
- Depth 11cm-4.5"
- Min. length shoulder strap 120cm-47"
- Max. length shoulder strap 136cm-53.5"

PRADA Duet Small Re-Nylon bucket bag BLLK

73,000



- Prada recycled-nylon shoulder bag
- 100% recycled nylon
- Zip fastening
- Adjustable shoulder strap, gold-toned hardware, branded keychain, brand plaque
- Height 10cm, width 23cm, length 5cm
- Wipe with a clean, dry cloth

PRADA Re-Nylon recycled-nylon shoulder bag

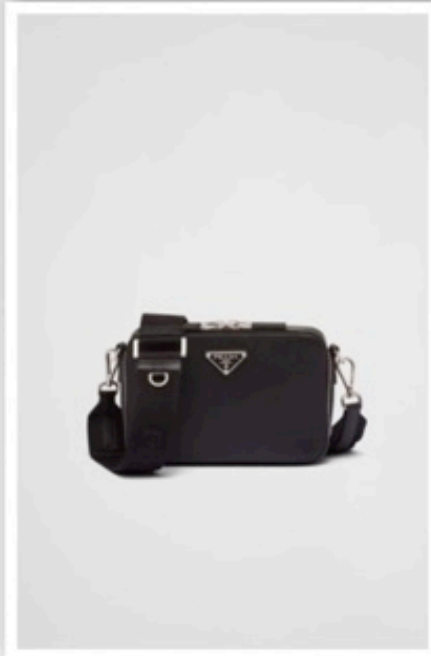
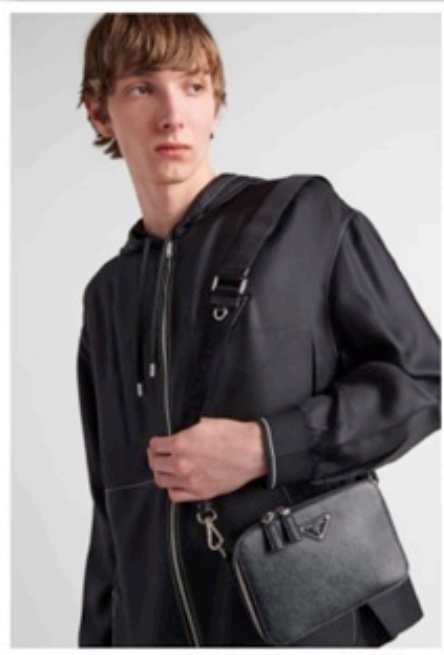
75,000

- Detachable adjustable woven nylon and leather shoulder strap
- Enameled metal triangle logo on the front
- Zipper closure
- Ring for attaching trick
- Interior with patch pocket
- Prada logo nylon lining
- Height: 12cm
- Width: 19cm
- Length: 5cm

Material

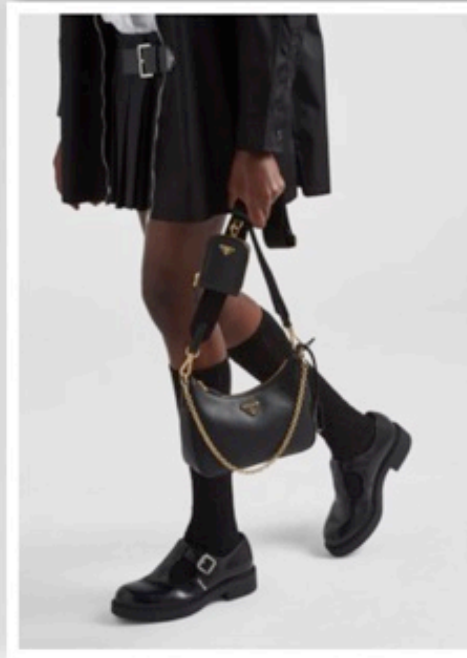
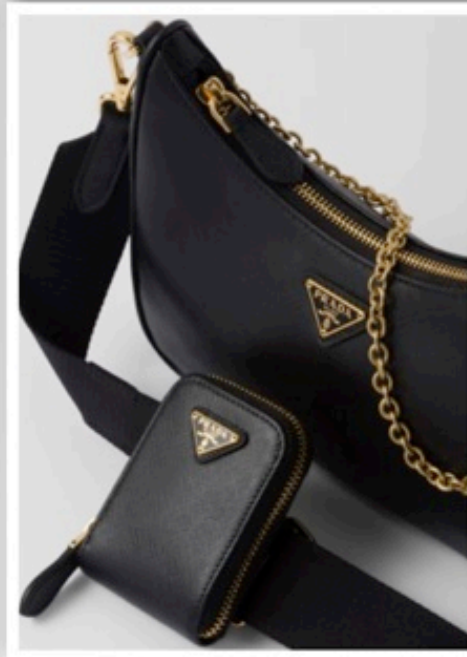
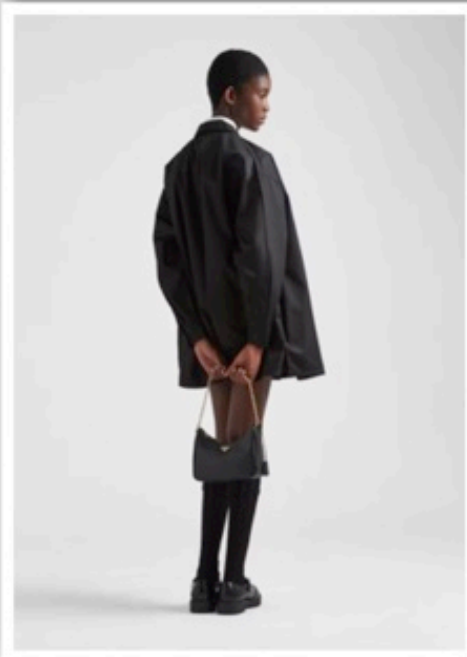
S

Leather



Small Saffiano leather Prada Brique bag BLK

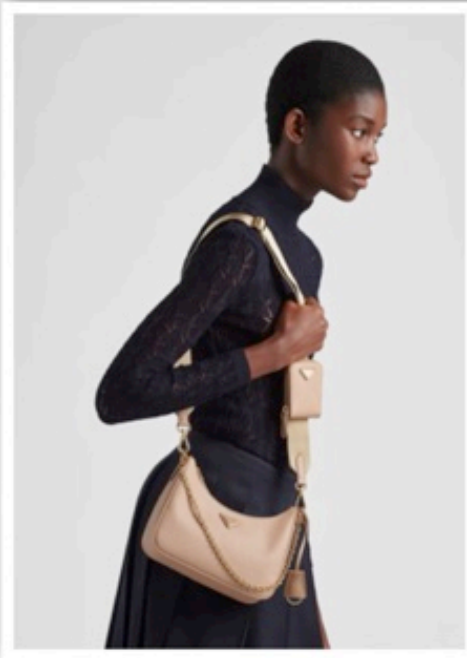
110,000



crafted with grained saffiano leather and features a zip closure leading to a spacious lined interior. while the detachable gold hardware chain handle is assisted by the 85 cm logo-print woven nylon shoulder strap so you can carry the bag by hand or across the body. The bag comes with detachable pouch with a zipped closure, while the bag enamel triangle logo completes the stylish look perfect for any occasion. H: 18cm x W: 22cm x D: 6cm

PRADA LUXURY RE-EDITION 2005 SAFFIANO BAG
BLK

114,000



crafted with grained saffiano leather and features a zip closure leading to a spacious lined interior. while the detachable gold hardware chain handle is assisted by the 85 cm logo-print woven nylon shoulder strap so you can carry the bag by hand or across the body. The bag comes with detachable pouch with a zipped closure, while the bag enamel triangle logo completes the stylish look perfect for any occasion. H: 18cm x W: 22cm x D: 6cm

PRADA LUXURY RE-EDITION 2005 SAFFIANO BAG
BEIGE

114,000



regenerated nylon yarn produced from recycled, purified plastic trash collected in the ocean, fishing nets, and textile waste fibers. The accessory with a classic adjustable belt and side-release buckle is characterized by the roomy front zipper pocket and enameled triangle logo.

- Product code: 2VL034_2DMG_F0002_V_000
- Adjustable nylon tape belt with side-release buckle
- Enameled metal triangle logo on the front
- Zipper closure
- Re-Nylon lining
- Height: 12cm
- Width: 26cm

Re-Nylon and Saffiano leather belt bag

51,000

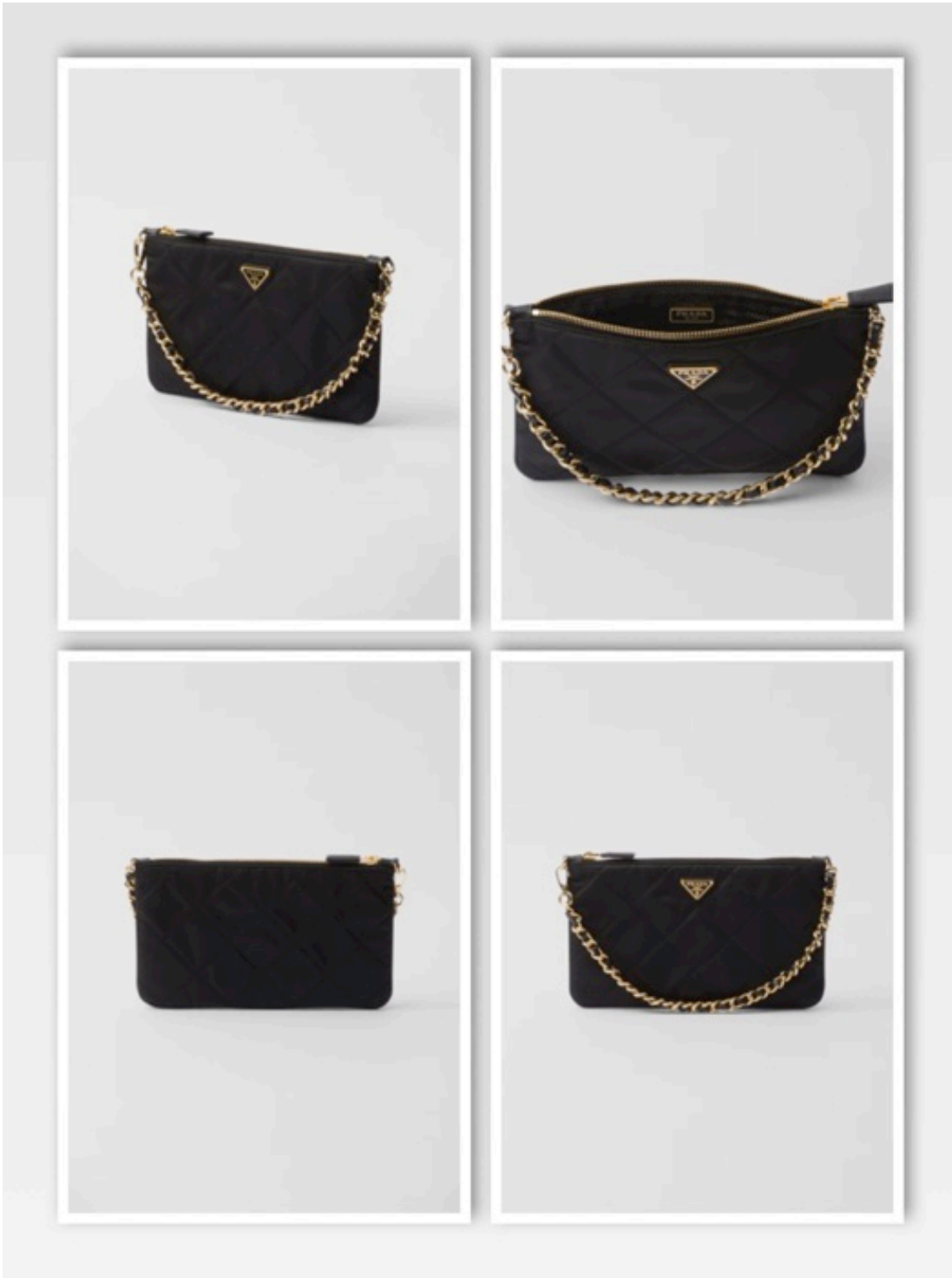


The structured Zip Around Mini Bag exudes the label's understated spirit, beautifully crafted in the finest Italian leather. An attention-grabbing piece- the silhouette boasts a classic top handle- in addition to a detachable and adjustable shoulder strap, providing you the ability to wear this design however you like. A zip fastening across the front pulls back to reveal a central compartment lined with luxuriant napa leather, card slots and a patch pocket, delivering you ample space for your on-the-go staples. Gold-toned hardware and discreet tonal topstitching complete the construction, bringing the elements together into a cohesive whole.

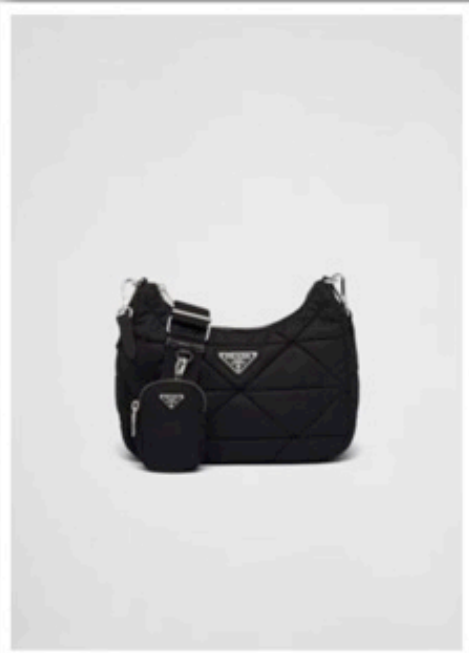
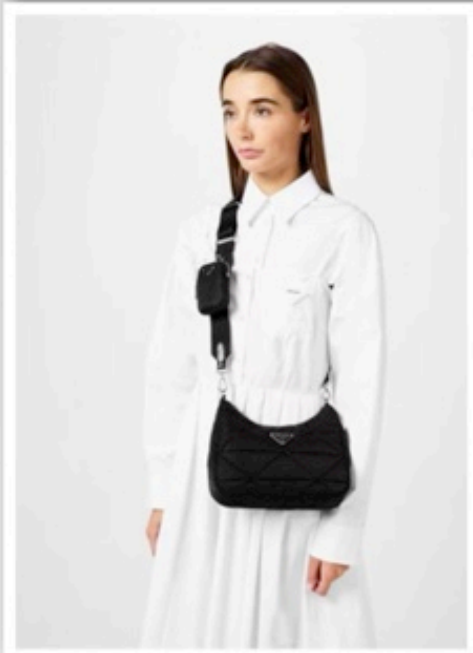
The solid base colouring assures an exceptional foundation to style this pair into any ensemble, making it an invaluable investment piece to add to your closet. And no Prada piece is complete without its signature logo proudly displayed on the front for instant luxury appreciation and high-end allure. Consider styling with the brand's Twill Clip Mini Dress and Brushed

PRADA ZIP AROUND MINI BAG
99,000

- Height: 14cm
- Width: 24cm



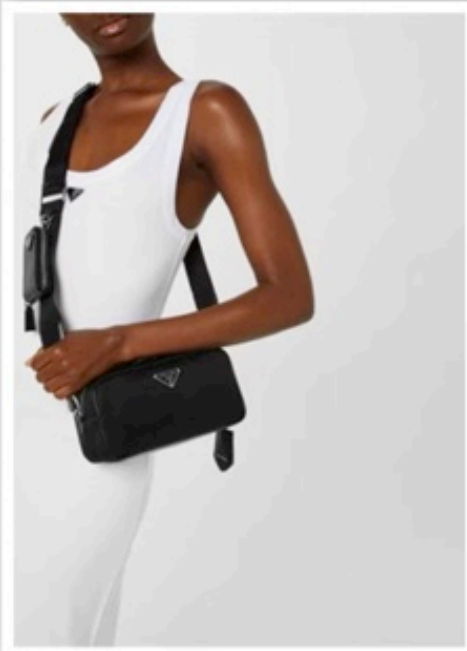
prada Re-Nylon pouch
61,000



- Padded triangle motif
- Adjustable 85 cm woven tape shoulder strap
- Detachable Re-Nylon zipper pouch
- Metal hardware
- Enameled metal triangle logo on the front
- Zipper closure
- Logo-print Re-Nylon lining with zipper pocket
- Height: 20cm
- Width: 24cm
- Length: 7cm

PRADA Padded Re-Nylon shoulder bag
110,000

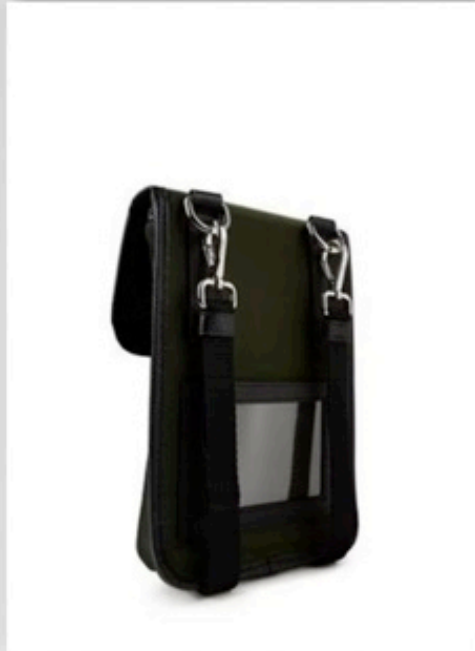
19 X 11 X 23CM



PRADA RE-NYLON CROSSBODY BAG

97,000

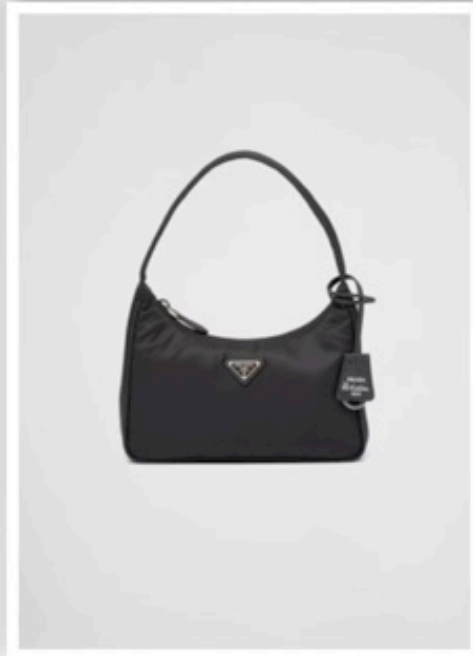
Dimensions: 8 x 12
centimetres.



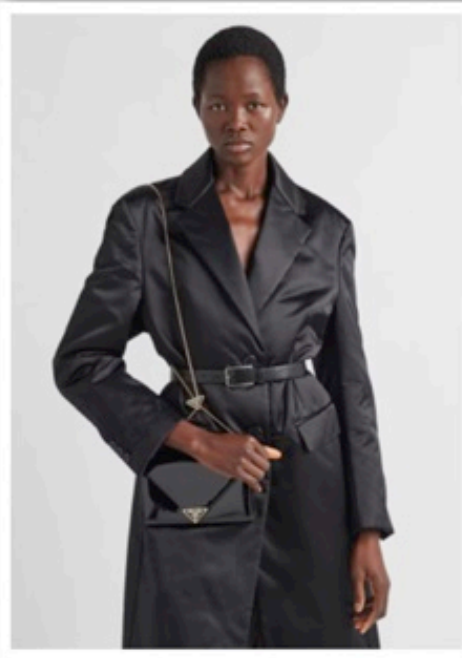
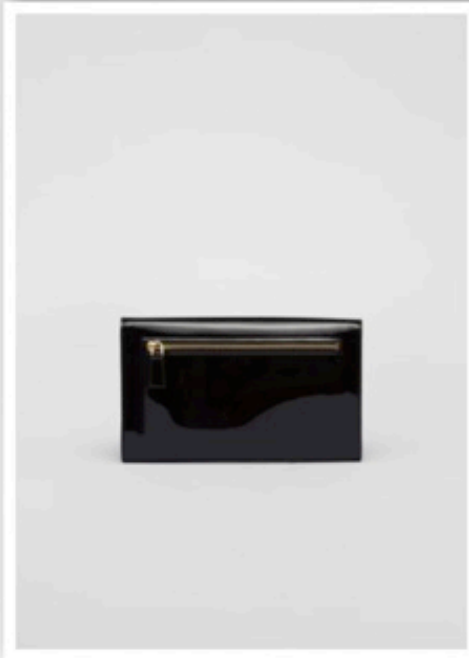
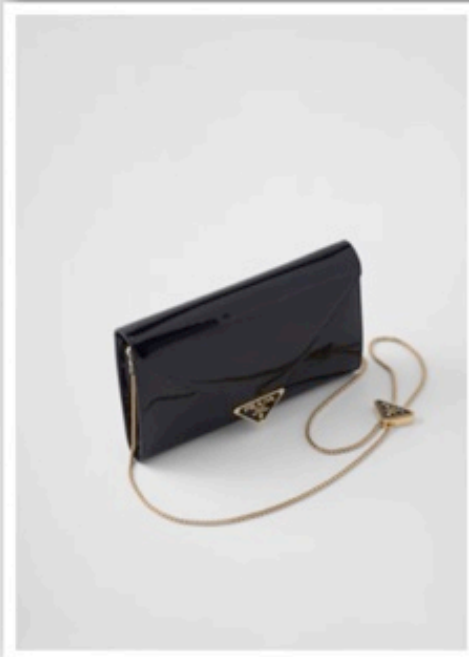
PRADA RE-NYLON AND SAFFIANO SMARTPHONE
CASE GREEN

53,000

H 17cm x W 22cm



Re-Nylon Prada Re-Edition 2000 mini-bag
59,000



- Detachable, adjustable chain shoulder strap, length: 115 cm
- Back zipper pocket
- Metal hardware
- Enameled metal triangle logo on the clasp
- Magnetic closure on the flap
- Nappa interior with patch pocket and card slots
- Height: 11cm
- Width: 20cm

PRADA Patent leather mini-bag

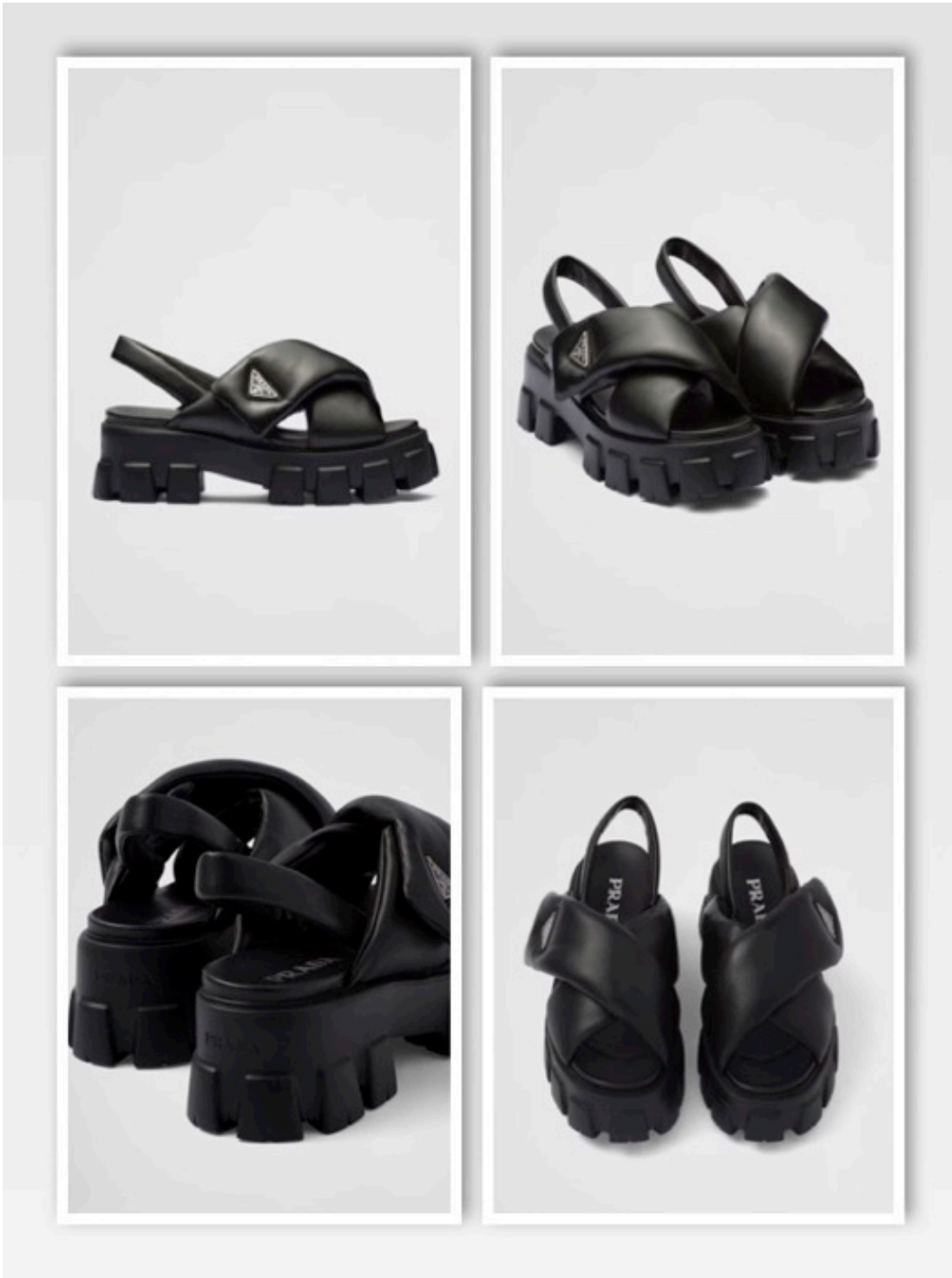
86,000

38.5 39 40



PRADA DOUBLE WHEEL SNEAKERS ALABASTRO
28,000

38 39 40



Monolith padded nappa leather sandals
49,500

36 38 39 40



PRADA STRAPPY FLAT SANDALS

47,000

36 37 38 39 40



PRADA STRAPPY FLAT SANDALS beige
47,000

37 38 39 40



PRADA Embellished leather ballet flats

48,000



PRADA LOGO D WHEEL SNEAKERS PINK

34,000



PRADA QUILTED LOGO SNEAKERS
36,000



PRADA LOGO LEATHER SNEAKERS

34,000



PRADA PLAIN LEATHER SNEAKERS (WHITE
BLACK, WHITE SILVER, BLACK)

29,000



PRADA LOGO CLASSIC SNEAKERS
37,000



PRADA SNEAKERS

34,000



PRADA QUILTED CLASSIC SNEAKERS
34,000



PRADA LOGO LEATHER MULES
36,000



PRADA COLLAPSIBLE HEEL SLIP ONS
29,000



PRADA LEATHER SLIP ONS
27,000

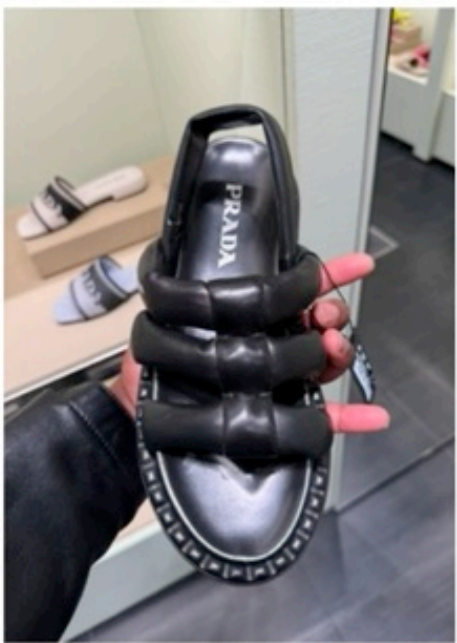


PRADA LOGO SAF SLIDES (NAVY GREEN)

34,000



PRADA NAPPA SLING BACKS
39,000



PRADA NAPPA SLINGS
41,000



PRADA PATENT SAF LOAFERS

38,000



PRADA METALLIC SLIDES
34,000



PRADA METALLIC KIT HEELS
38,000



PRADA LOGO LEATHER QUILTED MULES

34,000



PRADA CANV ESPADRILLES
29,900



PRADA QULTED ESPADRILLES WHITE
36,000



PRADA LOGO BLUE WHITE ESPADRILLES

34,000



PRADA LOGO MESH ESPADRILLES
34,000



PRADA EMB WEDGES

38,000



PRADA LOGO WEDGE SANDALS

39,000



PRADA LOGO CHUNKY SANDALS
36,000



PRADA LADIES CHUNKY TREKKERS
44,000



PRADA LEATHER BOW BALLET LATS
31,000



PRADA LOGO METTALIC LEATHER BALLET FLATS

31,000



PRADA LOGO TIPPED HEELED SANDALS (WHITE SILVER)

32,000



PRADA LOGO TIPPED HEELED SANDALS BLK

34,000



PRADA LOGO TIPPED MULES SILVER
38,000



PRADA LOGO HIGH TOPS BLK
39,000



PRADA LOGO HIGH TOPS WHITE LEATHER

42,000



Prada logo nylon chunky sole sneakers (BLACK WHITE)

33,000



PRADA LOGO NYLON SNAKERS BLK
36,000



PRADA LOGO RUBBER LEATHERS SANDALS
(WHITE PALE GREEN)

31,000



PRADA LOGO ST SLIDES (PINK BLUE WHITE)

33,000



PRADA LOGO BLOCK HEELS PATENT BLACK

39,000



PRADA LOGO PATENT LEATHER PUMPS (NUDE
BLK)
39,000



PRADA CHUNKY PLATFORM SANDALS (WHITE
BEIGE BLACK)

43,000



PRADA LOGO SNEAKERS WHITE BLUE MENS

30,000



PRADA DOWNTOWN SNEAKERS WHITE PURPLE
MENS
35,000



PRADA PLAIN TENNIS SHOES WHITE BLACK
MENS
32,000



PRADA TENNIS SHOES (BLACK TAB OR WHITE TAB) MENS

28,000



PRADA TECH NYLON SNEAKERS O(NAVY OR BLACK) MENS

28,000



PRADA LEATHER SNEAKERS BLACK MENS

27,000



PRADA LEATHER SNEAKERS WHITE WHITE
MENS
27,000



PRADA LEATHER SNEAKERS WHITE NVY MENS

25,000



PRADA CAMO NYLON SNEAKERS MENS
32,000



PRADA NAVY SNEAKERS MENS
32,000



PRADA CLASSIC LEATHER SNEAKER (WHITE OR NAVY) MENS

34,000



PRADA PRADA LEATHER SNEAKERS WHITE
BLACK MENS

32,000



PRADA PRADA LEATHER SNEAKERS BLK MENS
32,000



PRADA PRADA LEATHER SNEAKERS NAVY MENS
32,000



PRADA TECH SNEAKERS BLK MENS
32,000

37 38 39 40



PRADA Flat nappa leather sandals
59,000





PRADA SAFFIANO MULTI SLOT CARDHOLDER
BEIGE

21,000



PRADA COIN PURSE/CARDHOLDER LIGHT PINK

22,500