



ARNOLD Forest 2024

ARNOLD[®]
BE PART OF IT

Welcome to the world of ARNOLD Products, your ultimate destination for high-quality spare parts and accessories for garden machinery. With our rich history and expertise, we've become the top choice for homeowners who love taking care of their gardens and outdoor spaces.

Discover a vast selection of products tailored for every gardening enthusiast. Whether you have a lawn mower, chainsaw, hedge trimmer, or even a robot mower, we've got you covered. Our dedicated team ensures that every item we offer is of the highest quality, giving you peace of mind with every purchase.

Why choose ARNOLD Products? Not only do we boast a diverse range of garden essentials, but we also promise prompt delivery, outstanding customer service, and competitive prices. Our products are crafted to boost the efficiency of your garden tools and prolong their life, ensuring you get the most out of your equipment.

Thank you for choosing ARNOLD Products for all your garden machinery needs. We're here to ensure you have the best gardening experience, and we're excited to be a part of your outdoor adventures!



ARNOD forestry helmet combination AZ122, metal-mesh visor

6161-X1-0026



Forester helmet combination "ECO"

6161-X1-0001



ARNOLD face protection shield set AZ121, metal-mesh visor

6161-X1-0024



ARNOLD face protection shield AZ120, metal-mesh visor

6161-X1-0023



Capsule hearing protection Profi - 26 db

6061-X1-0006



ARNOLD hearing protection muffs AZ123, SNR 25

6161-X1-0025



ARNOLD soft foam hearing protection plugs AZ125

6161-X1-0028



ARNOLD safety glasses AZ124, clear lenses

6161-X1-0027



Cut protection gloves, size 9 / M

6061-CS-1009



Cut protection gloves, size 10 / L

6061-CS-1010



Cut protection gloves, size 11 / XL

6061-CS-1011



ARNOLD Starter-Kit for chain saws

9100-X1-0007



Sharpening kit in a roll, files 4 mm, 4.8 mm, 5.5 mm, flat file, depth limit gage, file handle, file gage

1194-X1-0030



File handle, red

1194-X1-0047



Round files, 4 mm, 3 pcs

1194-X1-0027



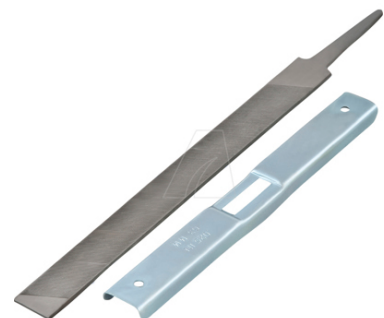
Round files, 4.8 mm, 3 pcs

1194-X1-0028



Round files, 5.5 mm, 3 pcs

1194-X1-0029



Depth limit gage with flat file

1094-X1-0034



2 cycle carburetor setting tool kit with 4 common types

6011-X1-0533



2-Cycle mixing bottle 1 L

6011-X1-0201



Double canister 3 + 1.5 L, includes spouts

6011-X2-7007



Fuel canister 3L, red, stackable

6011-X1-7006



Fuel canister 5L, red

6011-X1-7003



Fuel canister 10L, red

6011-X1-7004



Fuel canister 20L, red
6011-X1-7005



Fuel canister "RAPIDON 6", 6 L
6011-X1-0211



Metal canister, 5L, black
6011-X1-2000



Metal canister, 10L, black
6011-X1-2001



Metal canister, 20L, black
6011-X1-2002



Smart spout AZ97 for 5L and 10L metal fuel cans
6011-X1-2006



Metal spout for metal canister
6011-X1-2003



Universal security nozzle for chain oil canister, black/green
6011-X1-0537



Universal security nozzle for synthetic fuels, black/red
6111-X1-0536



Fuel stabilizer "EASY RUN", 250 ml
6012-X1-0045



2-cycle mixing oil API-TC, 100 ml
6012-X1-0036



2-cycle mixing oil API-TC, 250 ml
6012-X1-0037



2-cycle mixing oil API-TC, 1 Liter
6012-X1-0038



2-cycle mixing oil API-TC, 1 Liter measuring bottle
6012-X1-0039



Chainsaw mineral oil, 1 Liter
6012-X1-0041



Chainsaw mineral oil, 5 Liters canister
6012-X1-0042



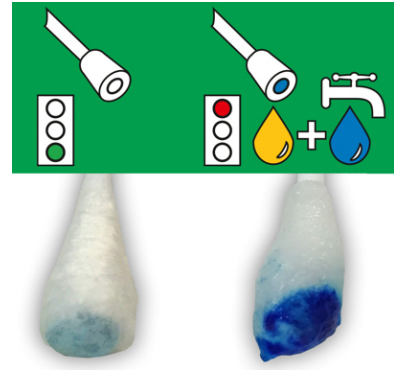
Organic chain oil, 1 Liter
6012-X1-0048



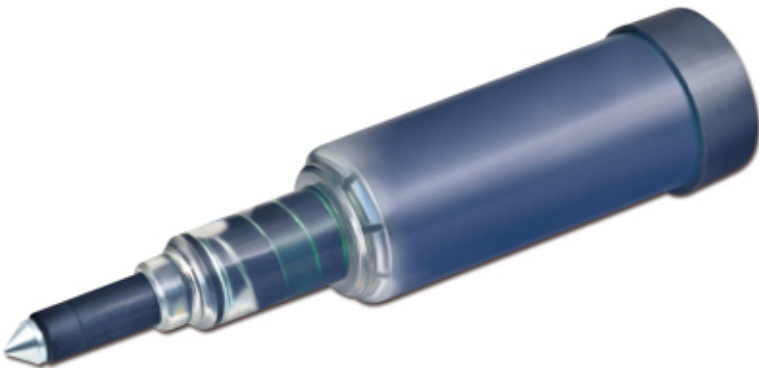
Organic chain oil, 5 Liter canister
6012-X1-0049



Fuel tester 2-in-1, 3 pcs. in bag
6011-KT-0003



2-in-1 fuel tester, 60 pcs. in a shop can
6011-KT-0060



Grease gun for sprocket noses
1194-X1-0036



Spark plug boot for 2-cycle engines, packed
3121-U1-0001



Spark socket wrench 10 mm x 16 mm x 88 mm
1194-X1-1016



Spark socket wrench 13 mm x 19 mm x 60 mm
1194-X1-1913



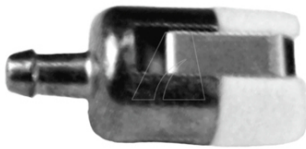
Spark socket wrench 17 mm x 21 mm x 70 mm

1194-X1-1721



4-in-1 spark plug wrench for 16, 18, 19, 21 mm spark plugs

6111-ZK-0001



Fuel filter, fits engines up to 33 cc

3011-W3-0002



Fuel line 8.7 x 6.4 mm - 610 mm

3091-U1-0035



Guide bar Mini 30 cm, 3/8" LP 1.3 mm (.050"), mount type 1041

1092-U1-0047



Guide bar Mini 35 cm, 3/8" LP 1.3 mm (.050"), mount type 1041

1092-U1-0050



Guide bar Mini 40 cm, 3/8" LP 1.3 mm (.050"), mount type 1041

1092-U1-0054



Guide bar Mini 45 cm, 3/8" LP 1.3 mm (.050"), mount type 11095

1092-M1-0027



Saw chain .325", 1.3 mm, 64 drive links, with safety drive link, semi-chisel

1191-X2-5064



Saw chain .325", 1.3 mm, 66 drive links, with safety drive link, semi-chisel

1191-X2-5066



Saw chain .325", 1.3 mm, 72 drive links, with safety drive link, semi-chisel

1191-X2-5072



Saw chain .325", 1.5 mm, 56 drive links, with safety drive link, semi-chisel

1191-X2-5856



Saw chain .325", 1.5 mm, 64 drive links, with safety drive link, semi-chisel

1191-X2-5864

Saw chain .325", 1.5 mm, 65 drive links, with safety drive link, semi-chisel

1191-X2-5865



Saw chain .325", 1.5 mm, 66 drive links, with safety drive link, semi-chisel

1191-X2-5866



Saw chain .325", 1.5 mm, 72 drive links, with safety drive link, semi-chisel

1191-X2-5872



Saw chain .325", 1.5 mm, 73 drive links, with safety drive link, semi-chisel

1191-X2-5873



Saw chain .325", 1.5 mm, 78 drive links, without safety drive link, full chisel

1091-P7-5878



Saw chain .325", 1.6 mm, 56 drive links, with safety drive link, semi-chisel

1191-X2-6356

Saw chain .325", 1.6 mm, 62 drive links, with safety drive link, semi-chisel

1191-X2-6362



Saw chain 3/8" LP, 1.1 mm, 33TG, with safety drive link, semi-chisel

1191-X1-4333

Saw chain 3/8" LP, 1.1 mm, 34TG, with safety drive link, semi-chisel

1191-X1-4334



Saw chain 3/8" LP, 1.1 mm, 44TG, with safety drive link, semi-chisel

1191-X1-0001



Saw chain 3/8" LP, 1.1 mm, 45TG, with safety drive link, semi-chisel

1191-X1-0002



Saw chain 3/8" LP, 1.1 mm, 46TG, with safety drive link, semi-chisel

1191-X1-0003

Saw chain 3/8" LP, 1.1 mm, 50TG, with safety drive link, semi-chisel

1191-X1-0005



Saw chain 3/8" LP, 1.1 mm, 52TG, with safety drive link, semi-chisel

1191-X1-0004



Saw chain 3/8" LP, 1.1 mm, 55TG, with safety drive link, semi-chisel

1191-X1-0006



Saw chain 3/8" LP, 1.1 mm, 56TG, with safety drive link, semi-chisel

1191-X1-0007



Saw chain 3/8" LP, 1.1 mm, 57TG, with safety drive link, semi-chisel

1191-X1-4357



Saw chain 3/8" LP, 1.3 mm, 33TG, with safety drive link, semi-chisel

1191-X1-5033

Saw chain 3/8" LP, 1.3 mm, 40TG, with safety drive link, semi-chisel

1191-X1-5040



Saw chain 3/8" LP, 1.3 mm, 44TG, with safety drive link, semi-chisel

1191-X1-0010

Saw chain 3/8" LP, 1.3 mm, 45TG, with safety drive link, semi-chisel

1191-X1-0009



Saw chain 3/8" LP, 1.3 mm, 46TG, with safety drive link, semi-chisel

1191-X1-0011

Saw chain 3/8" LP, 1.3 mm, 49TG, with safety drive link, semi-chisel

1191-X1-5049



Saw chain 3/8" LP, 1.3 mm, 50TG, with safety drive link, semi-chisel

1191-X1-0013

Saw chain 3/8" LP, 1.3 mm, 52TG, with safety drive link, semi-chisel

1191-X1-0014



Saw chain 3/8" LP, 1.3 mm, 53TG, with safety drive link, semi-chisel

1191-X1-0015

Saw chain 3/8" LP, 1.3 mm, 54TG, with safety drive link, semi-chisel

1191-X1-5054



Saw chain 3/8" LP, 1.3 mm, 55TG, with safety drive link, semi-chisel

1191-X1-0017

Saw chain 3/8" LP, 1.3 mm, 56TG, with safety drive link, semi-chisel

1191-X1-0016



Saw chain 3/8" LP, 1.3 mm, 57TG, with safety drive link, semi-chisel

1191-X1-0018

Saw chain 3/8" LP, 1.3 mm, 58TG, with safety drive link, semi-chisel

1191-X1-0019



Saw chain 3/8" LP, 1.3 mm, 59TG, with safety drive link, semi-chisel

1191-X1-5059



Saw chain 3/8" LP, 1.3 mm, 60TG, with safety drive link, semi-chisel

1191-X1-5060



Saw chain 3/8" LP, 1.3 mm, 61TG, with safety drive link, semi-chisel

1191-X1-5061



Saw chain 3/8" LP, 1.3 mm, 62TG, with safety drive link, semi-chisel

1191-X1-0020



Saw chain 3/8" LP, 1.3 mm, 63TG, with safety drive link, semi-chisel

1191-X1-5063

Saw chain 3/8", 1.5 mm, 56 drive links, with safety drive link, semi-chisel

1191-X3-5856



Saw chain 3/8", 1.5 mm, 60 drive links, with safety drive link, semi-chisel

1191-X3-5860

Saw chain 3/8", 1.5 mm, 64 drive links, with safety drive link, semi-chisel

1191-X3-5864



Saw chain 3/8", 1.6 mm, 56 drive links, with safety drive link, semi-chisel

1191-X3-6356

Saw chain 3/8", 1.6 mm, 60 drive links, with safety drive link, semi-chisel

1191-X3-6360